

Product datasheet

Recombinant human IL-15 protein (Active) ab259403

[1 References](#) [5 Images](#)

Description

Product name	Recombinant human IL-15 protein (Active)	
Biological activity	Fully biologically active determined by the dose dependent proliferation of KHYG-1 cells. ED ₅₀ is ≤1.28 ng/mL, corresponding to a specific activity of 7.8 x 10 ⁵ units/mg.	
Purity	≥ 95 % SDS-PAGE. ≥ 95 % HPLC.	
Endotoxin level	< 0.005 Eu/μg	
Expression system	HEK 293 cells	
Accession	<u>P40933</u>	
Protein length	Full length protein	
Animal free	Yes	
Carrier free	Yes	
Nature	Recombinant	
Species	Human	
Sequence	NWNVISDLKKIEDLIQSMHIDATLYTESDVHPSCKV TAMK CFLLELQVI SLESGDASIHDTVENL IILANNSLSSNGNVTESGCKECEEEL EEKNIKEFL QSFVHIVQMFINTS	
Predicted molecular weight	13 kDa	
Molecular weight information	NWNVISDLKKIEDLIQSMHIDATLYTESDVHPSCKV TAMK CFLLELQVISLESGDASIHDTVENL IILANNSLSSNGNVTESGCKECEEEL EEKNIKEFL QSFVHIVQMFINTS	
Amino acids	49 to 162	
Additional sequence information	N-terminal glycine. Mature chain lacking the signal and propeptides.	

Specifications

Our **Abpromise guarantee** covers the use of **ab259403** in the following tested applications.

The application notes include recommended starting dilutions; optimal dilutions/concentrations should be determined by the end user.

Applications	Sandwich ELISA
	HPLC
	Mass Spectrometry

SDS-PAGE
Cell Culture
Functional Studies

Form Lyophilized

Additional notes This protein is filter sterilised prior to aliquoting and lyophilisation. All aliquoting and lyophilisation steps are performed in a sterile environment

Preparation and Storage

Stability and Storage Shipped at Room Temperature. Store at Room Temperature.

pH: 6.00

Constituents: 0.727% Dibasic monohydrogen potassium phosphate, 0.248% Monobasic dihydrogen potassium phosphate, 10.26% Trehalose

Buffer lyophilized from.

This product is an active protein and may elicit a biological response in vivo, handle with caution.

Reconstitution Reconstitute with Phosphate Buffered saline. Reconstituted protein stable at -80C for 12 months or 4C for 1 week. Lyophilized contents may appear as either a translucent film or a white powder. This variance does not affect the quality of the product.

General Info

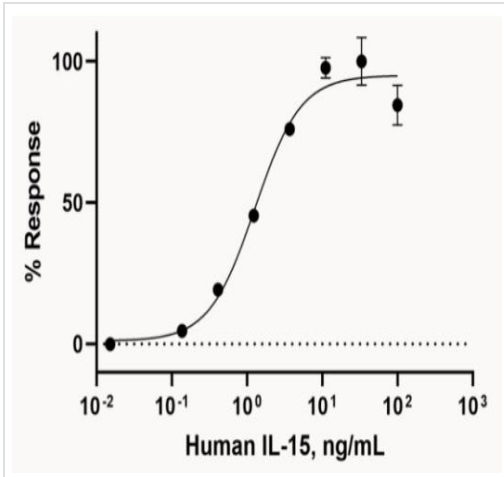
Function Cytokine that stimulates the proliferation of T-lymphocytes. Stimulation by IL-15 requires interaction of IL-15 with components of IL-2R, including IL-2R beta and probably IL-2R gamma but not IL-2R alpha.

Tissue specificity Most abundant in placenta and skeletal muscle. It is also detected in the heart, lung, liver and kidney. IL15-S21AA is preferentially expressed in tissues such as testis and thymus.

Sequence similarities Belongs to the IL-15/IL-21 family.

Cellular localization Secreted and Cytoplasm. Nucleus. IL15-S21AA is not secreted, but rather is stored intracellularly, appearing in the nucleus and cytoplasmic components.

Images



Functional Studies - Recombinant human IL-15 protein (Active) (ab259403)

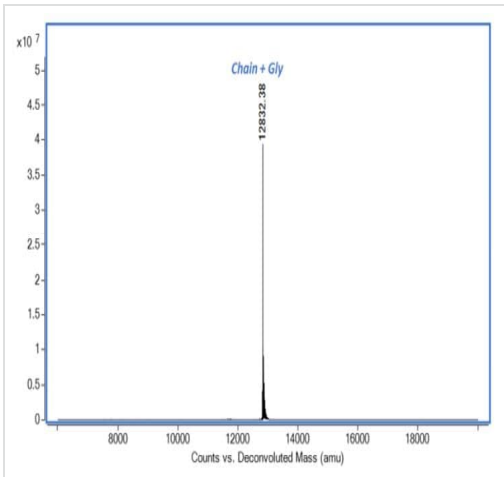
Functional analysis of ab259403.

Fully biologically active determined by the dose dependent proliferation of KHYG-1 cells.

ED₅₀ is ≤1.28 ng/mL, corresponding to a specific activity of 7.8 x 10⁵ units/mg.

Cell based assay testing is performed on the first lot of protein only and is provided as a reference for protein activity; subsequent lots of protein must pass all biophysical quality control parameters that meet the same parameters as the first lot.

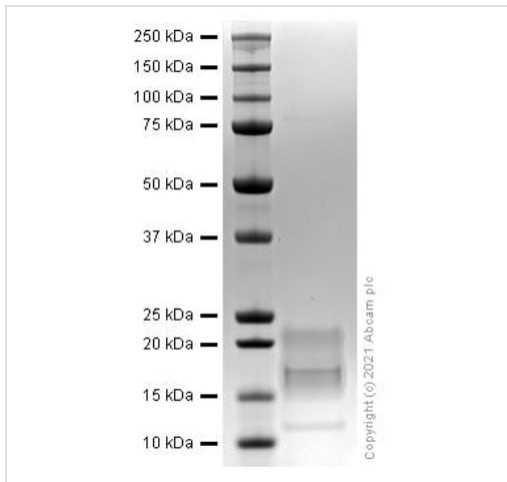
Lot: GR3379485-1



Mass Spectrometry - Recombinant human IL-15 protein (Active) (ab259403)

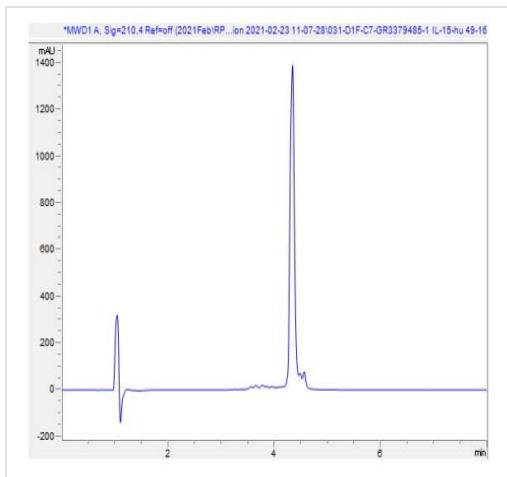
Mass determination by ESI-TOF.

Predicted MW is 12830.92 Da (+/- 10 Da by ESI-TOF). Observed MW is 12832.38 Da.



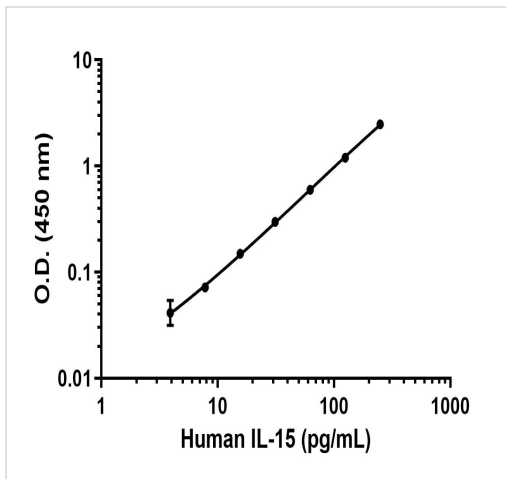
SDS-PAGE analysis of ab259403.

SDS-PAGE - Recombinant human IL-15 protein
(Active) (ab259403)



HPLC analysis of ab259403.

HPLC - Recombinant human IL-15 protein (Active)
(ab259403)



Sandwich ELISA - Recombinant human IL-15 protein (Active) (ab259403)

Background subtracted standard curve using Human IL-15 Antibody Pair - BSA and Azide free (**ab241883**) and Recombinant human IL-15 protein (Active) (ab259403) in sandwich ELISA.

The ELISA was performed using the components of the corresponding SimpleStep® kit, which uses the same antibody pair with a different formulation and format.

Please note: All products are "FOR RESEARCH USE ONLY. NOT FOR USE IN DIAGNOSTIC PROCEDURES"

Our Abpromise to you: Quality guaranteed and expert technical support

- Replacement or refund for products not performing as stated on the datasheet
- Valid for 12 months from date of delivery
- Response to your inquiry within 24 hours
- We provide support in Chinese, English, French, German, Japanese and Spanish
- Extensive multi-media technical resources to help you
- We investigate all quality concerns to ensure our products perform to the highest standards

If the product does not perform as described on this datasheet, we will offer a refund or replacement. For full details of the Abpromise, please visit <https://www.abcam.com/abpromise> or contact our technical team.

Terms and conditions

- Guarantee only valid for products bought direct from Abcam or one of our authorized distributors