

Product datasheet

Recombinant human IL-2 protein (Animal Free) ab179500

[2 Images](#)

Description

Product name	Recombinant human IL-2 protein (Animal Free)
Biological activity	The activity is measured by the dose-dependent proliferation of CTLL-2 cells and is typically less than 1 ng/mL.
Purity	> 90 % SDS-PAGE. The purity of ab179500 was determined by reducing and non-reducing SDS-PAGE.
Endotoxin level	<=1.000 Eu/μg
Expression system	Escherichia coli
Accession	<u>P60568</u>
Protein length	Full length protein
Animal free	Yes
Nature	Recombinant
Species	Human
Sequence	MAPTSSSTKK TQLQLEHLLL DLQMILNGIN NYKNPKLTRM LTFKFYMPKK ATELKHLQCL EEELKPLEEV LNLAQSKNFH LRPRDLISNI NVMLELKGS ETTFMCEYAD ETATMEFLN RWITFSQSII STLT
Predicted molecular weight	16 kDa
Amino acids	21 to 153
Additional sequence information	Sequence corresponds to the chain, preceeded by a start codon (M).

Specifications

Our **Abpromise guarantee** covers the use of **ab179500** in the following tested applications.

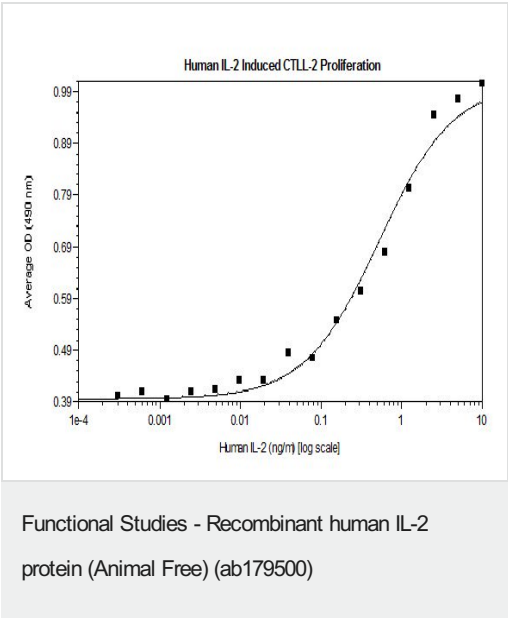
The application notes include recommended starting dilutions; optimal dilutions/concentrations should be determined by the end user.

Applications	Functional Studies SDS-PAGE
Form	Lyophilized

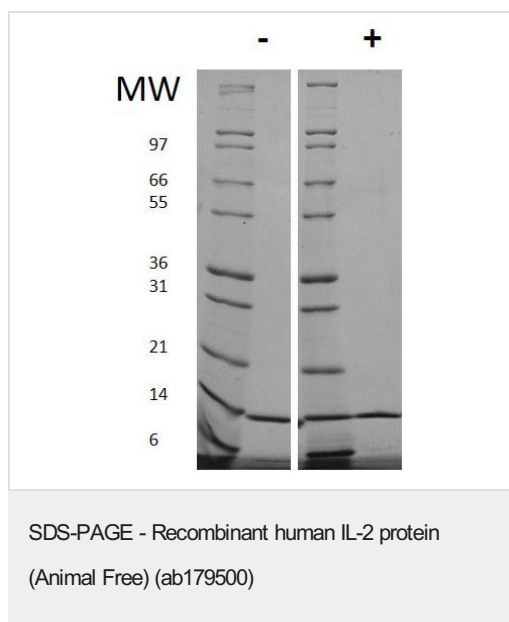
Preparation and Storage

Stability and Storage	<p>Shipped at 4°C. Upon delivery aliquot. Store at -20°C. For long term storage it is recommended to add a carrier protein on reconstitution (0.1% HSA or BSA).</p> <p>Constituent: 0.26% Sodium citrate</p> <p>This product is an active protein and may elicit a biological response in vivo, handle with caution.</p>
Reconstitution	<p>Centrifuge vial before opening. When reconstituting the product, gently pipet and wash down the sides of the vial to ensure full recovery of the protein into solution. It is recommended to reconstitute the lyophilized product with 10 mM HCl at a concentration of 0.1 mg/mL, which can be further diluted into other aqueous solutions. Wait several minutes for full reconstitution and solubility</p>
General Info	
Function	<p>Produced by T-cells in response to antigenic or mitogenic stimulation, this protein is required for T-cell proliferation and other activities crucial to regulation of the immune response. Can stimulate B-cells, monocytes, lymphokine-activated killer cells, natural killer cells, and glioma cells.</p>
Involvement in disease	<p>Note=A chromosomal aberration involving IL2 is found in a form of T-cell acute lymphoblastic leukemia (T-ALL). Translocation t(4;16)(q26;p13) with involves TNFRSF17.</p>
Sequence similarities	<p>Belongs to the IL-2 family.</p>
Cellular localization	<p>Secreted.</p>

Images



Functional analysis of ab179500



SDS PAGE analysis of ab179500 under non-reducing (-) and reducing (+) conditions. Stained with Coomassie Blue.

Please note: All products are "FOR RESEARCH USE ONLY. NOT FOR USE IN DIAGNOSTIC PROCEDURES"

Our Abpromise to you: Quality guaranteed and expert technical support

- Replacement or refund for products not performing as stated on the datasheet
- Valid for 12 months from date of delivery
- Response to your inquiry within 24 hours
- We provide support in Chinese, English, French, German, Japanese and Spanish
- Extensive multi-media technical resources to help you
- We investigate all quality concerns to ensure our products perform to the highest standards

If the product does not perform as described on this datasheet, we will offer a refund or replacement. For full details of the Abpromise, please visit <https://www.abcam.com/abpromise> or contact our technical team.

Terms and conditions

- Guarantee only valid for products bought direct from Abcam or one of our authorized distributors