

Product datasheet

Recombinant human IL-25 protein (Active) ab256045

1 Image

Description

Product name	Recombinant human IL-25 protein (Active)		
Biological activity	IL-8 production in human PBMCs.		
Purity	> 95 % SDS-PAGE.		
Endotoxin level	<=1.000 Eu/µg		
Expression system	Escherichia coli		
Accession	<u>Q9H293</u>		
Protein length	Full length protein		
Animal free	No		
Nature	Recombinant		
Species	Human		
Sequence	MYSHWPSCCPSKGQDTSEELLRWSTVPVPPLEPARPNR HPESCRASEDGP LNSRAISPWRYELDRDLNRLPQDLYHARCLCPHCVSLQTG SHMDPRGNSE LLYHNQTVFYRRPCHGEKGTHKGYCLERRLYRVSLACVCV RPRVMG		
Predicted molecular weight	17 kDa		
Amino acids	33 to 177		
Additional sequence information	Full-length mature chain lacking the signal peptide.		

Specifications

Our <u>Abpromise guarantee</u> covers the use of ab256045 in the following tested applications.	
The application notes include recommended starting dilutions; optimal dilutions/concentrations should be determined by the end user.	
Applications	SDS-PAGE Functional Studies
Form	Lyophilized

Preparation and Storage

Stability and Storage

Shipped at room temperature. Store at -20°C.

Constituent: 0.1% Trifluoroacetic acid

0.2 micron filtered

This product is an active protein and may elicit a biological response in vivo, handle with caution.

Reconstitution

Reconstitute in sterile 10mM HCl at 0.1 mg/ml. Centrifuge vial before opening. Suspend the product by gently pipetting the above recommended solution down the sides of the vial. DO NOT VORTEX. Allow several minutes for complete reconstitution. For prolonged storage, dilute to working aliquots in a 0.1% BSA solution, store at -80°C and avoid repeat freeze thaws.

General Info

Function

Induces activation of NF-kappa-B and stimulates production of the proinflammatory chemokine IL-8. Proinflammatory cytokine favoring Th2-type immune responses.

Tissue specificity

Expressed at low levels in several tissues, including brain, kidney, lung, prostate, testis, spinal cord, adrenal gland, and trachea.

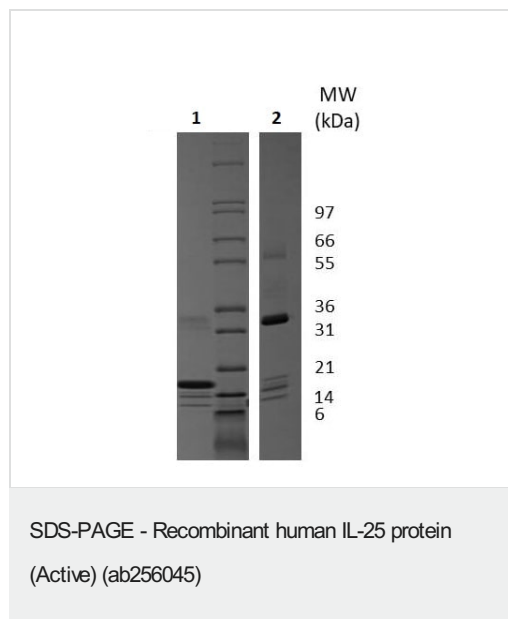
Sequence similarities

Belongs to the IL-17 family.

Cellular localization

Secreted.

Images



SDS-PAGE analysis of 1µg ab256045 under reducing (Lane 1) and non-reducing (Lane 2) conditions. ab256045 is a homodimer with a predicted MW of 33.7 kDa (monomer MW is 16.9 kDa).

4-20% Tris-Glycine gel. Coomassie Blue staining.

Please note: All products are "FOR RESEARCH USE ONLY. NOT FOR USE IN DIAGNOSTIC PROCEDURES"

Our Abpromise to you: Quality guaranteed and expert technical support

- Replacement or refund for products not performing as stated on the datasheet
- Valid for 12 months from date of delivery

- Response to your inquiry within 24 hours
- We provide support in Chinese, English, French, German, Japanese and Spanish
- Extensive multi-media technical resources to help you
- We investigate all quality concerns to ensure our products perform to the highest standards

If the product does not perform as described on this datasheet, we will offer a refund or replacement. For full details of the Abpromise, please visit <https://www.abcam.com/abpromise> or contact our technical team.

Terms and conditions

- Guarantee only valid for products bought direct from Abcam or one of our authorized distributors