

## Product datasheet

# Recombinant Human IL-26 protein (Tagged) ab239573

[1 Image](#)

### Description

<b>Product name</b>	Recombinant Human IL-26 protein (Tagged)
<b>Purity</b>	> 85 % SDS-PAGE.
<b>Expression system</b>	Escherichia coli
<b>Accession</b>	<b><u>Q9NPH9</u></b>
<b>Protein length</b>	Full length protein
<b>Animal free</b>	No
<b>Nature</b>	Recombinant
<b>Species</b>	Human
<b>Sequence</b>	KHKQSSFTKSCYPRGTLTQAVDALYKAAWLKATIPEDRIK NIRLLKKKT KKQFMKNCQFQEQLLSFFMEDVFGQLQLQGCKKIRFVED FHSLRQKLSHC ISCASSAREMKSIITRMKRIFYRIGNKGYKAISELDILLSWIKK LLESSQ
<b>Predicted molecular weight</b>	32 kDa including tags
<b>Amino acids</b>	22 to 171
<b>Tags</b>	His tag N-Terminus
<b>Additional sequence information</b>	This product is the mature full length protein from aa 22 to 171. The signal peptide is not included. N-terminal 6xHis-B2M-tag.

### Specifications

Our **Abpromise guarantee** covers the use of **ab239573** in the following tested applications.

The application notes include recommended starting dilutions; optimal dilutions/concentrations should be determined by the end user.

**Applications** SDS-PAGE

**Form** Liquid

### Preparation and Storage

**Stability and Storage** Shipped at 4°C. Store at -20°C or -80°C. Avoid freeze / thaw cycle.

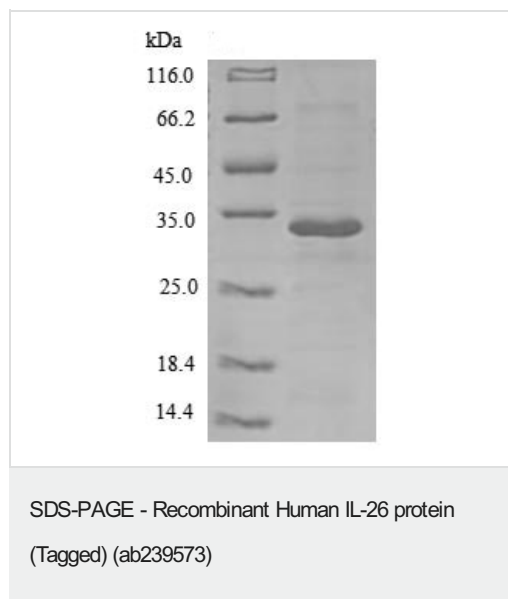
pH: 7.2

Constituents: Tris buffer, 50% Glycerol (glycerin, glycerine)

## General Info

<b>Function</b>	May play a role in local mechanisms of mucosal immunity and seems to have a proinflammatory function. May play a role in inflammatory bowel disease. Activates STAT1 and STAT3, MAPK1/3 (ERK1/2), JUN and AKT. Induces expression of SOCS3, TNF-alpha and IL-8, secretion of IL-8 and IL-10 and surface expression of ICAM1. Decreases proliferation of intestinal epithelial cells. Is inhibited by heparin.
<b>Tissue specificity</b>	Expressed in HVS transformed T-cells but not other T-cell lines or primary stimulated T-cells. Expressed in colonic T cells including Th17 inflammatory T cells; the expression is significantly increased in serum of patients with Crohn's disease (at protein level).
<b>Sequence similarities</b>	Belongs to the IL-10 family.
<b>Cellular localization</b>	Secreted.

## Images



(Tris-Glycine gel) Discontinuous SDS-PAGE (reduced) analysis with 5% enrichment gel and 15% separation gel of ab239573.

**Please note:** All products are "FOR RESEARCH USE ONLY. NOT FOR USE IN DIAGNOSTIC PROCEDURES"

## Our Abpromise to you: Quality guaranteed and expert technical support

- Replacement or refund for products not performing as stated on the datasheet
- Valid for 12 months from date of delivery
- Response to your inquiry within 24 hours
- We provide support in Chinese, English, French, German, Japanese and Spanish
- Extensive multi-media technical resources to help you
- We investigate all quality concerns to ensure our products perform to the highest standards

If the product does not perform as described on this datasheet, we will offer a refund or replacement. For full details of the Abpromise, please visit <https://www.abcam.com/abpromise> or contact our technical team.

#### **Terms and conditions**

---

- Guarantee only valid for products bought direct from Abcam or one of our authorized distributors