

Product datasheet

Recombinant Human IMMP2L protein ab183255

1 Image

Description

Product name	Recombinant Human IMMP2L protein
Purity	> 95 % SDS-PAGE. ab183255 was purified using conventional chromatography techniques.
Expression system	Escherichia coli
Accession	<u>Q96T52</u>
Protein length	Protein fragment
Animal free	No
Nature	Recombinant
Species	Human
Sequence	MGSSHHHHHH SSGLVPRGSH MGSRVEGASM QPSLNPGGSQ SSDVLLNHW KVRNFEVHRG DIVSLVSPKN PEQKIKRVI ALEGDIVRTI GHKNRYVKVP RGHIWVEGDH HGHSFDSNSF GPVSLGLLHA HATHILWPPE RWQKLESVLP PERLPVQREE E
Predicted molecular weight	18 kDa including tags
Amino acids	38 to 175
Tags	His tag N-Terminus

Specifications

Our **Abpromise guarantee** covers the use of **ab183255** in the following tested applications.

The application notes include recommended starting dilutions; optimal dilutions/concentrations should be determined by the end user.

Applications	Mass Spectrometry SDS-PAGE
Mass spectrometry	MALDI-TOF
Form	Liquid

Preparation and Storage

Stability and Storage	Shipped at 4°C. Store at +4°C short term (1-2 weeks). Upon delivery aliquot. Store at -20°C or -80°C. Avoid freeze / thaw cycle.
------------------------------	--

pH: 8.00

Constituents: 0.32% Tris HCl, 0.88% Sodium chloride, 50% Glycerol (glycerin, glycerine), 0.02% DTT

General Info

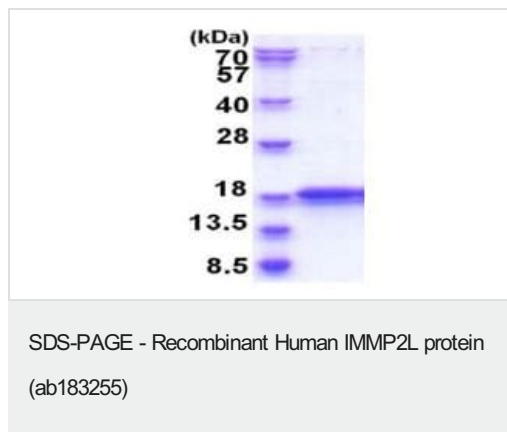
Relevance

The mitochondrial inner membrane peptidase (IMP) complex generates mature, active proteins in the mitochondrial intermembrane space by proteolytically removing the mitochondrial targeting presequence of nuclear-encoded proteins. IMMPL1 and IMMPL2 are the catalytic subunits of the IMP complex.

Cellular localization

Mitochondrion inner membrane; Single pass membrane protein.

Images



15% SDS PAGE analysis of ab183255 (3µg).

Please note: All products are "FOR RESEARCH USE ONLY. NOT FOR USE IN DIAGNOSTIC PROCEDURES"

Our Abpromise to you: Quality guaranteed and expert technical support

- Replacement or refund for products not performing as stated on the datasheet
- Valid for 12 months from date of delivery
- Response to your inquiry within 24 hours
- We provide support in Chinese, English, French, German, Japanese and Spanish
- Extensive multi-media technical resources to help you
- We investigate all quality concerns to ensure our products perform to the highest standards

If the product does not perform as described on this datasheet, we will offer a refund or replacement. For full details of the Abpromise, please visit <https://www.abcam.com/abpromise> or contact our technical team.

Terms and conditions

- Guarantee only valid for products bought direct from Abcam or one of our authorized distributors