

## Product datasheet

# Recombinant Human Indoleamine 2, 3-dioxygenase protein ab181930

[1 Image](#)

### Description

---

<b>Product name</b>	Recombinant Human Indoleamine 2, 3-dioxygenase protein
<b>Purity</b>	> 90 % SDS-PAGE. ab181930 was purified using conventional chromatography techniques.
<b>Expression system</b>	Escherichia coli
<b>Accession</b>	<b><u>P14902</u></b>
<b>Protein length</b>	Full length protein
<b>Animal free</b>	No
<b>Nature</b>	Recombinant
<b>Species</b>	Human
<b>Sequence</b>	MGSSHHHHHSSGLVPRGSHMGSMAMHENSMTISKEY HIDEEVGFALPN PQENLPDFYNDWMFIAKHLPLDIESGQLRERVEKLNMLSI DHLTDHKSQR LARLVLGCIITMAYVWGKGHGDVRKVLPRNIAVPYCQLSKK LELPILVYA DCVLANWKKKDPNKPLTYENMDVLFSDGDCSKGFFL VSLLEIAAASA IKVIPTVFKAMQMQRDITLLKALLEIASCLEKALQVFHQIHD HVNPKAFF SVLRMLSGWKGNPQLSDGLVYEGFWEDPKEFAGGSAG QSSVFQCFDVL GIQQTAGGGHAAQFLQDMRRYMPPAHRNFLCSLESNPSV REFVLSKGDAG LREAYDACVKALVSLRSYHLQIVTKYLIPASQQPKENKTSE DPSKLEAK GTGGTDLMNFLKTVRSTTEKSLLEK
<b>Predicted molecular weight</b>	48 kDa including tags
<b>Amino acids</b>	1 to 403
<b>Tags</b>	His tag N-Terminus
<b>Additional sequence information</b>	NP_002155

### Specifications

Our **Abpromise guarantee** covers the use of **ab181930** in the following tested applications.

The application notes include recommended starting dilutions; optimal dilutions/concentrations should be determined by the end user.

<b>Applications</b>	Mass Spectrometry SDS-PAGE
<b>Mass spectrometry</b>	MALDI-TOF
<b>Form</b>	Liquid

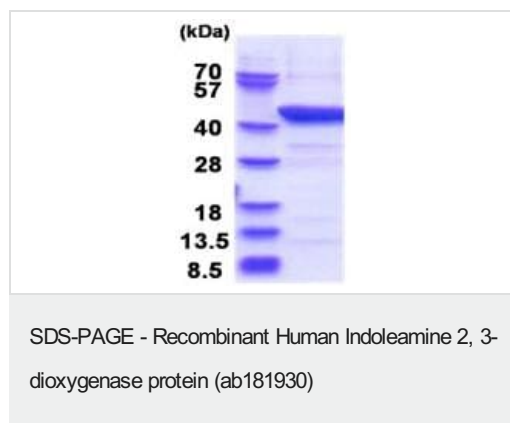
## Preparation and Storage

<b>Stability and Storage</b>	Shipped at 4°C. Store at +4°C short term (1-2 weeks). Upon delivery aliquot. Store at -20°C or -80°C. Avoid freeze / thaw cycle.  pH: 8.00 Constituents: 20% Glycerol (glycerin, glycerine), 0.02% DTT, 0.88% Sodium chloride, 0.32% Tris HCl
------------------------------	--

## General Info

<b>Function</b>	Catalyzes the cleavage of the pyrrol ring of tryptophan and incorporates both atoms of a molecule of oxygen.
<b>Pathway</b>	Amino-acid degradation; L-tryptophan degradation via kynurenine pathway; L-kynurenine from L-tryptophan: step 1/2.
<b>Sequence similarities</b>	Belongs to the indoleamine 2,3-dioxygenase family.

## Images



15% SDS-PAGE analysis of 3 µg ab181930.

**Please note:** All products are "FOR RESEARCH USE ONLY. NOT FOR USE IN DIAGNOSTIC PROCEDURES"

## Our Abpromise to you: Quality guaranteed and expert technical support

- Replacement or refund for products not performing as stated on the datasheet
- Valid for 12 months from date of delivery

- Response to your inquiry within 24 hours
- We provide support in Chinese, English, French, German, Japanese and Spanish
- Extensive multi-media technical resources to help you
- We investigate all quality concerns to ensure our products perform to the highest standards

If the product does not perform as described on this datasheet, we will offer a refund or replacement. For full details of the Abpromise, please visit <https://www.abcam.com/abpromise> or contact our technical team.

### **Terms and conditions**

---

- Guarantee only valid for products bought direct from Abcam or one of our authorized distributors