

## Product datasheet

# Recombinant Human Inhibin beta A protein ab53506

1 Image

### Description

---

<b>Product name</b>	Recombinant Human Inhibin beta A protein
<b>Purity</b>	> 90 % SDS-PAGE.
<b>Expression system</b>	Escherichia coli
<b>Accession</b>	<b><u>P08476</u></b>
<b>Protein length</b>	Full length protein
<b>Animal free</b>	No
<b>Nature</b>	Recombinant
<b>Species</b>	Human
<b>Amino acids</b>	311 to 426
<b>Tags</b>	His tag N-Terminus
<b>Additional sequence information</b>	The sequence is the mature full length without the signal peptide and propeptide. Hexahistidine tag at N-terminus.

### Specifications

---

Our **Abpromise guarantee** covers the use of **ab53506** in the following tested applications.

The application notes include recommended starting dilutions; optimal dilutions/concentrations should be determined by the end user.

<b>Applications</b>	SDS-PAGE
<b>Form</b>	Liquid

### Preparation and Storage

---

<b>Stability and Storage</b>	Shipped at 4°C. Upon delivery aliquot and store at -20°C. Avoid freeze / thaw cycles.
------------------------------	---

### General Info

---

<b>Function</b>	Inhibins and activins inhibit and activate, respectively, the secretion of follitropin by the pituitary gland. Inhibins/activins are involved in regulating a number of diverse functions such as hypothalamic and pituitary hormone secretion, gonadal hormone secretion, germ cell development and maturation, erythroid differentiation, insulin secretion, nerve cell survival,
-----------------	---

embryonic axial development or bone growth, depending on their subunit composition. Inhibins appear to oppose the functions of activins.

**Sequence similarities**

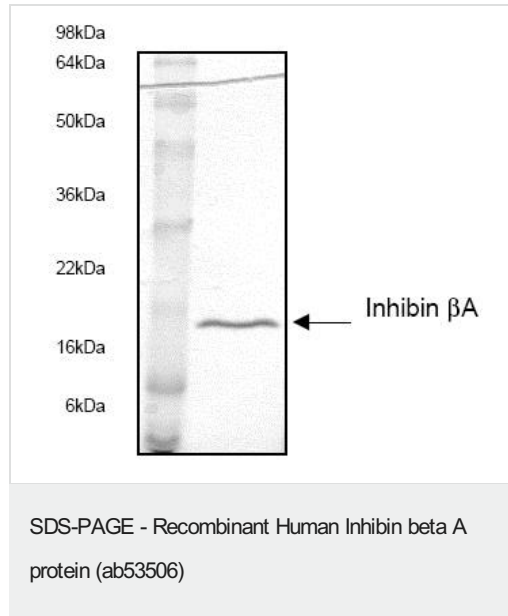
Belongs to the TGF-beta family.

**Cellular localization**

Secreted.

---

**Images**



**Please note:** All products are "FOR RESEARCH USE ONLY. NOT FOR USE IN DIAGNOSTIC PROCEDURES"

---

**Our Abpromise to you: Quality guaranteed and expert technical support**

- Replacement or refund for products not performing as stated on the datasheet
- Valid for 12 months from date of delivery
- Response to your inquiry within 24 hours
  
- We provide support in Chinese, English, French, German, Japanese and Spanish
- Extensive multi-media technical resources to help you
- We investigate all quality concerns to ensure our products perform to the highest standards

If the product does not perform as described on this datasheet, we will offer a refund or replacement. For full details of the Abpromise, please visit <https://www.abcam.com/abpromise> or contact our technical team.

---

**Terms and conditions**

- Guarantee only valid for products bought direct from Abcam or one of our authorized distributors