

Recombinant Human INSL4 protein ab132848

1 Image

Description

Product name	Recombinant Human INSL4 protein
Expression system	Wheat germ
Accession	<u>Q14641</u>
Protein length	Full length protein
Animal free	No
Nature	Recombinant
Species	Human
Sequence	AELRGCGPRFGKHLLSYCPMPEKTFITTPGGWLLESGRP KEMVSTSNKDK GQALGTTSEFIPNLSPELKKPLSEGQPSLKKILSRKKRSG RHRFDPFCC EVICDDGTSVKLCT
Predicted molecular weight	38 kDa including tags
Amino acids	26 to 139

Specifications

Our **Abpromise guarantee** covers the use of **ab132848** in the following tested applications.

The application notes include recommended starting dilutions; optimal dilutions/concentrations should be determined by the end user.

Applications	Western blot
	SDS-PAGE
	ELISA
Form	Liquid
Additional notes	

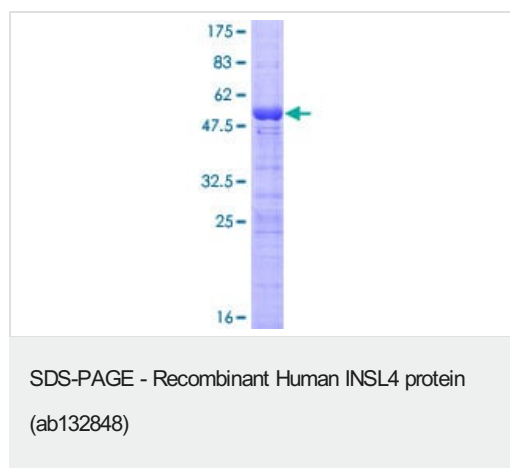
Preparation and Storage

Stability and Storage	Shipped on dry ice. Upon delivery aliquot and store at -80°C. Avoid freeze / thaw cycles. pH: 8.00 Constituents: 0.31% Glutathione, 0.79% Tris HCl
------------------------------	--

General Info

Function	May play an important role in trophoblast development and in the regulation of bone formation.
Tissue specificity	Expressed in placenta, uterus and in fetal perichondrium. Expression levels were increased in both early placentas and molar pregnancies and were reduced in choriocarcinoma cells.
Sequence similarities	Belongs to the insulin family.
Developmental stage	Highly expressed in the early placenta. Expression of epil peptides in the villous cytotrophoblast is different from that displayed by the syncytiotrophoblast. In fetal tissues it was identified in the perichondrium of all four limbs, vertebrae, and ribs. It was abundant in interbone ligaments.
Cellular localization	Secreted.

Images



12.5% SDS-PAGE analysis of ab132848 stained with Coomassie Blue.

Please note: All products are "FOR RESEARCH USE ONLY. NOT FOR USE IN DIAGNOSTIC PROCEDURES"

Our Abpromise to you: Quality guaranteed and expert technical support

- Replacement or refund for products not performing as stated on the datasheet
- Valid for 12 months from date of delivery
- Response to your inquiry within 24 hours
- We provide support in Chinese, English, French, German, Japanese and Spanish
- Extensive multi-media technical resources to help you
- We investigate all quality concerns to ensure our products perform to the highest standards

If the product does not perform as described on this datasheet, we will offer a refund or replacement. For full details of the Abpromise, please visit <https://www.abcam.com/abpromise> or contact our technical team.

Terms and conditions

- Guarantee only valid for products bought direct from Abcam or one of our authorized distributors