

Recombinant Human INT4 protein ab164892

1 Image

Description	
Product name	Recombinant Human INT4 protein
Expression system	Wheat germ
Protein length	Full length protein
Animal free	No
Nature	Recombinant
Species	Human
Sequence	MAAHLKKRVYEEFTKVVQPQEEIATKKLRLTKPSKSAALHI DLCKATSPA DALQYLLQFARKPVEAESVEGVVRILLEHYKENDPSVRL KIASLLGLLS KTAGFSPDCIMDDAINILQNEKSHQVLAQLLDTLLAIGTKLP ENQAIQMR LVDVACKHLTDTSHGVRNKCLQLLGNLGSLEKSVTKDAE GLAARDVQKII GDYFSDQDPRVRTAAIKAMLQLHERGLKLHQTINYQACKL LSDDYEQVRS AAVQLIWVVSQLYPESVPIPSSNEEIRLVDDAFGKICHMVS DGSWVVRV QAAKLLGSMEQVSSHFLQTLDDKKLMSDLRRKRTAHERA KELYSSGEFSS GRKWGDDAPKEEVDTGAVNLIESGACGAFVHGLED EMYEVRIA AVEALCM LAQSSPSFAEKCLDFLVDMFNDEIEEVRLQSIHTMRKISNN ITLREDQLD TVLAVLEDSSRDIREALHELLCCTNVSTKEGIHLALVELLK NLTKYPTDR DSWKCLKFLGSRHPTLVLPVPELLSTHPFFDTAEPDMD DPAYIAVLVL IFNAAKTCPTMPALFSDHTFRHYAYLRDSLHLVPALRLPG RKLVS SAVS PSIIPQEDPSQQFLQQSLERVVSLQHLD PQGAQELLEFTIR DLQRLGELQ SELAGVADFSATYLRQQLLIKALQEKLWNVAAPLYLKQS DLASAAAKQI MEETYKMEFMYSGVENKQVVIIH HMLQAKALQLIVTARTT

RGLDPLFGM
 CEKFLQEVDFFQRYFIADLPHLQDSFVDKLLDLMPLMTS
 KPAEVVKILQ
 TMLRQSAFLHLPLPEQIHKASATIIEPAGESDNPLRFTSGLV
 VALDV DAT
 LEHVQDPQNTVKVQVLYPDGQAQMIHPKPADFRNPGPGR
 HRLITQVYLSH
 TAWTEACQVEVRLLLLAYNSSARIPKCPWMEGGEMSPQV
 ETSIEGTIPFSK PVKVYIMPKPARR

Amino acids	1 to 963
Tags	GST tag N-Terminus

Specifications

Our **Abpromise guarantee** covers the use of **ab164892** in the following tested applications.

The application notes include recommended starting dilutions; optimal dilutions/concentrations should be determined by the end user.

Applications	ELISA Western blot
Form	Liquid
Additional notes	This product was previously labelled as INTS4.

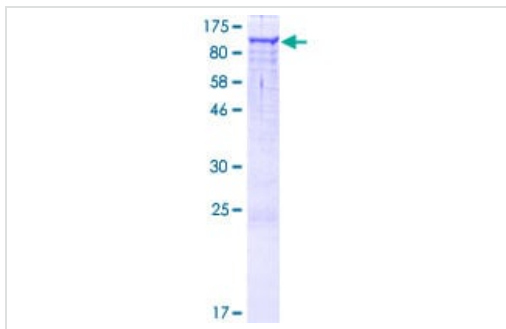
Preparation and Storage

Stability and Storage	Shipped on dry ice. Upon delivery aliquot and store at -80°C. Avoid freeze / thaw cycles. pH: 8.00 Constituents: 0.31% Glutathione, 0.79% Tris HCl
------------------------------	--

General Info

Function	Component of the Integrator complex, a complex involved in the small nuclear RNAs (snRNA) U1 and U2 transcription and in their 3'-box-dependent processing. The Integrator complex is associated with the C-terminal domain (CTD) of RNA polymerase II largest subunit (POLR2A) and is recruited to the U1 and U2 snRNAs genes.
Sequence similarities	Belongs to the Integrator subunit 4 family. Contains 8 HEAT repeats.
Cellular localization	Nucleus.

Images



SDS-PAGE - Recombinant Human INT4 protein
(ab164892)

ab164892 on a 12.5% SDS-PAGE stained with Coomassie Blue.

Please note: All products are "FOR RESEARCH USE ONLY. NOT FOR USE IN DIAGNOSTIC PROCEDURES"

Our Abpromise to you: Quality guaranteed and expert technical support

- Replacement or refund for products not performing as stated on the datasheet
- Valid for 12 months from date of delivery
- Response to your inquiry within 24 hours
- We provide support in Chinese, English, French, German, Japanese and Spanish
- Extensive multi-media technical resources to help you
- We investigate all quality concerns to ensure our products perform to the highest standards

If the product does not perform as described on this datasheet, we will offer a refund or replacement. For full details of the Abpromise, please visit <https://www.abcam.com/abpromise> or contact our technical team.

Terms and conditions

- Guarantee only valid for products bought direct from Abcam or one of our authorized distributors