

Product datasheet

Recombinant Human Interferon gamma protein ab51240

[1 References](#) [3 Images](#)

Description

Product name	Recombinant Human Interferon gamma protein
Biological activity	Measured in a cytotoxicity assay using WiDr cells. The ED50 for this effect is less or equal to 1.5 ng/ml.
Purity	> 95 % SDS-PAGE. Recombinant human Interferon gamma was expressed in <i>E.coli</i> and purified by FPLC gel-filtration chromatography, after refolding of the isolated inclusion bodies in a renaturation buffer.
Endotoxin level	< 1.000 Eu/μg
Expression system	Escherichia coli
Protein length	Full length protein
Animal free	No
Nature	Recombinant
Species	Human
Sequence	MQDPYVKEAE NLKKYFNAGH SDVADNGTLF LGILKNWKEE SDRKIMQSQI VSFYFKLFKN FKDDQSIQKS VETIKEDMNV KFFNSNKKKR DDFEKLTNYS VTDLNVQRKA IHELIQVMAE LSPAAGTGKR KRSQMLFRGR RASQ

Specifications

Our **Abpromise guarantee** covers the use of **ab51240** in the following tested applications.

The application notes include recommended starting dilutions; optimal dilutions/concentrations should be determined by the end user.

Applications	Biological Activity
	SDS-PAGE
	Western blot
Form	Liquid

Preparation and Storage

Stability and Storage

Shipped at 4°C. Upon delivery aliquot and store at -20°C. Avoid freeze / thaw cycles.

pH: 7.40

Constituents: PBS, 10% Glycerol (glycerin, glycerine)

This product is an active protein and may elicit a biological response in vivo, handle with caution.

General Info

Function

Produced by lymphocytes activated by specific antigens or mitogens. IFN-gamma, in addition to having antiviral activity, has important immunoregulatory functions. It is a potent activator of macrophages, it has antiproliferative effects on transformed cells and it can potentiate the antiviral and antitumor effects of the type I interferons.

Tissue specificity

Released primarily from activated T lymphocytes.

Involvement in disease

In Caucasians, genetic variation in IFNG is associated with the risk of aplastic anemia (AA) [MIM:609135]. AA is a rare disease in which the reduction of the circulating blood cells results from damage to the stem cell pool in bone marrow. In most patients, the stem cell lesion is caused by an autoimmune attack. T-lymphocytes, activated by an endogenous or exogenous, and most often unknown antigenic stimulus, secrete cytokines, including IFN-gamma, which would in turn be able to suppress hematopoiesis.

Sequence similarities

Belongs to the type II (or gamma) interferon family.

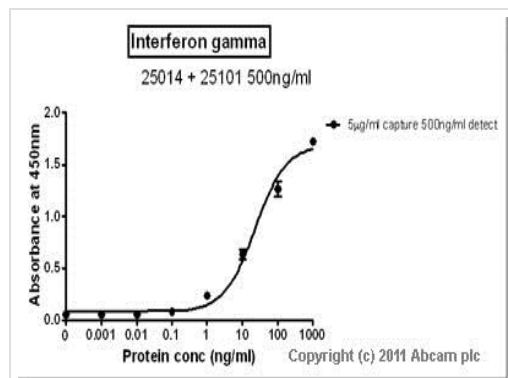
Post-translational modifications

Proteolytic processing produces C-terminal heterogeneity, with proteins ending alternatively at Gly-150, Met-157 or Gly-161.

Cellular localization

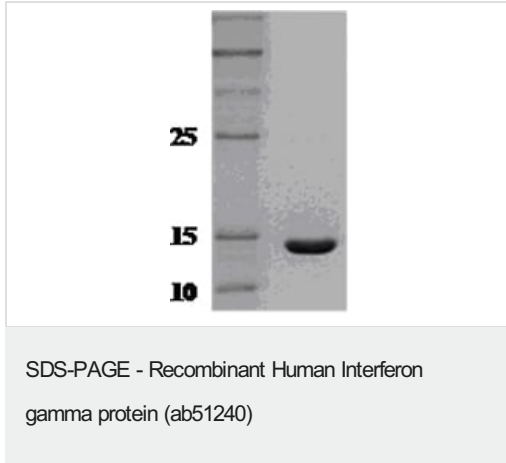
Secreted.

Images

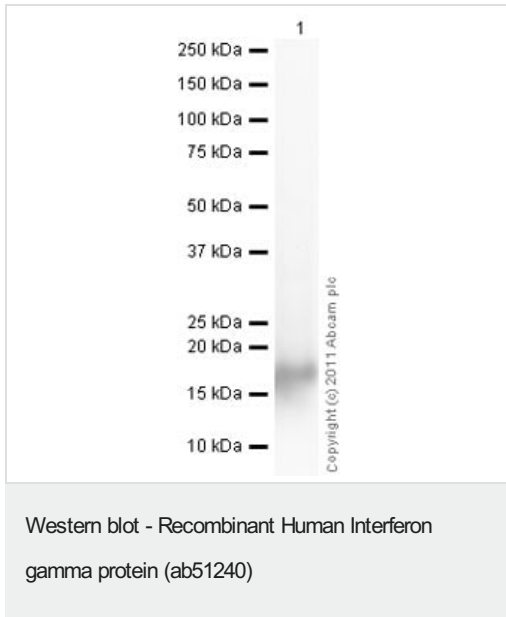


Standard curve for Interferon gamma (Analyte: ab51240); dilution range 1pg/ml to 1µg/ml using Capture Antibody **ab25014** at 5µg/ml and Detector Antibody **ab25101** at 0.5µg/ml.

Sandwich ELISA - Recombinant Human Interferon gamma protein (ab51240)



ab51240 on 14% SDS-PAGE.



Please note: All products are "FOR RESEARCH USE ONLY. NOT FOR USE IN DIAGNOSTIC PROCEDURES"

Our Abpromise to you: Quality guaranteed and expert technical support

- Replacement or refund for products not performing as stated on the datasheet
- Valid for 12 months from date of delivery
- Response to your inquiry within 24 hours
- We provide support in Chinese, English, French, German, Japanese and Spanish
- Extensive multi-media technical resources to help you
- We investigate all quality concerns to ensure our products perform to the highest standards

If the product does not perform as described on this datasheet, we will offer a refund or replacement. For full details of the Abpromise, please visit <https://www.abcam.com/abpromise> or contact our technical team.

Terms and conditions

- Guarantee only valid for products bought direct from Abcam or one of our authorized distributors