

Recombinant Human INTS5 protein ab164292

1 Image

Description

Product name	Recombinant Human INTS5 protein
Expression system	Wheat germ
Accession	<u>Q6P9B9</u>
Protein length	Full length protein
Animal free	No
Nature	Recombinant
Species	Human
Sequence	

MSALCDPPGAPGPPGPAPATHGPAPLSAQELSQEIKAFI
TGVDPIILGHQL
SAREHARCGLLLLRSLPPARAAVLDHLRGVFDES
VRAHL
AALDETPVAGP
PHLRPPPPSHVPAGGPGLEDVVQEVQQVLSEFIRANPKA
WAPVISAWSID
LMGQLSSTYSGQHQRVPHATGALNELLQLWMGCRATRTL
MDIYVQCLSAL
IGSCPACVDALLDTSVQHSPhFDWVVAHIGSSFPGTIISR
VLSCGLKDF
CVHGGAGGGAGSSGGSSSQTPSTDPFPGSPAIPAEKRV
PKIASVVGILGH
LASRHGDSIRRELLRMFHDSLGGSGGRSGDPSLQATVP
FLLQLAVMSPA
LLGTVSGELVDCLKPPAVLSQLQQHLQGFPREELDNMLN
LAVHLVSQASG
AGAYRLLQFLVDTAMPASVITTQGLAVPDTVREACDRLIQL
LLLHLQKLV
HHRGGSPGEGVLGPPPPRLLVPFLDALKNHV
GELCGETL
RLERKRFLWQH
QLLGLLSVYTRPSCGPEALGHLLSRARSPEELSLATQLYA
GLVVSLSGLL
PLAFRSCLARVHAGTLQPPFTARFLRNLALLV
GWEQGG
EGPAALGAHFG
ESASAHLSDLAPLLLHPEEEVAEAAA
SLLAICPPSEALS
PSQLLGLVRA
GVHRFFASRLRHGPPGVASACQLL
TRLSQTSPAGLKAVL
QLLVEGALHRG

NTELFGGQVDGDNETLSVVSASLASASLLDTNRRHTAAV
PGPGGWSVFH
AGVIGRGLKPPKFVQSRNQQEVYNTQSLLSLLVHCCSAP
GGTECGECWG
APILSPEAAKAVAVTLVESVCPDAAGAELAWPPEEHARA
TVERDLRIGRR
FREQPLLFELLKLVAAPALCYCSVLLRGLLAALLGHWE
ASRHPDTTHS
PWHLEASCTLVAVMAEGSLLPPALGNMHEVFSQLAPFEV
RLLLLSVWGFL
REHGPLPQKFIFQSERGRFIRDFSREGGGEGGPHLAVLHS
VLHRNIDRLG LFSGRFQAPSPSTLLRQGT

Amino acids 1 to 1019
Tags GST tag N-Terminus

Specifications

Our **Abpromise guarantee** covers the use of **ab164292** in the following tested applications.

The application notes include recommended starting dilutions; optimal dilutions/concentrations should be determined by the end user.

Applications Western blot
ELISA

Form Liquid

Additional notes

Preparation and Storage

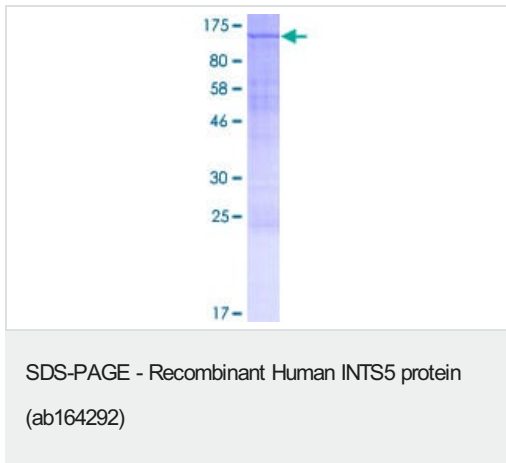
Stability and Storage Shipped on dry ice. Upon delivery aliquot and store at -80°C. Avoid freeze / thaw cycles.
pH: 8.00
Constituents: 0.31% Glutathione, 0.79% Tris HCl

General Info

Relevance INTS5 is a subunit of the Integrator complex, a complex involved in the small nuclear RNAs (snRNA) U1 and U2 transcription and in their 3'-box-dependent processing. The Integrator complex is associated with the C-terminal domain (CTD) of RNA polymerase II largest subunit (POLR2A) and is recruited to the U1 and U2 snRNAs genes.

Cellular localization Nucleus. Membrane; Multi pass membrane protein.

Images



ab164292 on a 12.5% SDS-PAGE stained with Coomassie Blue.

Please note: All products are "FOR RESEARCH USE ONLY. NOT FOR USE IN DIAGNOSTIC PROCEDURES"

Our Abpromise to you: Quality guaranteed and expert technical support

- Replacement or refund for products not performing as stated on the datasheet
- Valid for 12 months from date of delivery
- Response to your inquiry within 24 hours
- We provide support in Chinese, English, French, German, Japanese and Spanish
- Extensive multi-media technical resources to help you
- We investigate all quality concerns to ensure our products perform to the highest standards

If the product does not perform as described on this datasheet, we will offer a refund or replacement. For full details of the Abpromise, please visit <https://www.abcam.com/abpromise> or contact our technical team.

Terms and conditions

- Guarantee only valid for products bought direct from Abcam or one of our authorized distributors