

Recombinant Human IRE-BP1 protein ab161860

1 Image

Description

Product name	Recombinant Human IRE-BP1 protein
Expression system	Wheat germ
Protein length	Full length protein
Animal free	No
Nature	Recombinant
Species	Human
Sequence	MHGILGACGRLRLEPATPLTPLLCAERDECRAHPCRNGG SCRNLPGAYVC RCPAGFVGVMHCETEVDACDSSPCQHGGRCESGGGAYL CVCPESEFFGYHCE TVSDPCFSSPCGGRGYCLASNGSHSCTCKVGYTGEDCA KELFPPTALKME RVEESGVSISWNPPNGPAARQMLDGYAVTVSSDGSYRR TDFVDRTRSSH QLQALAAGRAYNISVFSVKRNSNNKNDISRPVLLARTRP RPVEGFVETN VTASTISVQWALHRIRHATVSGVRVSIRHPEALRDQATDVD RSVDRTFR ALLPGKRYTIQLTTLSGLRGEEHPTESLATAPTHVWTRPLP PANLTAARV TATSAHVVDAPTPGSLLEAYVINVTTSQSTKSRYVPNGK LASYTVRDLL PGRRYQLSVIAVQSTELGPQHSEPAHLYITSPRDGADRRW HQGGHHPRV LKNRPPPARLPRLRLNDHSAPETPTQPPRFSELVDGRG RVSARFGGSPS KAATVRSHVPGNCSENPCQNGGTCVPGADAHSCDCGP GFKGRRCELACIK VSRPCTRLFSETKSFPVWEGGVCHHVYKRVRVHQDICF KESCESTSLKL
Amino acids	1 to 600
Tags	GST tag N-Terminus

Specifications

Specifications

Our **Abpromise guarantee** covers the use of **ab161860** in the following tested applications.

The application notes include recommended starting dilutions; optimal dilutions/concentrations should be determined by the end user.

Applications	ELISA
	Western blot
Form	Liquid
Additional notes	This product was previously labelled as SNED1.

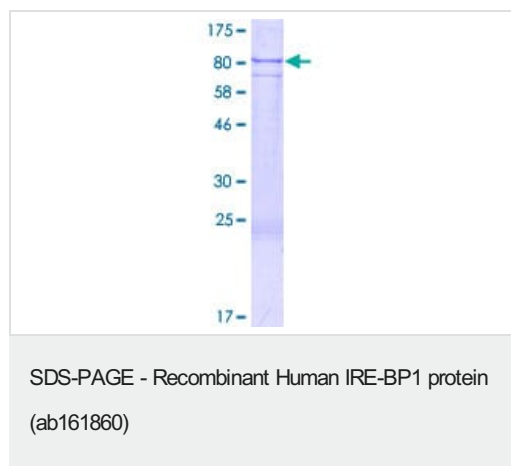
Preparation and Storage

Stability and Storage	Shipped on dry ice. Upon delivery aliquot and store at -80°C. Avoid freeze / thaw cycles.
	pH: 8.00
	Constituents: 0.31% Glutathione, 0.79% Tris HCl

General Info

Sequence similarities	Contains 15 EGF-like domains.
	Contains 3 fibronectin type-III domains.
	Contains 2 follistatin-like domains.
	Contains 1 NIDO domain.
	Contains 1 Sushi (CCP/SCR) domain.
Cellular localization	Secreted.

Images



ab161860 on a 12.5% SDS-PAGE stained with Coomassie Blue.

Please note: All products are "FOR RESEARCH USE ONLY. NOT FOR USE IN DIAGNOSTIC PROCEDURES"

Our Abpromise to you: Quality guaranteed and expert technical support

- Replacement or refund for products not performing as stated on the datasheet

- Valid for 12 months from date of delivery
- Response to your inquiry within 24 hours
- We provide support in Chinese, English, French, German, Japanese and Spanish
- Extensive multi-media technical resources to help you
- We investigate all quality concerns to ensure our products perform to the highest standards

If the product does not perform as described on this datasheet, we will offer a refund or replacement. For full details of the Abpromise, please visit <https://www.abcam.com/abpromise> or contact our technical team.

Terms and conditions

- Guarantee only valid for products bought direct from Abcam or one of our authorized distributors