

Recombinant human IRE1b protein ab190994

5 Images

Description	
Product name	Recombinant human IRE1b protein
Biological activity	The specific activity of ab190994 ws determined to be 2.6 nmol/ min/ mg.
Purity	> 95 % SDS-PAGE. Affinity purified.
Expression system	Baculovirus infected Sf9 cells
Accession	<u>Q76MJ5</u>
Protein length	Protein fragment
Animal free	No
Nature	Recombinant
Species	Human
Sequence	KQ AQPLDDPEAE QLTVVGKISF NPKDVLGRGA GGTFVFRGQF EGRAVAVKRL LRECFGLVRR EVQLLQESDR HPNVLRYFCT ERGPQFHYA LELCRASLQE YVENPDLDRG GLEPEVVLQQ LMSGLAHLHS LHVHRDLKP GNILITGPDS QGLGRVVLSD FGLCKKLPAG RCSFSLHSGI PGTEGWMAPE LLQLLPPDSP TSAVDIFSAG CVFYVLSGG SHPFGDSL YR QANILTGAPC LAHLEEEVHD KVVARDLVGA MLSPLQPRP SAPQVLAHPF FWSRAKQLQF FQDVSDWLEK ESEQEPLVRA LEAGGCAVVR DNWHEHISMP LQTDLRKF RS YKGTSVRDLL RAVRNKKHHY RELPVEVRQA LGQVPDGFVQ YFTNRFPRLL LHTHRAMRSC ASESLFLPYYPDSEARRPC PGATGR
Predicted molecular weight	80 kDa including tags
Amino acids	499 to 926
Tags	proprietary tag N-Terminus
Additional sequence information	NM_033266.

Specifications

Our **Abpromise guarantee** covers the use of **ab190994** in the following tested applications.

The application notes include recommended starting dilutions; optimal dilutions/concentrations should be determined by the end user.

Applications

Functional Studies

SDS-PAGE

Form

Liquid

Additional notes

ab64311 (Myelin Basic Protein protein) can be utilized as a substrate for assessing kinase activity

Preparation and Storage

Stability and Storage

Shipped on Dry Ice. Store at -80°C. Avoid freeze / thaw cycle.

pH: 7.50

Constituents: 25% Glycerol (glycerin, glycerine), 0.79% Tris HCl, 0.87% Sodium chloride, 0.31% Glutathione, 0.003% EDTA, 0.004% DTT, 0.002% PMSF

This product is an active protein and may elicit a biological response in vivo, handle with caution.

General Info

Function

Induces translational repression through 28S ribosomal RNA cleavage in response to ER stress. Pro-apoptotic. Appears to play no role in the unfolded-protein response, unlike closely related proteins.

Sequence similarities

Belongs to the protein kinase superfamily. Ser/Thr protein kinase family.

Contains 1 KEN domain.

Contains 1 protein kinase domain.

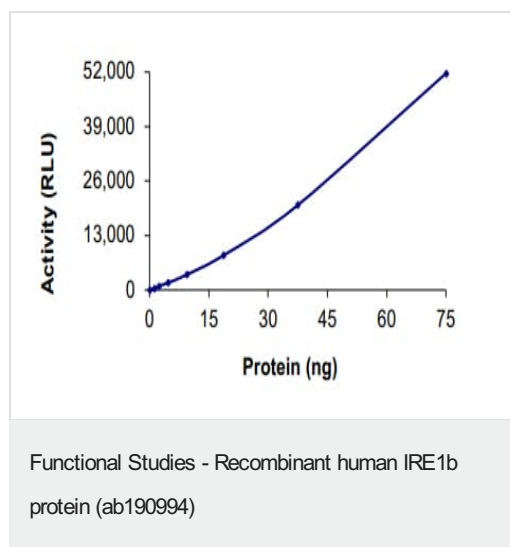
Post-translational modifications

Autophosphorylated.

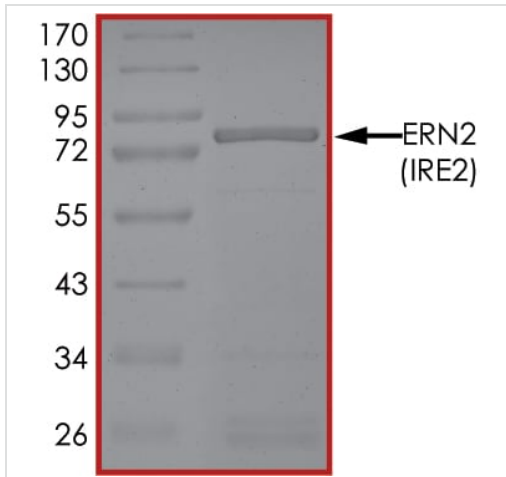
Cellular localization

Endoplasmic reticulum membrane.

Images

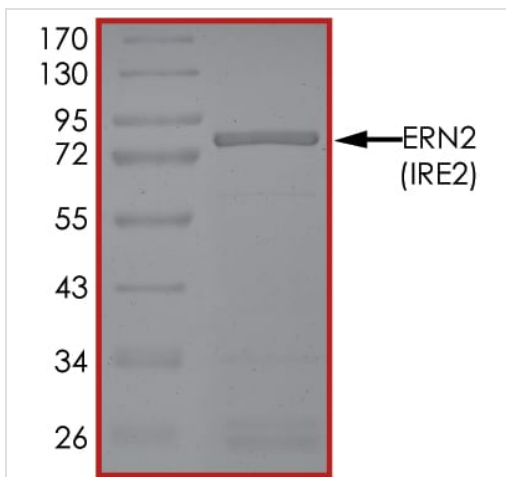


The specific activity of IRE1b (ab190994) was determined to be 2.4 nmol/min/mg as per activity assay protocol and was equivalent to 2.3 nmol/min/mg as per radiometric assay



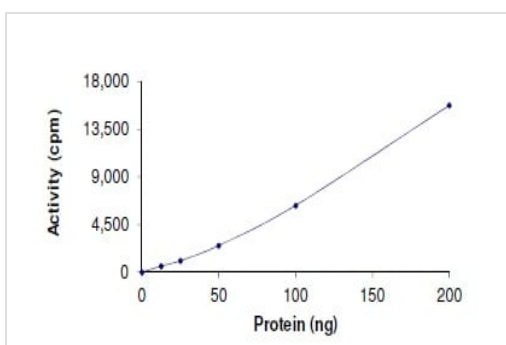
SDS PAGE analysis of ab190994

SDS-PAGE - Recombinant human IRE1b protein
(ab190994)



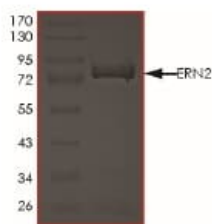
SDS PAGE analysis of ab190994

SDS-PAGE - Recombinant human IRE1b protein
(ab190994)



The specific activity of ab190994 was determined to be 2.6 nmol/
min/ mg.

Functional Studies - Recombinant human IRE1b
protein (ab190994)



SDS-PAGE - Recombinant human IRE1b protein
(ab190994)

The purity of ab190994 was determined to be >95% by densitometry, approx MW ~80 kDa.

Please note: All products are "FOR RESEARCH USE ONLY. NOT FOR USE IN DIAGNOSTIC PROCEDURES"

Our Abpromise to you: Quality guaranteed and expert technical support

- Replacement or refund for products not performing as stated on the datasheet
- Valid for 12 months from date of delivery
- Response to your inquiry within 24 hours
- We provide support in Chinese, English, French, German, Japanese and Spanish
- Extensive multi-media technical resources to help you
- We investigate all quality concerns to ensure our products perform to the highest standards

If the product does not perform as described on this datasheet, we will offer a refund or replacement. For full details of the Abpromise, please visit <https://www.abcam.com/abpromise> or contact our technical team.

Terms and conditions

- Guarantee only valid for products bought direct from Abcam or one of our authorized distributors