

Recombinant Human IRF5 protein ab114295

1 Image

Description

Product name	Recombinant Human IRF5 protein
Expression system	Wheat germ
Accession	<u>Q13568</u>
Protein length	Full length protein
Animal free	No
Nature	Recombinant
Species	Human
Sequence	MNQSIPVAPTPPRRVRLKPWLVAQVNSCQYPGLQWVNG EKKLFCIPWRHA TRHGPSQDGDNTIFKAWAKETGKYTEGVDEADPAKWKA NLRCALNKS RDF RLYDGP RDMPPQPYKIYEVCSNGPAPTDSQPPEDYSFGA GEEEEEEEEEL QRMLPSLSLTEDVKWPPTLQPPTLRPPTLQPPTLQPPVVL GPPAPDPSPL APPPGNPAGFRELLSEVLEPGPLPASLPPAGEQLLPDLLI SPHMLPLTDL EIKFQYRGRPPRALTISNPHGCRLFYSQLEATQEQVELFGP ISLEQVRFP SPEDIPSDKQRFYTNQLLDVLD RGLILQLQGQDLYAIRLCQ CKVFWSGPC ASAHDSCPNPIQREVKT KLF SLEHFLNELILFQKGQTNTTPP PFEIFFCFG EEWPDRKPREKKLITVQVVPVAARLLLEMFSGELSW SAD SIRLQISNPDL KDRMVEQFKELHHWQSQQRLQPVAQAPPGAGLGVGQG PWPMHPAGMQ
Predicted molecular weight	81 kDa including tags
Amino acids	1 to 498
Tags	GST tag N-Terminus

Specifications

Our **Abpromise guarantee** covers the use of **ab114295** in the following tested applications.

The application notes include recommended starting dilutions; optimal dilutions/concentrations should be determined by the end user.

Applications	SDS-PAGE
	ELISA
	Western blot
Form	Liquid

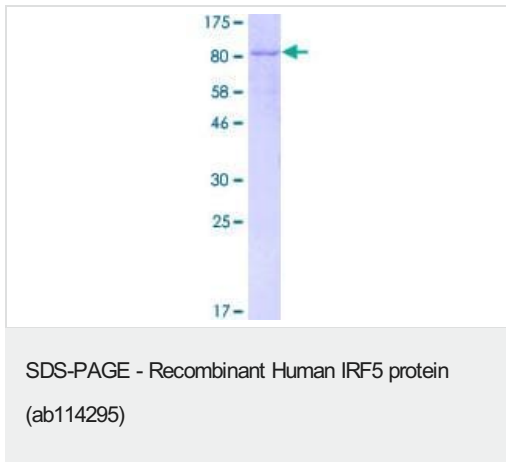
Preparation and Storage

Stability and Storage	Shipped on dry ice. Upon delivery aliquot and store at -80°C. Avoid freeze / thaw cycles. pH: 8.00 Constituents: 0.3% Glutathione, 0.79% Tris HCl
------------------------------	---

General Info

Involvement in disease	<p>Genetic variations in IRF5 are associated with susceptibility to inflammatory bowel disease type 14 (IBD14) [MIM:612245]. IBD14 is a chronic, relapsing inflammation of the gastrointestinal tract with a complex etiology. It is subdivided into Crohn disease and ulcerative colitis phenotypes. Crohn disease may affect any part of the gastrointestinal tract from the mouth to the anus, but most frequently it involves the terminal ileum and colon. Bowel inflammation is transmural and discontinuous; it may contain granulomas or be associated with intestinal or perianal fistulas. In contrast, in ulcerative colitis, the inflammation is continuous and limited to rectal and colonic mucosal layers; fistulas and granulomas are not observed. Both diseases include extraintestinal inflammation of the skin, eyes, or joints.</p> <p>Genetic variations in IRF5 are associated with susceptibility to systemic lupus erythematosus type 10 (SLEB10) [MIM:612251]. Systemic lupus erythematosus (SLE) is a chronic, inflammatory and often febrile multisystemic disorder of connective tissue. It affects principally the skin, joints, kidneys and serosal membranes. It is thought to represent a failure of the regulatory mechanisms of the autoimmune system.</p> <p>Genetic variations in IRF5 are a cause of susceptibility to rheumatoid arthritis (RA) [MIM:180300]. It is a systemic inflammatory disease with autoimmune features and a complex genetic component. It primarily affects the joints and is characterized by inflammatory changes in the synovial membranes and articular structures, widespread fibrinoid degeneration of the collagen fibers in mesenchymal tissues, and by atrophy and rarefaction of bony structures.</p>
Sequence similarities	<p>Belongs to the IRF family.</p> <p>Contains 1 IRF tryptophan pentad repeat DNA-binding domain.</p>
Cellular localization	Nucleus.

Images



12.5% SDS-PAGE image showing ab114295 at approx 80.89 kDa. Stained with Coomassie Blue.

Please note: All products are "FOR RESEARCH USE ONLY. NOT FOR USE IN DIAGNOSTIC PROCEDURES"

Our Abpromise to you: Quality guaranteed and expert technical support

- Replacement or refund for products not performing as stated on the datasheet
- Valid for 12 months from date of delivery
- Response to your inquiry within 24 hours
- We provide support in Chinese, English, French, German, Japanese and Spanish
- Extensive multi-media technical resources to help you
- We investigate all quality concerns to ensure our products perform to the highest standards

If the product does not perform as described on this datasheet, we will offer a refund or replacement. For full details of the Abpromise, please visit <https://www.abcam.com/abpromise> or contact our technical team.

Terms and conditions

- Guarantee only valid for products bought direct from Abcam or one of our authorized distributors