

Recombinant Human ITIH1/SHAP protein ab114721

1 Image

Description

Product name	Recombinant Human ITIH1/SHAP protein
Expression system	Wheat germ
Accession	<u>P19827</u>
Protein length	Full length protein
Animal free	No
Nature	Recombinant
Species	Human
Sequence	

MDGAMGPRGLLLCMYLVSLILQAMPALGSATGRSKSSE
KRQAVDTAVDG
VFIRSLKVNCKVTSRFAHYVTSQVVNTANEAREVAFDLEI
PKTAFISDF
AVTADGNAFIGDIKDKVTAWKQYRKAASGENAGLVRASG
RTMEQFTIHL
TVNPQSKVTFQLTYEEVLKRNHMQYEMIKVKPKQLVHHFE
IDVDIFEPQ
GISKLDASFLPKELAAQTIKKSFSGKKGHVLFRTVSQ
QQSCPTCSTS
LLNGHFKVTYDVSRDKICDLLVANNHFAHFFAPQNLNMN
KNVVFVIDIS
GSMRGQKVKQTKEALLKILGDMQPGDYFDLVLFGTRVQS
WKGSLVQASEA
NLQAAQDFVRGFSLEATNLNGGLLRGIELNQVQESLPEL
SNHASILIM
LTDGDPTEGVTDRSQILKNVRNAIRGFPLYNLGFHNVD
FNFLEVMSME
NNGRAQRIYEDHDATQQQLQGFYSQVAKPLLVDVDLQYPQ
DAVLALTQNH
KQYYEGSENVAGRIADNKQSSFKADVQAHGEGQEFSITC
LVDEEEMKKL
LRERGHMLENHVERLWAYLTQELLAKRMKVDREVRANLS
SQALRMSLDY
GFVTPLTSMIRGMADQDGLKPTIDKPSEDSPPLEMLGPR
RTFVLSALQP
SPTHSSNTQRLPDRVTVGVDTPHFIIHVPQKEDTLFCFNIN
EETGVILSL

VQDPNTGFSVNGQLIGNKARSPGQHDGTYFGRLGIANPAT
 DFQLEVTPQN
 ITLNPGFGGPVFSWRDQAVLRQDGVVVTINKKRNLVVSVD
 DGGTFEVVLH
 RVWKGSSVHQDFLG FYVLDSHRMSARTHGLLGQFFHPIG
 FEVSDIHPGSD
 PTKPDATMVVRNRRLTVTRGLQKDYSKDPWHGAEVSCW
 FIHNNGAGLIDG AYTDYVPDIF

Predicted molecular weight	126 kDa including tags
Amino acids	1 to 911

Specifications

Our **Abpromise guarantee** covers the use of **ab114721** in the following tested applications.

The application notes include recommended starting dilutions; optimal dilutions/concentrations should be determined by the end user.

Applications	ELISA SDS-PAGE Western blot
Form	Liquid
Additional notes	This product was previously labelled as ITIH1.

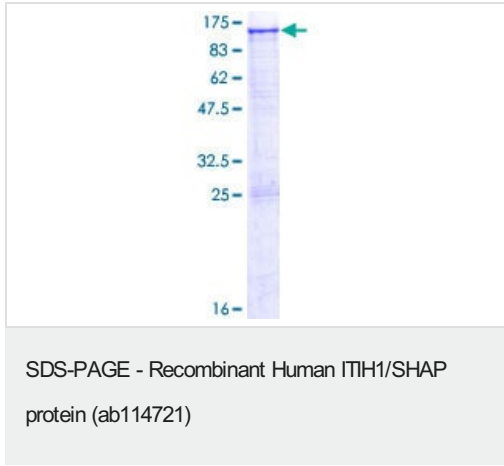
Preparation and Storage

Stability and Storage	Shipped on dry ice. Upon delivery aliquot and store at -80°C. Avoid freeze / thaw cycles. pH: 8.00 Constituents: 0.3% Glutathione, 0.79% Tris HCl
------------------------------	---

General Info

Function	May act as a carrier of hyaluronan in serum or as a binding protein between hyaluronan and other matrix protein, including those on cell surfaces in tissues to regulate the localization, synthesis and degradation of hyaluronan which are essential to cells undergoing biological processes. Contains a potential peptide which could stimulate a broad spectrum of phagocytotic cells.
Sequence similarities	Belongs to the ITIH family. Contains 1 VIT domain. Contains 1 VWFA domain.
Post-translational modifications	Heavy chains are linked to bikunin via chondroitin 4-sulfate esterified to the alpha-carboxyl of the C-terminal aspartate after propeptide cleavage. The S-linked glycan is composed of two 6-carbon sugars, possibly Glc or Gal.
Cellular localization	Secreted.

Images



12.5% SDS-PAGE Stained with Coomassie Blue

Please note: All products are "FOR RESEARCH USE ONLY. NOT FOR USE IN DIAGNOSTIC PROCEDURES"

Our Abpromise to you: Quality guaranteed and expert technical support

- Replacement or refund for products not performing as stated on the datasheet
- Valid for 12 months from date of delivery
- Response to your inquiry within 24 hours
- We provide support in Chinese, English, French, German, Japanese and Spanish
- Extensive multi-media technical resources to help you
- We investigate all quality concerns to ensure our products perform to the highest standards

If the product does not perform as described on this datasheet, we will offer a refund or replacement. For full details of the Abpromise, please visit <https://www.abcam.com/abpromise> or contact our technical team.

Terms and conditions

- Guarantee only valid for products bought direct from Abcam or one of our authorized distributors