

## Product datasheet

# Recombinant Human Junctional Adhesion Molecule 2/JAM-B protein (Fc Chimera His Tag) ab233603

[1 Image](#)

### Description

<b>Product name</b>	Recombinant Human Junctional Adhesion Molecule 2/JAM-B protein (Fc Chimera His Tag)	
<b>Purity</b>	> 90 % SDS-PAGE. Affinity purified	
<b>Endotoxin level</b>	< 1.000 Eu/μg	
<b>Expression system</b>	Baculovirus infected insect cells	
<b>Accession</b>	<b><u>P57087</u></b>	
<b>Protein length</b>	Protein fragment	
<b>Animal free</b>	No	
<b>Nature</b>	Recombinant	
<b>Species</b>	Human	
<b>Sequence</b>	ADPFSAPKDQQVVTAVEYQEAILACKTPKKTVSSRLEWK KLGRSVSFVYY QQTLQGDFKNRAEMIDFNIRIKNVTRSDAGKYRCEVSAPS EQGQNLEEDT VTLEVLVAPAVPSCVEVPSSALSGTVVELRCQDKEGNPAP EYTWFKDGIRL LENPRLGSQSTNSSYTMNTKTGTLQFNTVSKLDTGEYSCE ARNSVGYRRC PGKRMQVDDLNISLEPKSCDKTHTCPPCPAPPELLGGPSV FLFPPKPKDTL MISRTPEVTCVVVDVSHEDPEVKFNWYVDGVEVHNAKTK PREEQYNSTYR VVSVLTVLHQDWLNGKEYKCKVSNKALPAPIEKTISKAKG QPREPQVYTL PPSRDELTKNQVSLTCLVKGFYPSDIAVEWESNGQPENN YKTTTPVLDS GSFFLYSKLTVDKSRWQQGNVFCSSVMHEALHNHYTQKS LSLSPGKHHHH HH	
<b>Predicted molecular weight</b>	51 kDa including tags	
<b>Amino acids</b>	29 to 238	
<b>Tags</b>	His tag C-Terminus	

**Additional sequence information** Extracellular domain fused to hlgG-His-tag at C-terminus (NP\_067042).

## Specifications

---

Our **Abpromise guarantee** covers the use of **ab233603** in the following tested applications.

The application notes include recommended starting dilutions; optimal dilutions/concentrations should be determined by the end user.

<b>Applications</b>	SDS-PAGE
<b>Form</b>	Liquid
<b>Additional notes</b>	Previously labelled as Junctional Adhesion Molecule 2.

## Preparation and Storage

---

<b>Stability and Storage</b>	Shipped at 4°C. Store at +4°C short term (1-2 weeks). Upon delivery aliquot. Store at -20°C or -80°C. Avoid freeze / thaw cycle.  pH: 7.40 Constituents: PBS, 50% Glycerol (glycerin, glycerine), 0.02% DTT
------------------------------	--

## General Info

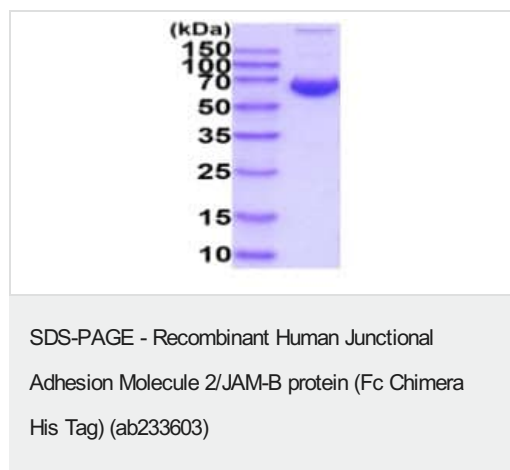
---

<b>Function</b>	May play a role in the processes of lymphocyte homing to secondary lymphoid organs.
<b>Tissue specificity</b>	Highest expression in the heart, placenta, lung, foreskin and lymph node. Prominently expressed on high endothelial venules, also present on the endothelia of other vessels. Localized to the intercellular boundaries of high endothelial cells.
<b>Sequence similarities</b>	Belongs to the immunoglobulin superfamily. Contains 1 Ig-like C2-type (immunoglobulin-like) domain. Contains 1 Ig-like V-type (immunoglobulin-like) domain.
<b>Cellular localization</b>	Cell junction > tight junction. Cell membrane. Localized at tight junctions of both epithelial and endothelial cells.

---

## Images

---



15% SDS-PAGE analysis of 3 µg ab233603.

MW: 50-70 kDa (SDS-PAGE under reducing conditions).

**Please note:** All products are "FOR RESEARCH USE ONLY. NOT FOR USE IN DIAGNOSTIC PROCEDURES"

### **Our Abpromise to you: Quality guaranteed and expert technical support**

---

- Replacement or refund for products not performing as stated on the datasheet
- Valid for 12 months from date of delivery
- Response to your inquiry within 24 hours
  
- We provide support in Chinese, English, French, German, Japanese and Spanish
- Extensive multi-media technical resources to help you
- We investigate all quality concerns to ensure our products perform to the highest standards

If the product does not perform as described on this datasheet, we will offer a refund or replacement. For full details of the Abpromise, please visit <https://www.abcam.com/abpromise> or contact our technical team.

### **Terms and conditions**

---

- Guarantee only valid for products bought direct from Abcam or one of our authorized distributors