

Recombinant Human Kallikrein 2/KLK2 protein (His tag) ab229375

1 Image

Description

Product name	Recombinant Human Kallikrein 2/KLK2 protein (His tag)		
Purity	> 90 % SDS-PAGE. Affinity purified		
Endotoxin level	< 1.000 Eu/µg		
Expression system	Baculovirus infected insect cells		
Accession	P20151		
Protein length	Full length protein		
Animal free	No		
Nature	Recombinant		
Species	Human		
Sequence	ADPIVGGWECEKHSQPWQVAVYSHGWAHCGGVLVHPQ WVLTAAHCLKKNS QVWLGRHNLFEPEDTGQRPVSHSFPHPLYNMSLLKHQS LRPDEDSSHDL MLLRLSEPAKITDVVKVLGLPTQEPALGTTCYASGWGSIE PEEFLRPRSL QCVSLHLLSNDMCARAYSEKVTEFMLCAGLWTGGKDTG GGDSGGPLVCNG VLQGITSWGPEPCALPEKPAVYTKVVHYRKWIKDTIAANP HHHHHH		
Predicted molecular weight	27 kDa including tags		
Amino acids	25 to 261		
Tags	His tag C-Terminus		
Additional sequence information	Product corresponds to the mature chain. The signal and propeptides are not included. NP_005542		

Specifications

Our **Abpromise guarantee** covers the use of **ab229375** in the following tested applications.

The application notes include recommended starting dilutions; optimal dilutions/concentrations should be determined by the end user.

Applications	SDS-PAGE
Form	Liquid
Additional notes	This product was previously labelled as Kallikrein 2

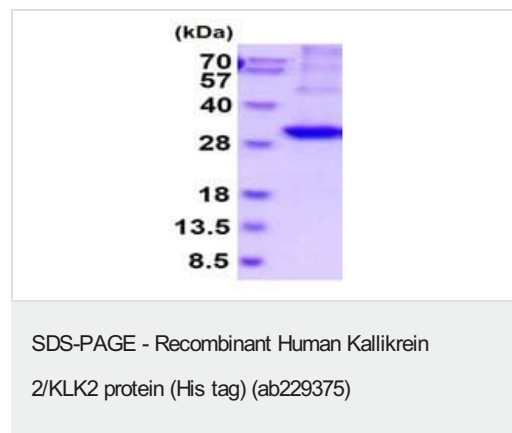
Preparation and Storage

Stability and Storage	Shipped at 4°C. Store at +4°C short term (1-2 weeks). Upon delivery aliquot. Store at -20°C or -80°C. Avoid freeze / thaw cycle. pH: 7.40 Constituents: PBS, 10% Glycerol
------------------------------	---

General Info

Function	Glandular kallikreins cleave Met-Lys and Arg-Ser bonds in kininogen to release Lys-bradykinin.
Sequence similarities	Belongs to the peptidase S1 family. Kallikrein subfamily. Contains 1 peptidase S1 domain.

Images



3 µg ab229375 analysed by 15% SDS-PAGE.

Please note: All products are "FOR RESEARCH USE ONLY. NOT FOR USE IN DIAGNOSTIC PROCEDURES"

Our Abpromise to you: Quality guaranteed and expert technical support

- Replacement or refund for products not performing as stated on the datasheet
- Valid for 12 months from date of delivery
- Response to your inquiry within 24 hours
- We provide support in Chinese, English, French, German, Japanese and Spanish
- Extensive multi-media technical resources to help you
- We investigate all quality concerns to ensure our products perform to the highest standards

If the product does not perform as described on this datasheet, we will offer a refund or replacement. For full details of the Abpromise, please visit <https://www.abcam.com/abpromise> or contact our technical team.

Terms and conditions

- Guarantee only valid for products bought direct from Abcam or one of our authorized distributors