

Product datasheet

Recombinant Human KASH5 protein ab165568

[1 Image](#)

Description

Product name	Recombinant Human KASH5 protein
Expression system	Wheat germ
Protein length	Full length protein
Animal free	No
Nature	Recombinant
Species	Human
Sequence	MDLPEGPVGGPTAEMYLRRERPEEARLGMPVSLEEQILNS TFEACDPQRTG TVAVAQVLAYLEAVTGQGPQDARLQTLANSLDPNGEGPK ATVDLDTFLVV MRDWIAACQLHGGLLEEEETAFQGALTSQQLPSCPEAE EPANLESFGGE DPRPELQATADLLSSLEDLELSNRRLVGENAKLQRSMET AEEGSARLGEE ILALRKQLHSTQQALQFAKAMDEELEDLKTARSLEEQNR SLLAQARQAE KEQQHLVAEMETLQEENGKLLAERDGVKKRSQELAMEK DTLKRQLFECEH LICQRDILSERTRDVESLAQTLEEYRVTTQELRLEISRLEE QLSQTYESG PDELPEGAQLRRVWTELLPPSLGLEIEAIRKQEVATAD LSNPLCGVWQ WEEVIHETSEETFPSEAPAGGQRNFQGEPAHPPEGRKE PSMWLTRREEE EDAESQVTADLPVPLGAPRPGDIPENPPERPARRELQQA LVPVMKKLVPV RRRAWGQLCLPPQRLRVTRHPLIPAPVLGLLLLLLLLSVLLL GPSPPPTWP HLQLCYLQPPPV
Amino acids	1 to 562
Tags	GST tag N-Terminus

Specifications

Our **Abpromise guarantee** covers the use of **ab165568** in the following tested applications.

The application notes include recommended starting dilutions; optimal dilutions/concentrations should be determined by the end user.

Applications	Western blot ELISA
Form	Liquid
Additional notes	This product was previously labelled as CCDC155.

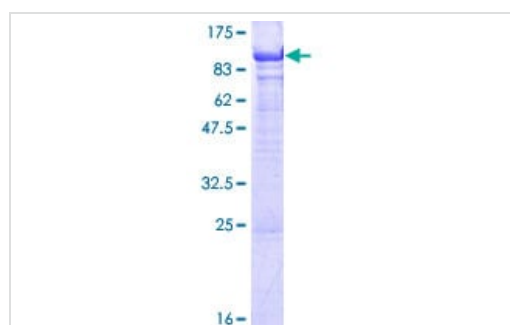
Preparation and Storage

Stability and Storage	Shipped on dry ice. Upon delivery aliquot and store at -80°C. Avoid freeze / thaw cycles. pH: 8.00 Constituents: 0.31% Glutathione, 0.79% Tris HCl
------------------------------	--

General Info

Function	May be involved in meiotic chromosome dynamics and homolog pairing.
Domain	The C-terminal 22 AA is required and sufficient for localization to telomeres at the nuclear envelope.
Cellular localization	Nucleus outer membrane. Nucleus. Chromosome > telomere. Localized exclusively at telomeres from the leptotene to diplotene stages.

Images



ab165568 on a 12.5% SDS-PAGE stained with Coomassie Blue.

SDS-PAGE - Recombinant Human KASH5 protein
(ab165568)

Please note: All products are "FOR RESEARCH USE ONLY. NOT FOR USE IN DIAGNOSTIC PROCEDURES"

Our Abpromise to you: Quality guaranteed and expert technical support

- Replacement or refund for products not performing as stated on the datasheet
- Valid for 12 months from date of delivery

- Response to your inquiry within 24 hours
- We provide support in Chinese, English, French, German, Japanese and Spanish
- Extensive multi-media technical resources to help you
- We investigate all quality concerns to ensure our products perform to the highest standards

If the product does not perform as described on this datasheet, we will offer a refund or replacement. For full details of the Abpromise, please visit <https://www.abcam.com/abpromise> or contact our technical team.

Terms and conditions

- Guarantee only valid for products bought direct from Abcam or one of our authorized distributors