

## Product datasheet

# Recombinant Human KIR2DL1 protein (Tagged) ab271573

[2 Images](#)

### Description

<b>Product name</b>	Recombinant Human KIR2DL1 protein (Tagged)
<b>Purity</b>	>= 90 % SDS-PAGE.
<b>Expression system</b>	HEK 293 cells
<b>Accession</b>	<b><u>NM_014218</u></b>
<b>Protein length</b>	Protein fragment
<b>Animal free</b>	No
<b>Nature</b>	Recombinant
<b>Species</b>	Human
<b>Predicted molecular weight</b>	53 kDa including tags
<b>Molecular weight information</b>	Protein runs at higher than predicted MW on SDS-PAGE due to glycosylation.
<b>Amino acids</b>	22 to 242
<b>Tags</b>	Avi tag C-Terminus , Fc tag C-Terminus
<b>Additional sequence information</b>	Avi-tag fused at the C terminus to the Fc portion of human IgG1.

### Specifications

Our **Abpromise guarantee** covers the use of **ab271573** in the following tested applications.

The application notes include recommended starting dilutions; optimal dilutions/concentrations should be determined by the end user.

<b>Applications</b>	SDS-PAGE Size Exclusion Chromatography
<b>Form</b>	Liquid
<b>Additional notes</b>	Enzymatically biotin-labeled using Avi-tag™ technology

### Preparation and Storage

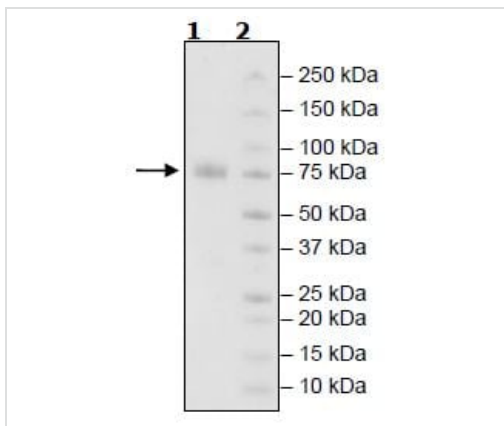
<b>Stability and Storage</b>	Shipped on Dry Ice. Store at -80°C. Avoid freeze / thaw cycle. pH: 7.40
------------------------------	--

Constituents: 0.13% Sodium phosphate, 0.64% Sodium chloride, 0.02% Potassium chloride, 20% Glycerol (glycerin, glycerine)

## General Info

<b>Function</b>	Receptor on natural killer (NK) cells for HLA-C alleles. Inhibits the activity of NK cells thus preventing cell lysis.
<b>Sequence similarities</b>	Belongs to the immunoglobulin superfamily. Contains 2 Ig-like C2-type (immunoglobulin-like) domains.
<b>Cellular localization</b>	Cell membrane.

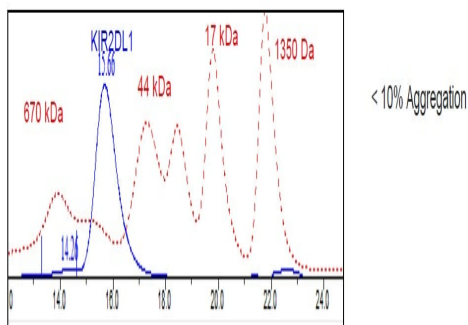
## Images



SDS-PAGE analysis of ab271573. This protein runs at a higher molecular weight than predicted due to glycosylation.

SDS-PAGE - Recombinant Human KIR2DL1 protein  
(Tagged) (ab271573)

### Gel Filtration Curve



SEC analysis of ab271573.

Size Exclusion Chromatography - Recombinant  
Human KIR2DL1 protein (Tagged) (ab271573)

**Please note:** All products are "FOR RESEARCH USE ONLY. NOT FOR USE IN DIAGNOSTIC PROCEDURES"

### **Our Abpromise to you: Quality guaranteed and expert technical support**

---

- Replacement or refund for products not performing as stated on the datasheet
- Valid for 12 months from date of delivery
- Response to your inquiry within 24 hours
  
- We provide support in Chinese, English, French, German, Japanese and Spanish
- Extensive multi-media technical resources to help you
- We investigate all quality concerns to ensure our products perform to the highest standards

If the product does not perform as described on this datasheet, we will offer a refund or replacement. For full details of the Abpromise, please visit <https://www.abcam.com/abpromise> or contact our technical team.

### **Terms and conditions**

---

- Guarantee only valid for products bought direct from Abcam or one of our authorized distributors