

Recombinant human KRAS protein (Active) ab268714

★★★★★ [1 Abreviews](#) [2 Images](#)

Description

Product name	Recombinant human KRAS protein (Active)
Biological activity	The specific activity of ab268714 was determined to be 2.6 nmol/min/mg in a GTPase-Glo assay using GTP solution substrate.
Purity	> 70 % SDS-PAGE.
Expression system	Escherichia coli
Accession	<u>P01116</u>
Protein length	Full length protein
Animal free	No
Nature	Recombinant
Species	Human
Sequence	TEYKLVVVGAGGVGKSALTIQLIQNHFVDEYDPTIEDSYRK QVVIDGETC LLDILDTAGQEEYSAMRDQYMRTGEGFLCVFAINTKSFE DIHHYREQIK RVKDSDEVPMVLVGNKCDLPSRTVDTKQAQDLARSYGIP FIETSAKTRQR VEDAFYTLVREIRQYRLKKISKEEKTPGCVKIKKC
Molecular weight information	SDS-PAGE molecular weight: ~23kDa
Amino acids	2 to 186
Tags	His tag N-Terminus
Additional sequence information	GenBank: NM_033360

Specifications

Our **Abpromise guarantee** covers the use of **ab268714** in the following tested applications.

The application notes include recommended starting dilutions; optimal dilutions/concentrations should be determined by the end user.

Applications	Functional Studies
	SDS-PAGE
Form	Liquid

Preparation and Storage

Stability and Storage

Shipped on Dry Ice. Upon delivery aliquot. Store at -80°C. Avoid freeze / thaw cycle.

pH: 7.00

Preservative: 1.02% Imidazole

Constituents: 0.82% Sodium phosphate, 1.74% Sodium chloride, 0.002% PMSF, 0.004% DTT, 25% Glycerol (glycerin, glycerine)

This product is an active protein and may elicit a biological response in vivo, handle with caution.

General Info

Function

Ras proteins bind GDP/GTP and possess intrinsic GTPase activity.

Involvement in disease

Defects in KRAS are a cause of acute myelogenous leukemia (AML) [MIM:601626]. AML is a malignant disease in which hematopoietic precursors are arrested in an early stage of development.

Defects in KRAS are a cause of juvenile myelomonocytic leukemia (JMML) [MIM:607785]. JMML is a pediatric myelodysplastic syndrome that constitutes approximately 30% of childhood cases of myelodysplastic syndrome (MDS) and 2% of leukemia. It is characterized by leukocytosis with tissue infiltration and in vitro hypersensitivity of myeloid progenitors to granulocyte-macrophage colony stimulating factor.

Defects in KRAS are the cause of Noonan syndrome type 3 (NS3) [MIM:609942]. Noonan syndrome (NS) [MIM:163950] is a disorder characterized by dysmorphic facial features, short stature, hypertelorism, cardiac anomalies, deafness, motor delay, and a bleeding diathesis. It is a genetically heterogeneous and relatively common syndrome, with an estimated incidence of 1 in 1000-2500 live births. Rarely, NS is associated with juvenile myelomonocytic leukemia (JMML). NS3 inheritance is autosomal dominant.

Defects in KRAS are a cause of gastric cancer (GASC) [MIM:613659]; also called gastric cancer intestinal or stomach cancer. Gastric cancer is a malignant disease which starts in the stomach, can spread to the esophagus or the small intestine, and can extend through the stomach wall to nearby lymph nodes and organs. It also can metastasize to other parts of the body. The term gastric cancer or gastric carcinoma refers to adenocarcinoma of the stomach that accounts for most of all gastric malignant tumors. Two main histologic types are recognized, diffuse type and intestinal type carcinomas. Diffuse tumors are poorly differentiated infiltrating lesions, resulting in thickening of the stomach. In contrast, intestinal tumors are usually exophytic, often ulcerating, and associated with intestinal metaplasia of the stomach, most often observed in sporadic disease. Note=Defects in KRAS are a cause of pilocytic astrocytoma (PA). Pilocytic astrocytomas are neoplasms of the brain and spinal cord derived from glial cells which vary from histologically benign forms to highly anaplastic and malignant tumors.

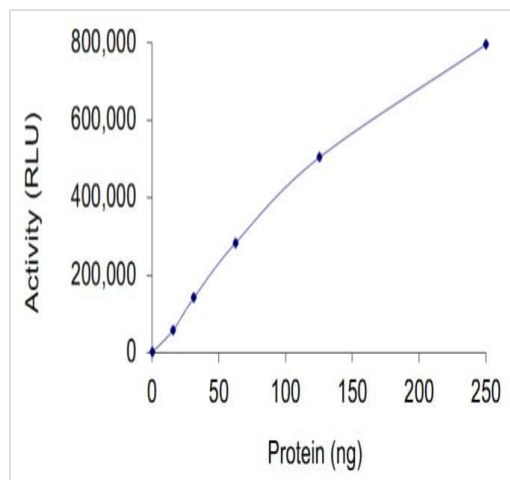
Defects in KRAS are a cause of cardiofaciocutaneous syndrome (CFC syndrome) [MIM:115150]; also known as cardio-facio-cutaneous syndrome. CFC syndrome is characterized by a distinctive facial appearance, heart defects and mental retardation. Heart defects include pulmonic stenosis, atrial septal defects and hypertrophic cardiomyopathy. Some affected individuals present with ectodermal abnormalities such as sparse, friable hair, hyperkeratotic skin lesions and a generalized ichthyosis-like condition. Typical facial features are similar to Noonan syndrome. They include high forehead with bitemporal constriction, hypoplastic supraorbital ridges, downslanting palpebral fissures, a depressed nasal bridge, and posteriorly angulated ears with prominent helices. The inheritance of CFC syndrome is autosomal dominant.

Note=KRAS mutations are involved in cancer development.

Sequence similarities

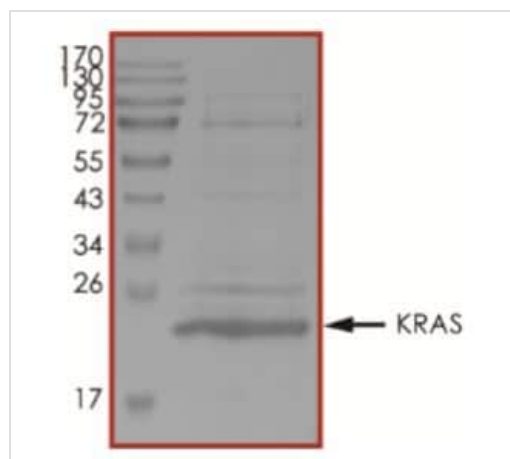
Belongs to the small GTPase superfamily. Ras family.

Images



Functional Studies - Recombinant human KRAS protein (Active) (ab268714)

The specific activity of ab268714 was determined to be 2.6 nmol/min/mg in a GTPase-Glo assay using GTP solution substrate.



SDS-PAGE - Recombinant human KRAS protein (Active) (ab268714)

SDS-PAGE analysis of ab268714.

Please note: All products are "FOR RESEARCH USE ONLY. NOT FOR USE IN DIAGNOSTIC PROCEDURES"

Our Abpromise to you: Quality guaranteed and expert technical support

- Replacement or refund for products not performing as stated on the datasheet
- Valid for 12 months from date of delivery
- Response to your inquiry within 24 hours
- We provide support in Chinese, English, French, German, Japanese and Spanish
- Extensive multi-media technical resources to help you

- We investigate all quality concerns to ensure our products perform to the highest standards

If the product does not perform as described on this datasheet, we will offer a refund or replacement. For full details of the Abpromise, please visit <https://www.abcam.com/abpromise> or contact our technical team.

Terms and conditions

- Guarantee only valid for products bought direct from Abcam or one of our authorized distributors