

# Recombinant Human Lambda Light chain protein

## ab158750

1 Image

Description	
Product name	Recombinant Human Lambda Light chain protein
Expression system	Wheat germ
Protein length	Full length protein
Animal free	No
Nature	Recombinant
Species	Human
Sequence	MAWTPLLLPLLTFC TVSEASYDLTQPPSVSVSPGQTARIT CSGDALPRKY AFWYQQKSGQAPVLVIYEDSKRPSGIPERFSGSSSGTMA TLTISGAQVED EGDYCYSTDISGYPVFGGGTKVTVLGQPKAAPSVTLFPP SSEELQANKA TLVCLISDFYPGAVTVAWKADSSPVKAGVETTTPSKQSN KYAASSYLSL TPEQWRSHKSYSCQVTHEGSTVEKTVAPTECS
Amino acids	1 to 232
Tags	GST tag N-Terminus

Specifications	
Our <b>Abpromise guarantee</b> covers the use of <b>ab158750</b> in the following tested applications.	
The application notes include recommended starting dilutions; optimal dilutions/concentrations should be determined by the end user.	
Applications	Western blot ELISA
Form	Liquid
Additional notes	

Preparation and Storage
-------------------------

## Stability and Storage

Shipped on dry ice. Upon delivery aliquot and store at -80°C. Avoid freeze / thaw cycles.

pH: 8.00

Constituents: 0.31% Glutathione, 0.79% Tris HCl

## General Info

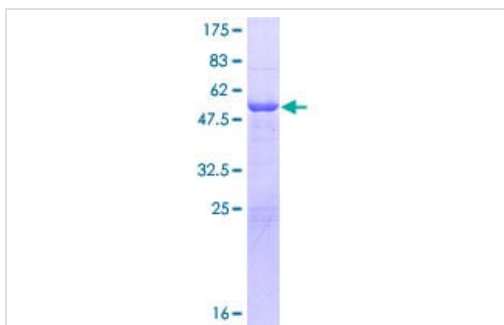
### Relevance

All five immunoglobulin classes share the same basic four polypeptide chain structure of two heavy-chains and two light chains. There are five heavy chain types, and two light-chain types (Kappa and Lambda) both having a molecular weight of 22.5kDa. Any heavy-chain type can associate with either light-chain type, but on any immunoglobulin molecule both light-chains are of the same type. Kappa and Lambda consist of a variable region and a constant region and can easily be differentiated by the antigenic properties of the constant region. The ratio of Kappa to Lambda is 70:30, the vast majority of which is bound to heavy-chain in immunoglobulin. In normal individuals low levels of free light-chain are present in serum (kappa, 1.6-15.2 mg/L; Lambda, 0.4-4.2mg/L), with the occurrence of multiple myeloma or other B-cell malignancies these levels can be greatly elevated and can be found at high levels in the urine (Bence-Jones proteins).

### Cellular localization

Cytoplasmic

## Images



SDS-PAGE - Recombinant Human Lambda Light chain protein (ab158750)

ab158750 on a 12.5% SDS-PAGE stained with Coomassie Blue.

**Please note:** All products are "FOR RESEARCH USE ONLY. NOT FOR USE IN DIAGNOSTIC PROCEDURES"

## Our Abpromise to you: Quality guaranteed and expert technical support

- Replacement or refund for products not performing as stated on the datasheet
- Valid for 12 months from date of delivery
- Response to your inquiry within 24 hours
- We provide support in Chinese, English, French, German, Japanese and Spanish
- Extensive multi-media technical resources to help you
- We investigate all quality concerns to ensure our products perform to the highest standards

If the product does not perform as described on this datasheet, we will offer a refund or replacement. For full details of the Abpromise,

please visit <https://www.abcam.com/abpromise> or contact our technical team.

#### **Terms and conditions**

---

- Guarantee only valid for products bought direct from Abcam or one of our authorized distributors