

Product datasheet

Recombinant Human LANCL1 protein ab181923

1 Image

Description

Product name	Recombinant Human LANCL1 protein
Purity	> 95 % SDS-PAGE. ab181923 is purified by using anion-exchange chromatography (DEAE sepharose resin) and gel-filtration chromatography (Sephacryl S-200) with 20mM Tris pH 7.5, 2mM EDTA.
Expression system	Escherichia coli
Accession	<u>O43813</u>
Protein length	Full length protein
Animal free	No
Nature	Recombinant
Species	Human
Sequence	<pre> MGSSHHHHHH SSGLVPRGSH MGSMARAFP NPYADYNKSL AEGYFDAAGR LTPEFSQRLT NKIRELLQQM ERGLKSADPR DGTGYTGWAG IAVLYLHLYD VFGDPAYLQL AHGYVKQSLN CLTKRSITFL CGDAGPLAVA AVLYHKMNNE KQAEDCITRL IHLNKIDPHA PNEMLYGRIG YIALLFVNK NFGVEKIPQS HIQQICETIL TSGENLARKR NFTAKSPLMY EWYQEYVGA AHGLAGIYYY LMQPSLQVSQ GKLHSLVKPS VDYVCQLKFP SGNYPPIGD NRDLLVHWCH GAPGVYMLI QAYKVFREEK YLCDAYQCAD VIWQYGLLKK GYGLCHGSAG NAYAFLTYN LTQDMKYLYR ACKFAEWCLE YGEHGCRTPD TPFSLFEGMA GTIYFLADLL VPTKARFPAF EL </pre>
Predicted molecular weight	48 kDa including tags
Amino acids	1 to 399
Tags	His tag N-Terminus
Additional sequence information	NP_006046

Specifications

Our **Abpromise guarantee** covers the use of **ab181923** in the following tested applications.

The application notes include recommended starting dilutions; optimal dilutions/concentrations should be determined by the end user.

Applications	Mass Spectrometry SDS-PAGE
Mass spectrometry	MALDI-TOF
Form	Liquid

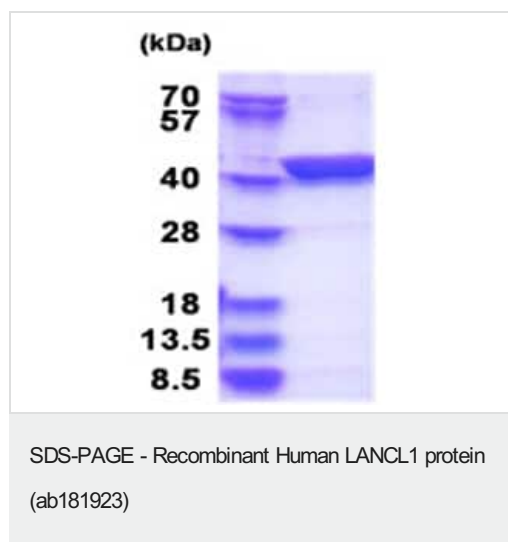
Preparation and Storage

Stability and Storage	Shipped at 4°C. Store at +4°C short term (1-2 weeks). Upon delivery aliquot. Store at -20°C or -80°C. Avoid freeze / thaw cycle. pH: 7.5 Constituents: 0.32% Tris HCl, 20% Glycerol (glycerin, glycerine), 0.02% DTT, 0.88% Sodium chloride
------------------------------	---

General Info

Function	May play a role in EPS8 signaling. Binds glutathion.
Tissue specificity	Detected in erythrocytes, brain, kidney, testis, ovary, heart, lung, placenta and spleen (at protein level). Ubiquitous. Strongly expressed in brain, spinal cord, pituitary gland, kidney, heart, skeletal muscle, pancreas, ovary and testis.
Sequence similarities	Belongs to the LanC-like protein family.
Cellular localization	Cytoplasm. Membrane. Nucleus. Detected at the surface of Maurer's clefts in malaria-infected erythrocytes at late stages of parasite development.

Images



15% SDS-PAGE analysis of ab181923 (3µg).

Please note: All products are "FOR RESEARCH USE ONLY. NOT FOR USE IN DIAGNOSTIC PROCEDURES"

Our Abpromise to you: Quality guaranteed and expert technical support

- Replacement or refund for products not performing as stated on the datasheet
- Valid for 12 months from date of delivery
- Response to your inquiry within 24 hours

- We provide support in Chinese, English, French, German, Japanese and Spanish
- Extensive multi-media technical resources to help you
- We investigate all quality concerns to ensure our products perform to the highest standards

If the product does not perform as described on this datasheet, we will offer a refund or replacement. For full details of the Abpromise, please visit <https://www.abcam.com/abpromise> or contact our technical team.

Terms and conditions

- Guarantee only valid for products bought direct from Abcam or one of our authorized distributors