

Product datasheet

Recombinant Human LBH protein ab171498

[1 Image](#)

Description

Product name	Recombinant Human LBH protein
Purity	> 90 % SDS-PAGE. ab171498 is purified by using conventional chromatography techniques.
Expression system	Escherichia coli
Accession	<u>Q53QV2</u>
Protein length	Full length protein
Animal free	No
Nature	Recombinant
Species	Human
Sequence	MGSSHHHHHH SSGLVPRGSH MGSMSTYFPI HCPDYLRSAK MTEVMMNTQP MEEIGLSPRK DGLSYQIFPD PSDFDRCKKL KDRLPSIVVE PTEGEVESGE LRWPPEEFLV QEDEQDNCEE TAKENKEQ
Predicted molecular weight	15 kDa including tags
Amino acids	1 to 105
Tags	His tag N-Terminus

Specifications

Our **Abpromise guarantee** covers the use of **ab171498** in the following tested applications.

The application notes include recommended starting dilutions; optimal dilutions/concentrations should be determined by the end user.

Applications	SDS-PAGE
Mass spectrometry	MALDI-TOF
Form	Liquid

Preparation and Storage

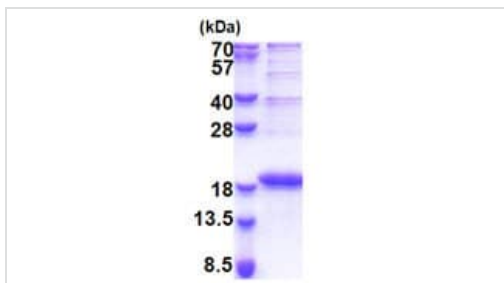
Stability and Storage	Shipped at 4°C. Store at +4°C short term (1-2 weeks). Upon delivery aliquot. Store at -20°C or -80°C. Avoid freeze / thaw cycle. pH: 8.00
------------------------------	--

Constituents: 0.02% DTT, 0.32% Tris HCl, 20% Glycerol (glycerin, glycerine), 0.88% Sodium chloride

General Info

Function	Transcriptional activator which may act in mitogen-activated protein kinase signaling pathway.
Tissue specificity	Highly expressed in heart, and expressed at low levels in placenta, lung, skeletal muscle, kidney and liver.
Sequence similarities	Belongs to the LBH family.
Developmental stage	Expressed in heart of 25 and 17 weeks embryos.
Cellular localization	Nucleus. Cytoplasm.

Images



15% SDS-PAGE analysis of ab171498 (3µg).

SDS-PAGE - Recombinant Human LBH protein
(ab171498)

Please note: All products are "FOR RESEARCH USE ONLY. NOT FOR USE IN DIAGNOSTIC PROCEDURES"

Our Abpromise to you: Quality guaranteed and expert technical support

- Replacement or refund for products not performing as stated on the datasheet
- Valid for 12 months from date of delivery
- Response to your inquiry within 24 hours
- We provide support in Chinese, English, French, German, Japanese and Spanish
- Extensive multi-media technical resources to help you
- We investigate all quality concerns to ensure our products perform to the highest standards

If the product does not perform as described on this datasheet, we will offer a refund or replacement. For full details of the Abpromise, please visit <https://www.abcam.com/abpromise> or contact our technical team.

Terms and conditions

- Guarantee only valid for products bought direct from Abcam or one of our authorized distributors