

Recombinant Human LEO1/RDL protein ab132311

1 Image

Description

Product name	Recombinant Human LEO1/RDL protein
Expression system	Wheat germ
Accession	<u>Q8WVC0</u>
Protein length	Full length protein
Animal free	No
Nature	Recombinant
Species	Human
Sequence	MADMEDLFGSDADSEAERKDSDSGSDSDSDQENAASG SNASGSESDQDER GDSGQPSNKELFGDDSEDEGASHHSGSDNHSDNR SEASERSDHEDND PSDVDQHSGSEAPNDDDEDEGHRSDGGSHHSEAEGSEK AHSDDKEWGREDK SDQSDDEKIQNSDDEERAQGSDEDKLQNSDDDEKMQNT DDEERPQLSDDE RQQLSEEEKANSDDDERPVASDNDDEKQNSDDEEQPQL SDEEKMQNSDDER PQASDEEHRHSDDEEEQDHKSESARGSDSEDEVLRMK RKNAIASDSEADS DTEVPKDNSGTMDLFGGADDISSGSDGEDKPPTPGQPV DENGLPQDQQEE EPIPETRIEVEIPKVNTDLGNDLYFVKLPNFLSVEPRFPDP QYYEDEFED EEMLDDEEGRTRLKLKVENTIRWRIRRDEEGNEIKESNARV KWSDGSMSL HLGNEVFDVYKAPLQGDHNLFIHQGTGLQGQAVFKTKLT FRPHSTDSAT HRKMTLSLADRCSTQKIRILPMAGRDPECQRTEMIKKEE ERLRASIRRE SQQRRMREKQHQRGLSASYLEPDYDEEEEGEESISLAAI KNRYKGGIRE ERARIYSSDSDEGSEEDKAQRLLKAKKLTSDDEEGEPSGK RKAEDDDKANK KHKKYVISDEEEEDDD
Predicted molecular weight	102 kDa including tags

Specifications

Our **Abpromise guarantee** covers the use of **ab132311** in the following tested applications.

The application notes include recommended starting dilutions; optimal dilutions/concentrations should be determined by the end user.

Applications	SDS-PAGE
	Western blot
	ELISA
Form	Liquid
Additional notes	This product was previously labelled as LEO1.

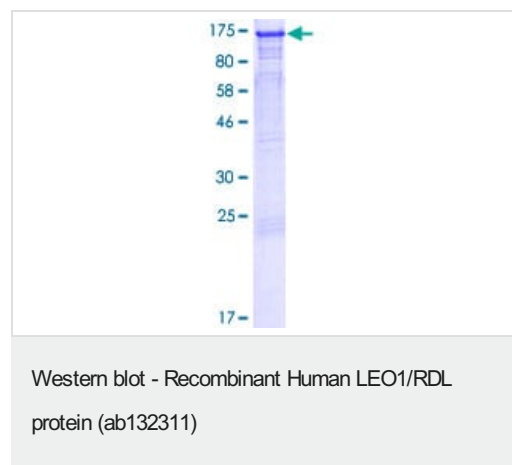
Preparation and Storage

Stability and Storage	Shipped on dry ice. Upon delivery aliquot and store at -80°C. Avoid freeze / thaw cycles.
	pH: 8.00
	Constituents: 0.31% Glutathione, 0.79% Tris HCl

General Info

Function	The PAF1 complex is a multifunctional complex. The PAF1 complex interacts with POLR2A. May be involved in both initiation and elongation, histone methylation and RNA processing. Overexpression of LEO1 induces cell growth arrest and premature senescence of fibroblasts.
Tissue specificity	Highly expressed in skeletal muscle and heart. Weakly expressed in placenta and liver.
Sequence similarities	Belongs to the LEO1 family.
Cellular localization	Nucleus.

Images



ab132311 on 12.5% SDS-PAGE stained with Coomassie blue.

Our Abpromise to you: Quality guaranteed and expert technical support

- Replacement or refund for products not performing as stated on the datasheet
- Valid for 12 months from date of delivery
- Response to your inquiry within 24 hours

- We provide support in Chinese, English, French, German, Japanese and Spanish
- Extensive multi-media technical resources to help you
- We investigate all quality concerns to ensure our products perform to the highest standards

If the product does not perform as described on this datasheet, we will offer a refund or replacement. For full details of the Abpromise, please visit <https://www.abcam.com/abpromise> or contact our technical team.

Terms and conditions

- Guarantee only valid for products bought direct from Abcam or one of our authorized distributors