

## Product datasheet

# Recombinant Human LHPP protein ab116175

[2 References](#) [1 Image](#)

### Description

<b>Product name</b>	Recombinant Human LHPP protein
<b>Purity</b>	> 90 % SDS-PAGE. ab116175 was purified using conventional chromatography.
<b>Expression system</b>	Escherichia coli
<b>Accession</b>	<b><u>Q9H008</u></b>
<b>Protein length</b>	Full length protein
<b>Animal free</b>	No
<b>Nature</b>	Recombinant
<b>Species</b>	Human
<b>Sequence</b>	MRGSHHHHP WYASMTGGQQ MGRDLYDDDD KDRWGSHMAP WGKRLAGVRG VLLDISGVLY DSGAGGGTAI AGSVEAVARL KRSRLKVRFC TNESQKSRAE LVGQLQRLGF DISEQEVTAP APAACQILKE QGLRPYLLIH DGVRSEFDQI DTSNPNCVVI ADAGESFSYQ NMNNAFQVLM ELEKPVLLISL GKGYYKETS GLMLDVGPYM KALEYACGIK AEVVGKPSPE FFKSALQAIG VEAHQAVMIG DDIVGDVGG A QRCGMRALQV RTGKFRPSDE HHPEVKADGY VDNLAEAVDL LLQHADK
<b>Predicted molecular weight</b>	34 kDa including tags
<b>Amino acids</b>	1 to 270
<b>Tags</b>	His tag N-Terminus , DDDDK tag N-Terminus

### Specifications

Our **Abpromise guarantee** covers the use of **ab116175** in the following tested applications.

The application notes include recommended starting dilutions; optimal dilutions/concentrations should be determined by the end user.

<b>Applications</b>	SDS-PAGE Mass Spectrometry
<b>Mass spectrometry</b>	MALDI-TOF
<b>Form</b>	Liquid

## Preparation and Storage

---

### Stability and Storage

Shipped at 4°C. Store at +4°C short term (1-2 weeks). Upon delivery aliquot. Store at -20°C or -80°C. Avoid freeze / thaw cycle.

pH: 8.00

Constituents: 0.02% (R\*,R\*)-1,4-Dimercaptobutan-2,3-diol, 0.32% Tris HCl, 10% Glycerol (glycerin, glycerine), 0.58% Sodium chloride, 0.002% PMSF

## General Info

---

### Tissue specificity

Expressed in liver, kidney and moderately in brain.

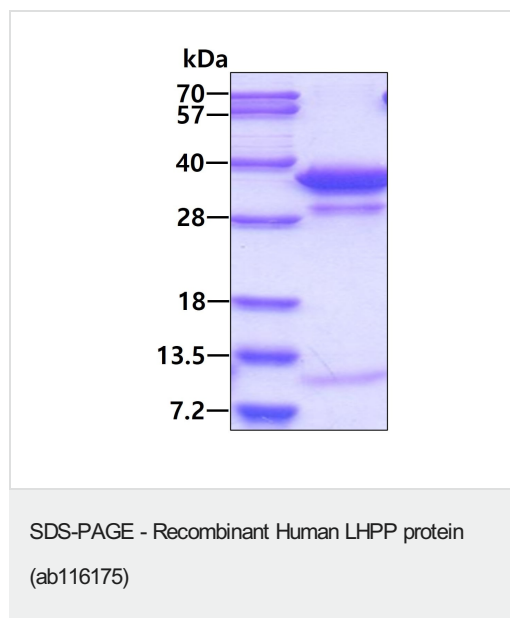
### Sequence similarities

Belongs to the HAD-like hydrolase superfamily.

---

## Images

---



ab116175 on a 15% SDS-PAGE (3ug)

**Please note:** All products are "FOR RESEARCH USE ONLY. NOT FOR USE IN DIAGNOSTIC PROCEDURES"

## Our Abpromise to you: Quality guaranteed and expert technical support

---

- Replacement or refund for products not performing as stated on the datasheet
- Valid for 12 months from date of delivery
- Response to your inquiry within 24 hours
- We provide support in Chinese, English, French, German, Japanese and Spanish
- Extensive multi-media technical resources to help you
- We investigate all quality concerns to ensure our products perform to the highest standards

If the product does not perform as described on this datasheet, we will offer a refund or replacement. For full details of the Abpromise, please visit <https://www.abcam.com/abpromise> or contact our technical team.

## Terms and conditions

---

- Guarantee only valid for products bought direct from Abcam or one of our authorized distributors