

Product datasheet

Recombinant Human Lin28A protein ab89225

[2 Images](#)

Description

Product name	Recombinant Human Lin28A protein
Purity	> 85 % SDS-PAGE. ab89225 is purified using conventional chromatography techniques.
Expression system	Escherichia coli
Protein length	Protein fragment
Animal free	No
Nature	Recombinant
Species	Human
Amino acids	42 to 209

Specifications

Our **Abpromise guarantee** covers the use of **ab89225** in the following tested applications.

The application notes include recommended starting dilutions; optimal dilutions/concentrations should be determined by the end user.

Applications	SDS-PAGE
Form	Liquid

Preparation and Storage

Stability and Storage	Shipped at 4°C. Upon delivery aliquot and store at -20°C or -80°C. Avoid repeated freeze / thaw cycles. pH: 8.00 Constituents: 0.316% Tris HCl, 10% Glycerol (glycerin, glycerine), 0.58% Sodium chloride, 0.002% PMSF
------------------------------	------------------------------------------------------------------------------------------------------------------------------------------------------------------------------------------------------------------------------

General Info

Function	Acts as a 'translational enhancer', driving specific mRNAs to polysomes and thus increasing the efficiency of protein synthesis. Its association with the translational machinery and target mRNAs results in an increased number of initiation events per molecule of mRNA and, indirectly, in stabilizing the mRNAs. Binds IGF2 mRNA, MYOD1 mRNA, ARBP/36B4 ribosomal protein mRNA
-----------------	--------------------------------------------------------------------------------------------------------------------------------------------------------------------------------------------------------------------------------------------------------------------------------------------------------------------------------------------------------------------------------------

and its own mRNA. Essential for skeletal muscle differentiation program through the translational up-regulation of IGF2 expression (By similarity). Acts as a suppressor of microRNA (miRNA) biogenesis by specifically binding the precursor let-7 (pre-let-7), a miRNA precursor. Acts by binding pre-let-7 and recruiting ZCCHC11/TUT4 uridylyltransferase, leading to the terminal uridylation of pre-let-7. Uridylated pre-let-7 miRNAs fail to be processed by Dicer and undergo degradation. Degradation of pre-let-7 in embryonic stem (ES) cells contributes to the maintenance of ES cells. In contrast, LIN28A down-regulation in neural stem cells by miR-125, allows the processing of pre-let-7. Specifically recognizes the 5'-GGAG-3' motif in the terminal loop of pre-let-7. Also recognizes and binds non pre-let-7 pre-miRNAs that contain the 5'-GGAG-3' motif in the terminal loop, leading to their terminal uridylation and subsequent degradation.

Tissue specificity

Expressed in embryonic stem cells (ES cells), placenta and testis.

Sequence similarities

Belongs to the lin-28 family.
Contains 2 CCHC-type zinc fingers.
Contains 1 CSD (cold-shock) domain.

Developmental stage

Expressed in fetal liver. Expression decreases during differentiation of ES cells or upon induction of neuronal differentiation by retinoic acid.

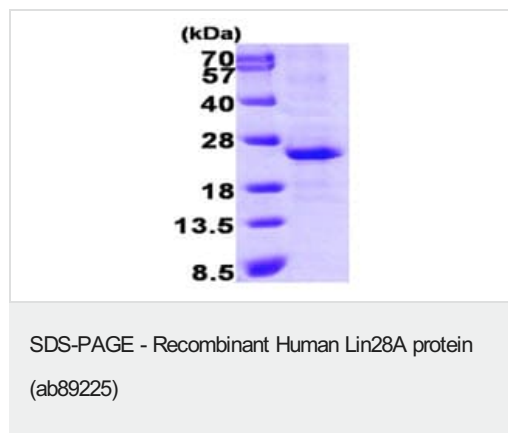
Domain

The CSD domain is required for function in muscle differentiation.

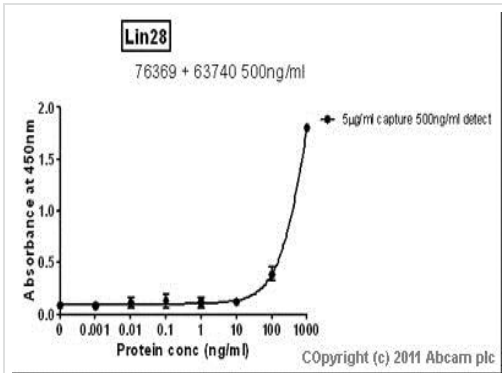
Cellular localization

Cytoplasm. Nucleus > nucleolus. Nucleolar localization observed in 10-15% of the nuclei in differentiated myotubes (By similarity). Shuttles between the cytoplasm and the nucleus. Localizes to cytoplasmic processing bodies and stress granules.

Images



15% SDS-PAGE showing ab89225 at approximately 21.1kDa (3µg).



Standard Curve for Lin28A (Analyte: (ab89225) Lin28A protein (His tag) (ab89225)); dilution range 1 pg/ml to 1 ug/ml using Capture Antibody (**ab76369**) Mouse monoclonal [6D1F9] to Lin28A (**ab76369**) at 0.2 ug/ml and Detector Antibody (**ab63740**) Rabbit polyclonal to Lin28A (**ab63740**) at 0.1 ug/ml.

Sandwich ELISA - Recombinant Human Lin28A protein (ab89225)

Please note: All products are "FOR RESEARCH USE ONLY. NOT FOR USE IN DIAGNOSTIC PROCEDURES"

Our Abpromise to you: Quality guaranteed and expert technical support

- Replacement or refund for products not performing as stated on the datasheet
- Valid for 12 months from date of delivery
- Response to your inquiry within 24 hours
- We provide support in Chinese, English, French, German, Japanese and Spanish
- Extensive multi-media technical resources to help you
- We investigate all quality concerns to ensure our products perform to the highest standards

If the product does not perform as described on this datasheet, we will offer a refund or replacement. For full details of the Abpromise, please visit <https://www.abcam.com/abpromise> or contact our technical team.

Terms and conditions

- Guarantee only valid for products bought direct from Abcam or one of our authorized distributors