

Recombinant Human LIPG protein ab188506

1 Image

Description	
Product name	Recombinant Human LIPG protein
Purity	> 85 % Densitometry. ab188506 was purified using Ni-NTA chromatography.
Endotoxin level	< 1.000 Eu/µg
Expression system	HEK 293 cells
Accession	<u>Q9Y5X9</u>
Protein length	Full length protein
Animal free	No
Nature	Recombinant
Species	Human
Sequence	ASSPVPGPE GRLEDKLHKP KATQTEVKPS VRFNLRTSKD PEHEGCYLSV GHSQPLEDCS FNMTAKTFFI IHGWTMSGIF ENWLHKLVS A LHTREKDANV VVVDWLPLAH QLYTDAVNNT RVVGHSIARM LDWLQEKDDF SLGNVHLIGY SLGAHVAGYA GNFVKGTVGR ITGLDPAGPM FEGADIIHKRL SPDDADFVDV LHTYTRSFGL SIGIQMPVGH IDIYPNGGDF QPGCGLNDVL GSIAYGTITE VVKCEHERAV HLFVDSL VNQ DKPSFAFQCT DSNRFKKGIC LSCRKNRCNS IGYNKKMRN KRNSKMYLKT RAGMPFRVYH YQMKIHVFSY KNMGEIEPTF YVTLYGTNAD SQTLPLEIVE RIEQNATNTF L VYTEEDLGD LLKIQLT WEG ASQSWYNLWK EFRSYLSQPR NPGRELNIRR IRVKSGETQR KLTFC TEDPE NTSISPGREL WFRKCRDGWR MKNETSPTVE LPKLHHHHHH
Predicted molecular weight	56 kDa including tags
Amino acids	21 to 500
Tags	His tag C-Terminus
Additional sequence information	N terminal linker (2 extra amino acids), C terminal linker (2 extra amino acids) and C terminal His tag (6 extra amino acids).

Specifications

Our **Abpromise guarantee** covers the use of **ab188506** in the following tested applications.

The application notes include recommended starting dilutions; optimal dilutions/concentrations should be determined by the end user.

Applications	ELISA
	SDS-PAGE
	Mass Spectrometry
Mass spectrometry	LC-MS/MS
Form	Lyophilized

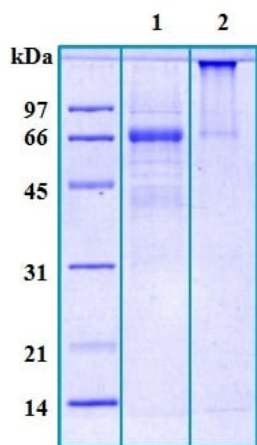
Preparation and Storage

Stability and Storage	Shipped at 4°C. Store at -80°C. Avoid freeze / thaw cycle.
	Constituents: 95% PBS, 1% Sucrose, 4% Mannitol
	Filtered (0.4 µm)
Reconstitution	Add 200 µl of deionized water to prepare a working stock solution of approximately 0.5 mg/ml and let the lyophilized pellet dissolve completely. Filter sterilize your culture media/working solutions containing this non-sterile product before using in cell culture. Aliquot reconstituted protein to avoid repeated freezing/thawing cycles and store at -80 °C for long term storage. Reconstituted protein can be stored at 4 °C for a week.

General Info

Function	Has phospholipase and triglyceride lipase activities. Hydrolyzes high density lipoproteins (HDL) more efficiently than other lipoproteins. Binds heparin.
Tissue specificity	High level of expression in the liver, placenta, lung, thyroid, kidney, testis and in the corpus luteum of the ovary. Expressed also in coronary artery endothelial cells, umbilical vein endothelial cells and in hepatocyte and osteosarcoma cell lines. Not detected in heart, brain and muscle.
Sequence similarities	Belongs to the AB hydrolase superfamily. Lipase family. Contains 1 PLAT domain.
Cellular localization	Secreted.

Images



SDS PAGE analysis of ab188506

Lane 1: Reduced and boiled sample, 2.5 µg/lane

Lane 2: Non-reduced and non-boiled sample, 2.5 µg/lane

SDS-PAGE - Recombinant Human LIPG protein
(ab188506)

Please note: All products are "FOR RESEARCH USE ONLY. NOT FOR USE IN DIAGNOSTIC PROCEDURES"

Our Abpromise to you: Quality guaranteed and expert technical support

- Replacement or refund for products not performing as stated on the datasheet
- Valid for 12 months from date of delivery
- Response to your inquiry within 24 hours
- We provide support in Chinese, English, French, German, Japanese and Spanish
- Extensive multi-media technical resources to help you
- We investigate all quality concerns to ensure our products perform to the highest standards

If the product does not perform as described on this datasheet, we will offer a refund or replacement. For full details of the Abpromise, please visit <https://www.abcam.com/abpromise> or contact our technical team.

Terms and conditions

- Guarantee only valid for products bought direct from Abcam or one of our authorized distributors