

## Product datasheet

# Recombinant Human Liver Arginase protein (His tag) ab215652

[1 Image](#)

### Description

---

<b>Product name</b>	Recombinant Human Liver Arginase protein (His tag)
<b>Purity</b>	> 95 % SDS-PAGE.
<b>Endotoxin level</b>	< 1.000 Eu/μg
<b>Expression system</b>	Mammalian
<b>Accession</b>	<b><u>P05089</u></b>
<b>Protein length</b>	Full length protein
<b>Animal free</b>	No
<b>Nature</b>	Recombinant
<b>Species</b>	Human
<b>Sequence</b>	MSAKSRTIGIIGAPFSKQPRGGVEEGPTVLRKAGLLEKLLK EQECDVKDY GDLPFADIPNDSPFQVKNPRSVGKASEQLAGKVAEVKK NGRISLVLGGD HSLAIGSISGHARVHPDLGVMVDAHTDINTPLTTTSGNLHG QPVSFLLK ELKGKIPDVPGFSWVTPCISAKDIVYGLRDVDPGEHYLKT LGIKYFSM TEVDRLGIGKVMEETLSYLLGRKKRPIHLSFDVDGLDPSFT PATGTPVVG GLTYREGLYITEEYKTGLLSGLDIMEVNPSLGKTPEEVTRT VNTAVAIT LACFGLAREGNHKPIDYLNPPKHHHHHH
<b>Predicted molecular weight</b>	36 kDa including tags
<b>Amino acids</b>	1 to 322
<b>Tags</b>	His tag C-Terminus

### Specifications

---

Our **Abpromise guarantee** covers the use of **ab215652** in the following tested applications.

The application notes include recommended starting dilutions; optimal dilutions/concentrations should be determined by the end user.

**Applications** SDS-PAGE

**Form** Liquid

## Preparation and Storage

### Stability and Storage

Shipped on Dry Ice. Store at -80°C. Avoid freeze / thaw cycle.

pH: 7.4

Constituents: 0.16% Tris HCl, 0.01% Beta mercaptoethanol, 0.02% Manganese chloride, 0.87% Sodium chloride

0.2 µm filtered solution

## General Info

### Pathway

Nitrogen metabolism; urea cycle; L-ornithine and urea from L-arginine: step 1/1.

### Involvement in disease

Defects in ARG1 are the cause of argininemia (ARGIN) [MIM:207800]; also known as hyperargininemia. Argininemia is a rare autosomal recessive disorder of the urea cycle. Arginine is elevated in the blood and cerebrospinal fluid, and periodic hyperammonemia occurs. Clinical manifestations include developmental delay, seizures, mental retardation, hypotonia, ataxia, progressive spastic quadriplegia.

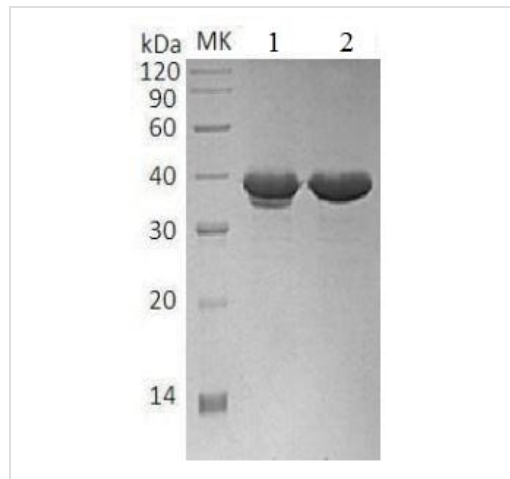
### Sequence similarities

Belongs to the arginase family.

### Cellular localization

Cytoplasm.

## Images



SDS-PAGE analysis of ab215652.

Lane 1: Non-reduced protein

Lane 2: Reduced protein

SDS-PAGE - Recombinant Human Liver Arginase protein (His tag) (ab215652)

**Please note:** All products are "FOR RESEARCH USE ONLY. NOT FOR USE IN DIAGNOSTIC PROCEDURES"

## **Our Abpromise to you: Quality guaranteed and expert technical support**

---

- Replacement or refund for products not performing as stated on the datasheet
- Valid for 12 months from date of delivery
- Response to your inquiry within 24 hours
  
- We provide support in Chinese, English, French, German, Japanese and Spanish
- Extensive multi-media technical resources to help you
- We investigate all quality concerns to ensure our products perform to the highest standards

If the product does not perform as described on this datasheet, we will offer a refund or replacement. For full details of the Abpromise, please visit <https://www.abcam.com/abpromise> or contact our technical team.

## **Terms and conditions**

---

- Guarantee only valid for products bought direct from Abcam or one of our authorized distributors