

## Product datasheet

# Recombinant Human LOX protein (Tagged) ab235010

[1 Image](#)

### Description

<b>Product name</b>	Recombinant Human LOX protein (Tagged)
<b>Purity</b>	> 85 % SDS-PAGE. Affinity purified.
<b>Expression system</b>	Baculovirus infected insect cells
<b>Accession</b>	<b><u>P28300</u></b>
<b>Protein length</b>	Full length protein
<b>Animal free</b>	No
<b>Nature</b>	Recombinant
<b>Species</b>	Human
<b>Sequence</b>	DDPYNPYKYSDDNPYNNYD TYERPRPGGRYRPGYGTGYF QYGLPDLVAD PYYIQASTYVQKMSMYNLRCAAEEENCLASTAYRADVRD YD HRVLLRFPQR VKNQGTSDFLPSRPRYSWEWHSCHQHYHSMDEF SHYDL LDANTQRRVAEG HKASF CLEDTSCDYGYHRRFACTAHTQGLSPGCYDTYGA DIDCQWIDITD VKPGNYILKVSVNPSYLVPESDYTNNVVRCDIRYTGHHAYA SGCTISPY
<b>Predicted molecular weight</b>	73 kDa including tags
<b>Amino acids</b>	169 to 417
<b>Tags</b>	His tag C-Terminus , MBP tag N-Terminus
<b>Additional sequence information</b>	Mature chain without signal peptide, without propeptide. N-terminal MBP-tagged and C-terminal 6xHis-tagged.

### Specifications

Our **Abpromise guarantee** covers the use of **ab235010** in the following tested applications.

The application notes include recommended starting dilutions; optimal dilutions/concentrations should be determined by the end user.

**Applications** SDS-PAGE

**Form** Liquid

## Preparation and Storage

### Stability and Storage

Shipped at 4°C. Store at -20°C or -80°C. Avoid freeze / thaw cycle.

pH: 7.20

Constituents: Tris buffer, 50% Glycerol (glycerin, glycerine)

## General Info

### Function

Responsible for the post-translational oxidative deamination of peptidyl lysine residues in precursors to fibrous collagen and elastin. In addition to cross-linking of extracellular matrix proteins, may have a direct role in tumor suppression.

### Tissue specificity

Heart, placenta, skeletal muscle, kidney, lung and pancreas.

### Involvement in disease

Defects in LOX may be a cause of cutis laxa autosomal recessive type 1 (ARCL1) [MIM:219100].

### Sequence similarities

Belongs to the lysyl oxidase family.

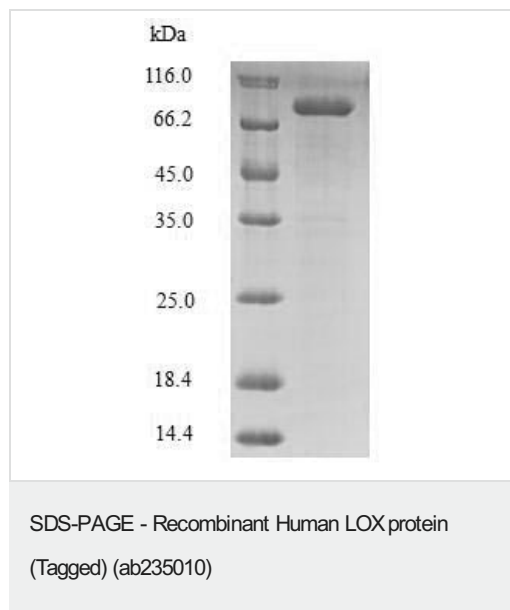
### Post-translational modifications

The lysine tyrosylquinone cross-link (LTQ) is generated by condensation of the epsilon-amino group of a lysine with a topaquinone produced by oxidation of tyrosine.

### Cellular localization

Secreted > extracellular space.

## Images



ab235010 analyzed by (Tris-Glycine gel) discontinuous SDS-PAGE (reduced) with 5% enrichment gel and 15% separation gel.

**Please note:** All products are "FOR RESEARCH USE ONLY. NOT FOR USE IN DIAGNOSTIC PROCEDURES"

## Our Abpromise to you: Quality guaranteed and expert technical support

- Replacement or refund for products not performing as stated on the datasheet
- Valid for 12 months from date of delivery
- Response to your inquiry within 24 hours

- We provide support in Chinese, English, French, German, Japanese and Spanish
- Extensive multi-media technical resources to help you
- We investigate all quality concerns to ensure our products perform to the highest standards

If the product does not perform as described on this datasheet, we will offer a refund or replacement. For full details of the Abpromise, please visit <https://www.abcam.com/abpromise> or contact our technical team.

#### **Terms and conditions**

---

- Guarantee only valid for products bought direct from Abcam or one of our authorized distributors