

Product datasheet

Recombinant Human Lumican protein (His tag)
ab221400

1 Image

Description	
Product name	Recombinant Human Lumican protein (His tag)
Purity	> 95 % SDS-PAGE.
Endotoxin level	< 1.000 Eu/µg
Expression system	HEK 293 cells
Accession	<u>P51884</u>
Protein length	Full length protein
Animal free	No
Nature	Recombinant
Species	Human
Sequence	QYYDYDFPLSIYQSSPNCAPCECNCPEYSAMYCDELKL KSVPMVPPGI KYLYLRNNQIDHIDEKAFENVTDLQWLILDHNLLENSKIKGR VFSKCLKQL KKLHINHNNLTESVGPLPKSLEDLQLTHNKITKLGSFEGLV NLTFIHLQH NRLKEDAVSAAFKGLKSLEYLDLSFNQIARLP SGLPVSLLT LYLDNNKIS NIPDEYFKRFNALQYLRLSHNELADSGIPGNSFNVSSLVEL DLSYNKLKN IPTVNENLENYYLEVNQLEKFDIKSFCKILGPLSYSKIKHLRL DGNRISE TSLPPDMYECLRVANEVTLN
Predicted molecular weight	38 kDa including tags
Amino acids	19 to 338
Tags	His tag C-Terminus
Additional sequence information	Mature protein without signal peptide.

Specifications

Our **Abpromise guarantee** covers the use of **ab221400** in the following tested applications.

The application notes include recommended starting dilutions; optimal dilutions/concentrations should be determined by the end user.

Applications SDS-PAGE

Form Lyophilized

Preparation and Storage

Stability and Storage Shipped at 4°C. Store at -80°C. Avoid freeze / thaw cycle.

pH: 7.40

Constituents: PBS, 5% Trehalose

Reconstitution Reconstitute with sterile deionized water to a concentration of 200 µg/ml.

General Info

Tissue specificity Cornea and other tissues.

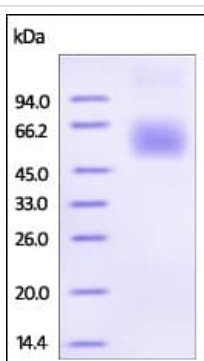
Sequence similarities Belongs to the small leucine-rich proteoglycan (SLRP) family. SLRP class II subfamily.
Contains 11 LRR (leucine-rich) repeats.
Contains 1 LRRNT domain.

Developmental stage Present in the extracellular matrix of human articular cartilage at all ages, although its abundance is far greater in the adult. In the adult cartilage lumican exists predominantly in a glycoprotein form lacking keratan sulfate, whereas the juvenile form of the molecule is a proteoglycan.

Post-translational modifications Sulfated on tyrosine residue(s).

Cellular localization Secreted > extracellular space > extracellular matrix.

Images



SDS-PAGE - Recombinant Human Lumican protein
(His tag) (ab221400)

SDS-PAGE using ab221400. DTT-reduced protein migrates as 50-65 kDa due to glycosylation.

Please note: All products are "FOR RESEARCH USE ONLY. NOT FOR USE IN DIAGNOSTIC PROCEDURES"

Our Abpromise to you: Quality guaranteed and expert technical support

- Replacement or refund for products not performing as stated on the datasheet
- Valid for 12 months from date of delivery
- Response to your inquiry within 24 hours
- We provide support in Chinese, English, French, German, Japanese and Spanish
- Extensive multi-media technical resources to help you
- We investigate all quality concerns to ensure our products perform to the highest standards

If the product does not perform as described on this datasheet, we will offer a refund or replacement. For full details of the Abpromise, please visit <https://www.abcam.com/abpromise> or contact our technical team.

Terms and conditions

- Guarantee only valid for products bought direct from Abcam or one of our authorized distributors