

## Product datasheet

# Recombinant Human M6PR (cation dependent) protein ab80157

[1 Image](#)

### Description

---

<b>Product name</b>	Recombinant Human M6PR (cation dependent) protein
<b>Purity</b>	> 90 % SDS-PAGE.
<b>Expression system</b>	Escherichia coli
<b>Protein length</b>	Protein fragment
<b>Animal free</b>	No
<b>Nature</b>	Recombinant
<b>Species</b>	Human
<b>Sequence</b>	MFPFYSCWRTGLLLLLLAVAVRESWQTEEKTCDLVGEKG KESEKELALVK RLKPLFNKSF
<b>Amino acids</b>	1 to 60

### Specifications

---

Our **Abpromise guarantee** covers the use of **ab80157** in the following tested applications.

The application notes include recommended starting dilutions; optimal dilutions/concentrations should be determined by the end user.

<b>Applications</b>	Western blot ELISA SDS-PAGE
<b>Form</b>	Lyophilized

### Preparation and Storage

---

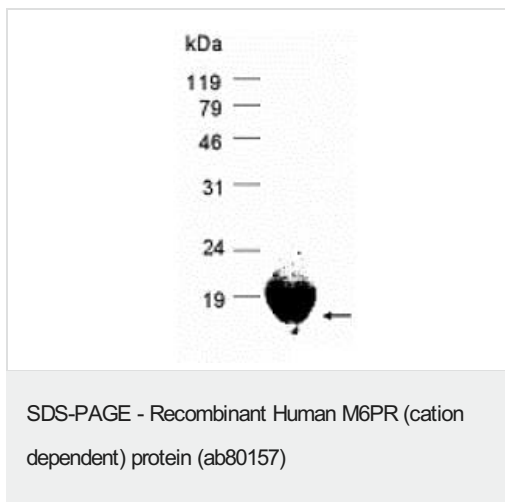
<b>Stability and Storage</b>	Shipped at 4°C. Upon delivery aliquot and store at -20°C. Avoid freeze / thaw cycles. Constituent: PBS
<b>Reconstitution</b>	Redissolve the powder with 1ml sterile water will restore to the original concentration 1mg/ml.

### General Info

---

<b>Function</b>	Transport of phosphorylated lysosomal enzymes from the Golgi complex and the cell surface to lysosomes. Lysosomal enzymes bearing phosphomannosyl residues bind specifically to mannose-6-phosphate receptors in the Golgi apparatus and the resulting receptor-ligand complex is transported to an acidic prelysosomal compartment where the low pH mediates the dissociation of the complex.
<b>Domain</b>	The extracellular domain is homologous to the repeating units (of approximately 147 AA) of the cation-independent mannose 6-phosphate receptor.
<b>Cellular localization</b>	Lysosome membrane.

## Images



20% SDS PAGE showing ab80157 at approximately 12 kDa.

**Please note:** All products are "FOR RESEARCH USE ONLY. NOT FOR USE IN DIAGNOSTIC PROCEDURES"

## Our Abpromise to you: Quality guaranteed and expert technical support

- Replacement or refund for products not performing as stated on the datasheet
- Valid for 12 months from date of delivery
- Response to your inquiry within 24 hours
- We provide support in Chinese, English, French, German, Japanese and Spanish
- Extensive multi-media technical resources to help you
- We investigate all quality concerns to ensure our products perform to the highest standards

If the product does not perform as described on this datasheet, we will offer a refund or replacement. For full details of the Abpromise, please visit <https://www.abcam.com/abpromise> or contact our technical team.

## Terms and conditions

- Guarantee only valid for products bought direct from Abcam or one of our authorized distributors