

## Product datasheet

# Recombinant Human MAdCAM1 protein (His tag) ab267851

[3 Images](#)

### Description

---

<b>Product name</b>	Recombinant Human MAdCAM1 protein (His tag)
<b>Purity</b>	> 85 % SDS-PAGE.
<b>Expression system</b>	Mammalian
<b>Accession</b>	<u><a href="#">Q13477</a></u>
<b>Protein length</b>	Protein fragment
<b>Animal free</b>	No
<b>Nature</b>	Recombinant
<b>Species</b>	Human
<b>Sequence</b>	QSLQVKPLQVEPEPVAVALGASRQLTCRLACADRGASVQWRGLDTSLGAVQSDTGRSVLTVRNASLSAAGTRVCVGCSCGGRTFQHTVQLLVYAFPDQLTVSPAALVPGDPEVACTAHKVTPVDPNALSFSLLVGGQELEGAQALGPEVQEEEEEPQGDEDVLFVRVTERWRLPPLGTPVPPALYCQATMRLPGLLELSHRQAIPVLHSPTSPEPPDTTSPESPDTTSPESPDTTSQEPPDTTSPPEPKTSPEPAPQQGSTHTPRSPGSTRTRRPEISQAGPTQGEVIPTGSSKPAGDQ
<b>Predicted molecular weight</b>	40 kDa
<b>Amino acids</b>	19 to 317
<b>Tags</b>	His tag N-Terminus
<b>Additional sequence information</b>	Extracellular Domain

### Specifications

---

Our **Abpromise guarantee** covers the use of **ab267851** in the following tested applications.

The application notes include recommended starting dilutions; optimal dilutions/concentrations should be determined by the end user.

<b>Applications</b>	SDS-PAGE Mass Spectrometry
<b>Mass spectrometry</b>	LC-MS/MS
<b>Form</b>	Liquid

---

## Preparation and Storage

<b>Stability and Storage</b>	Shipped at 4°C. Store at +4°C short term (1-2 weeks). Upon delivery aliquot. Store at -20°C or -80°C. Avoid freeze / thaw cycle. Constituents: PBS, 6% Trehalose  Lyophilized from.
------------------------------	--

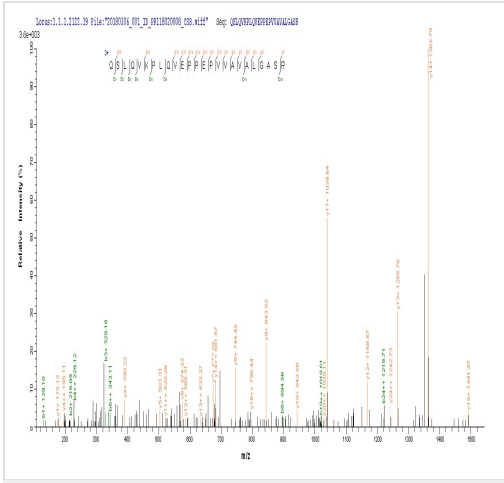
---

## General Info

<b>Function</b>	Cell adhesion leukocyte receptor expressed by mucosal venules, helps to direct lymphocyte traffic into mucosal tissues including the Peyer patches and the intestinal lamina propria. It can bind both integrin alpha-4/beta-7 and L-selectin, regulating both the passage and retention of leukocytes. Isoform 2, lacking the mucin-like domain, may be specialized in supporting integrin alpha-4/beta-7-dependent adhesion strengthening, independent of L-selectin binding.
<b>Tissue specificity</b>	Highly expressed on high endothelial venules (HEV) and lamina propria venules found in the small intestine, and to a lesser extent in the colon and spleen. Very low levels of expression found in pancreas and brain. Not expressed in the thymus, prostate, ovaries, testis, heart, placenta, lung, liver, skeletal muscle, kidney or peripheral blood leukocytes.
<b>Sequence similarities</b>	Contains 2 Ig-like (immunoglobulin-like) domains.
<b>Post-translational modifications</b>	The Ser/Thr-rich mucin-like domain may provide possible sites for O-glycosylation.
<b>Cellular localization</b>	Membrane.

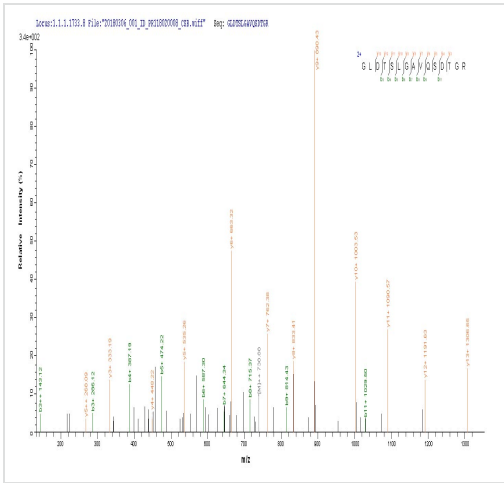
---

## Images



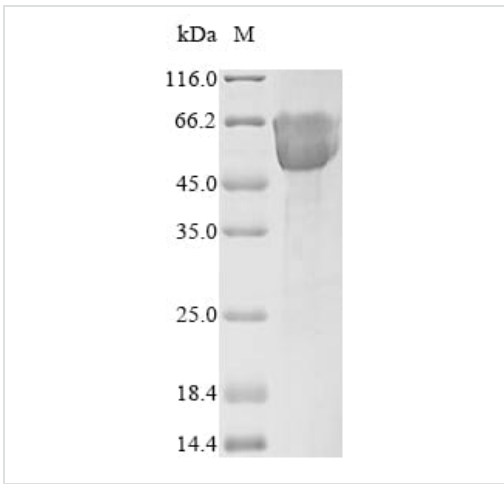
Mass Spectrometry - Recombinant Human  
MAdCAM1 protein (His tag) (ab267851)

Based on the SEQUEST from database of Mammalian Cell host and target protein, the LC-MS/MS Analysis result of ab267851 could indicate that this peptide derived from Mammalian Cell-expressed Homo sapiens (Human) MAdCAM1.



Mass Spectrometry - Recombinant Human  
MAdCAM1 protein (His tag) (ab267851)

Based on the SEQUEST from database of Mammalian Cell host and target protein, the LC-MS/MS Analysis result of ab267851 could indicate that this peptide derived from Mammalian Cell-expressed Homo sapiens (Human) MAdCAM1.



SDS-PAGE - Recombinant Human MAdCAM1  
protein (His tag) (ab267851)

SDS-PAGE analysis of recombinant human MAdCAM1 protein (His tag) (ab267851)

**Please note:** All products are "FOR RESEARCH USE ONLY. NOT FOR USE IN DIAGNOSTIC PROCEDURES"

### **Our Abpromise to you: Quality guaranteed and expert technical support**

---

- Replacement or refund for products not performing as stated on the datasheet
- Valid for 12 months from date of delivery
- Response to your inquiry within 24 hours
  
- We provide support in Chinese, English, French, German, Japanese and Spanish
- Extensive multi-media technical resources to help you
- We investigate all quality concerns to ensure our products perform to the highest standards

If the product does not perform as described on this datasheet, we will offer a refund or replacement. For full details of the Abpromise, please visit <https://www.abcam.com/abpromise> or contact our technical team.

### **Terms and conditions**

---

- Guarantee only valid for products bought direct from Abcam or one of our authorized distributors