

## Product datasheet

# Recombinant Human Mannan Binding Lectin/MBL protein (His tag) ab229367

[1 Image](#)

### Description

|  |   |  |
|--|---|--|
| <b>Product name</b>                    | Recombinant Human Mannan Binding Lectin/MBL protein (His tag)   |  |
| <b>Purity</b>                          | > 90 % SDS-PAGE.<br>Affinity purified   |  |
| <b>Endotoxin level</b>                 | < 1.000 Eu/μg   |  |
| <b>Expression system</b>               | Baculovirus infected insect cells   |  |
| <b>Accession</b>                       | <b><u>P11226</u></b>  |  |
| <b>Protein length</b>                  | Full length protein   |  |
| <b>Animal free</b>                     | No  |  |
| <b>Nature</b>                          | Recombinant   |  |
| <b>Species</b>                         | Human   |  |
| <b>Sequence</b>                        | ADPETVTCED AQKTCPAVIA CSSPGINGFP<br>GKDGRDGTKG EKGEPGQGLR GLQGPPGKLG<br>PPGNPGPSGS PGPKGQKGDG GKSPDGDSSL<br>AASERKALQT EMARIKKWLT FSLGKQVGNK<br>FFLTNGEIMT FEKVKALCVK FQASVATPRN<br>AAENGAIQNL IKEEAFLGIT DEKTEGQFVD LTGNRLTYTN<br>WNEGEPNNAG SDEDCVLLLK NGQWNDVPCS<br>TSHLAVCEFP IHHHHHH |  |
| <b>Predicted molecular weight</b>      | 25 kDa including tags   |  |
| <b>Amino acids</b>                     | 21 to 248   |  |
| <b>Tags</b>                            | His tag C-Terminus  |  |
| <b>Additional sequence information</b> | Full length mature chain without signal peptide.  |  |

### Specifications

Our **Abpromise guarantee** covers the use of **ab229367** in the following tested applications.

The application notes include recommended starting dilutions; optimal dilutions/concentrations should be determined by the end user.

**Applications** SDS-PAGE

**Form** Liquid

**Additional notes**

This product was previously labelled as Mannan Binding Lectin

**Preparation and Storage**

**Stability and Storage**

Shipped at 4°C. Store at +4°C short term (1-2 weeks). Upon delivery aliquot. Store at -20°C or -80°C. Avoid freeze / thaw cycle.  
  
pH: 7.40  
Constituents: PBS, 10% Glycerol (glycerin, glycerine)

**General Info**

**Function**

Calcium-dependent lectin involved in innate immune defense. Binds mannose, fucose and N-acetylglucosamine on different microorganisms and activates the lectin complement pathway. Binds to late apoptotic cells, as well as to apoptotic blebs and to necrotic cells, but not to early apoptotic cells, facilitating their uptake by macrophages. May bind DNA.

**Tissue specificity**

Plasma protein produced mainly in the liver.

**Involvement in disease**

Note=There is an association between low levels of MBL2 and a defect of opsonization which results in susceptibility to frequent and chronic infections.

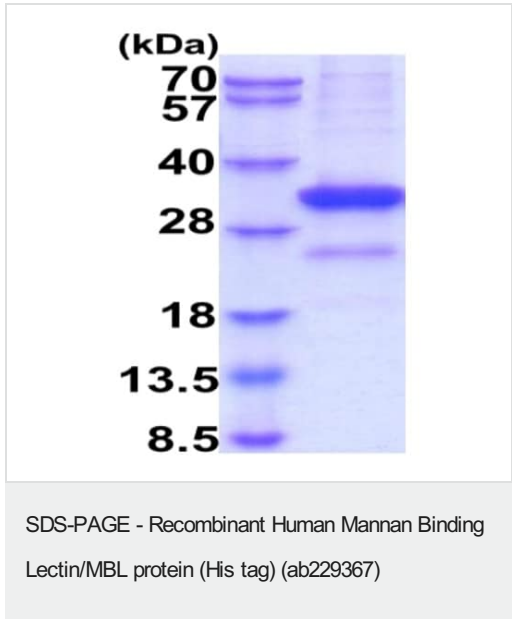
**Sequence similarities**

Contains 1 C-type lectin domain.  
Contains 1 collagen-like domain.

**Cellular localization**

Secreted.

**Images**



15% SDS-PAGE analysis of 3 µg Recombinant Human Mannan Binding Lectin/MBL protein (His tag) (ab229367).

**Please note:** All products are "FOR RESEARCH USE ONLY. NOT FOR USE IN DIAGNOSTIC PROCEDURES"

### **Our Abpromise to you: Quality guaranteed and expert technical support**

---

- Replacement or refund for products not performing as stated on the datasheet
- Valid for 12 months from date of delivery
- Response to your inquiry within 24 hours
  
- We provide support in Chinese, English, French, German, Japanese and Spanish
- Extensive multi-media technical resources to help you
- We investigate all quality concerns to ensure our products perform to the highest standards

If the product does not perform as described on this datasheet, we will offer a refund or replacement. For full details of the Abpromise, please visit <https://www.abcam.com/abpromise> or contact our technical team.

### **Terms and conditions**

---

- Guarantee only valid for products bought direct from Abcam or one of our authorized distributors