

Product datasheet

Recombinant Human MAP2K1IP1 protein ab102022

1 Image

Description

Product name	Recombinant Human MAP2K1IP1 protein
Purity	> 95 % SDS-PAGE. ab102022 was purified using conventional chromatography techniques.
Expression system	Escherichia coli
Accession	<u>Q9UHA4</u>
Protein length	Full length protein
Animal free	No
Nature	Recombinant
Species	Human
Sequence	MGSSHHHHHSSGLVPRGSHMADDLKRFLYKKLPSVE GLHAMVSDRDGV PVIKVANDNAPEHALRPGFLSTFALATDQGSKLGLSKNKS ICYNTYQV VQFNRLPLVVFSFIASSANTGLMSLEKELAPLFEELRQVV EVS
Predicted molecular weight	16 kDa including tags
Amino acids	1 to 124
Tags	His tag N-Terminus

Specifications

Our **Abpromise guarantee** covers the use of **ab102022** in the following tested applications.

The application notes include recommended starting dilutions; optimal dilutions/concentrations should be determined by the end user.

Applications	SDS-PAGE Mass Spectrometry
Mass spectrometry	MALDI-TOF
Form	Liquid

Preparation and Storage

Stability and Storage Shipped at 4°C. Upon delivery aliquot and store at -20°C or -80°C. Avoid repeated freeze / thaw

cycles.

pH: 8.00

Constituents: 0.077% DTT, 0.316% Tris HCl, 20% Glycerol (glycerin, glycerine), 0.58% Sodium chloride

General Info

Function

As part of the Ragulator complex it is involved in amino acid sensing and activation of mTORC1, a signaling complex promoting cell growth in response to growth factors, energy levels, and amino acids. Activated by amino acids through a mechanism involving the lysosomal V-ATPase, the Ragulator functions as a guanine nucleotide exchange factor activating the small GTPases Rag. Activated Ragulator and Rag GTPases function as a scaffold recruiting mTORC1 to lysosomes where it is in turn activated. Adapter protein that enhances the efficiency of the MAP kinase cascade facilitating the activation of MAPK2.

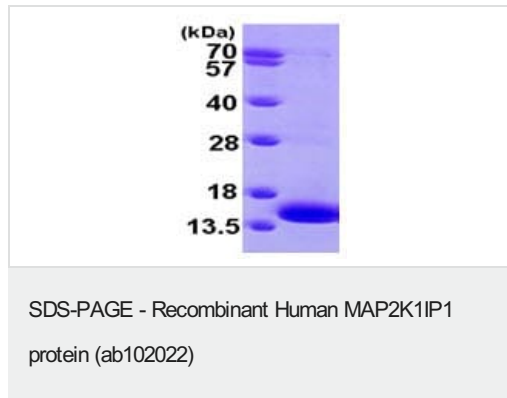
Sequence similarities

Belongs to the LAMTOR3 family.

Cellular localization

Late endosome membrane.

Images



15% SDS-PAGE analysis of 3µg ab102022.

Please note: All products are "FOR RESEARCH USE ONLY. NOT FOR USE IN DIAGNOSTIC PROCEDURES"

Our Abpromise to you: Quality guaranteed and expert technical support

- Replacement or refund for products not performing as stated on the datasheet
- Valid for 12 months from date of delivery
- Response to your inquiry within 24 hours
- We provide support in Chinese, English, French, German, Japanese and Spanish
- Extensive multi-media technical resources to help you
- We investigate all quality concerns to ensure our products perform to the highest standards

If the product does not perform as described on this datasheet, we will offer a refund or replacement. For full details of the Abpromise, please visit <https://www.abcam.com/abpromise> or contact our technical team.

Terms and conditions

- Guarantee only valid for products bought direct from Abcam or one of our authorized distributors