

Product datasheet

Recombinant human MAP4K5 protein ab56636

[4 Images](#)

Description

Product name	Recombinant human MAP4K5 protein
Biological activity	Specific activity: 86 nm/min/mg.
Purity	> 75 % Densitometry. Affinity purified.
Expression system	Baculovirus infected Sf9 cells
Protein length	Full length protein
Animal free	No
Nature	Recombinant
Species	Human

Specifications

Our **Abpromise guarantee** covers the use of **ab56636** in the following tested applications.

The application notes include recommended starting dilutions; optimal dilutions/concentrations should be determined by the end user.

Applications	Functional Studies SDS-PAGE
Form	Liquid
Additional notes	ab64311 (Myelin Basic Protein protein) can be utilized as a substrate for assessing kinase activity.

Preparation and Storage

Stability and Storage	Shipped on dry ice. Upon delivery aliquot and store at -80°C. Avoid freeze / thaw cycles. pH: 7.50 Constituents: 0.0038% EGTA, 0.00174% PMSF, 0.00385% DTT, 0.79% Tris HCl, 0.00292% EDTA, 25% Glycerol (glycerin, glycerine), 0.87% Sodium chloride This product is an active protein and may elicit a biological response in vivo, handle with caution.
------------------------------	--

General Info

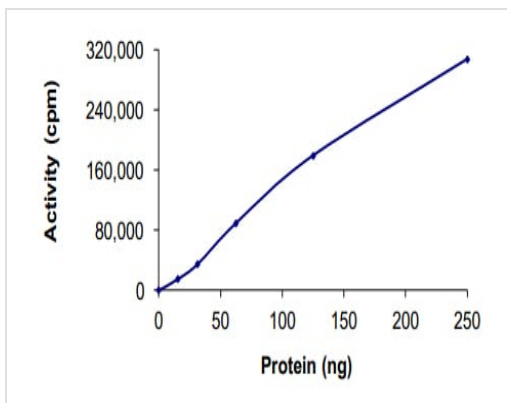
Relevance

MAP4K5, a member of the STE20 subfamily of Ser/Thr protein kinases, may play a role in the response to environmental stress. It appears to act upstream of the JUN N-terminal pathway. MAP4K5 interacts with both SH3 domains of the adapter proteins CRK and CRKL. This cytoplasmic protein is ubiquitously expressed in all tissues examined, with high levels in the ovary, testis and prostate.

Cellular localization

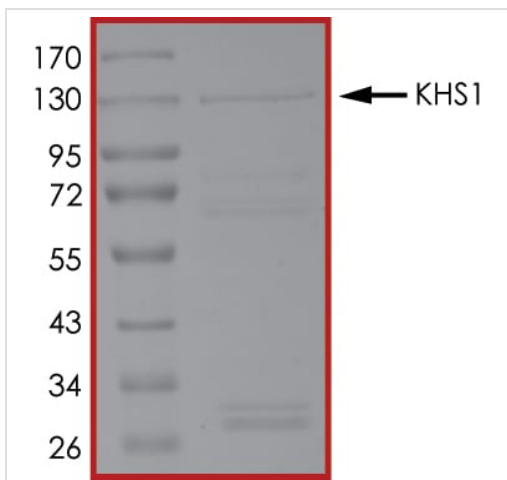
Cytoplasmic

Images



The specific activity of MAP4K5 (ab56636) was determined to be 75 nmol/min/mg as per activity assay protocol

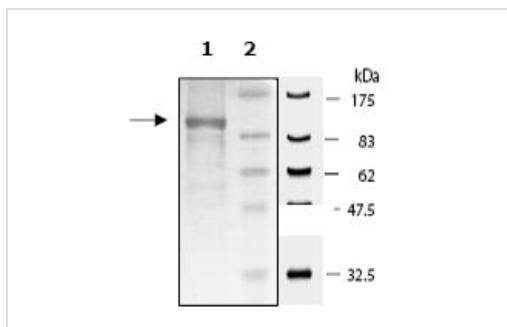
Functional Studies - Recombinant human MAP4K5 protein (ab56636)



SDS PAGE analysis of ab56636

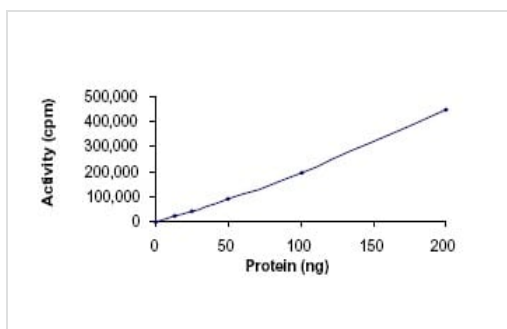
SDS-PAGE - Recombinant human MAP4K5 protein (ab56636)

SDS Page analysis of ab56636



SDS-PAGE - Recombinant human MAP4K5 protein (ab56636)

Kinase Assay using Myelin Base protein as the substrate. Specific Activity: 86 nmol/min/mg.



Functional Studies - Recombinant human MAP4K5 protein (ab56636)

Please note: All products are "FOR RESEARCH USE ONLY. NOT FOR USE IN DIAGNOSTIC PROCEDURES"

Our Abpromise to you: Quality guaranteed and expert technical support

- Replacement or refund for products not performing as stated on the datasheet
- Valid for 12 months from date of delivery
- Response to your inquiry within 24 hours
- We provide support in Chinese, English, French, German, Japanese and Spanish
- Extensive multi-media technical resources to help you
- We investigate all quality concerns to ensure our products perform to the highest standards

If the product does not perform as described on this datasheet, we will offer a refund or replacement. For full details of the Abpromise, please visit <https://www.abcam.com/abpromise> or contact our technical team.

Terms and conditions

- Guarantee only valid for products bought direct from Abcam or one of our authorized distributors