

## Product datasheet

# Recombinant human MAP4K6 protein ab55712

[4 Images](#)

### Description

---

<b>Product name</b>	Recombinant human MAP4K6 protein
<b>Biological activity</b>	Specific Activity: 19 nmol/min/mg
<b>Purity</b>	> 90 % Densitometry. Affinity purified.
<b>Expression system</b>	Baculovirus infected Sf9 cells
<b>Protein length</b>	Protein fragment
<b>Animal free</b>	No
<b>Nature</b>	Recombinant
<b>Species</b>	Human
<b>Amino acids</b>	1 to 320

### Specifications

---

Our **Abpromise guarantee** covers the use of **ab55712** in the following tested applications.

The application notes include recommended starting dilutions; optimal dilutions/concentrations should be determined by the end user.

<b>Applications</b>	Functional Studies SDS-PAGE
<b>Form</b>	Liquid
<b>Additional notes</b>	<b>ab43614</b> (Human Myelin Basic Protein full length protein) can be utilized as a substrate for assessing Kinase activity

### Preparation and Storage

---

<b>Stability and Storage</b>	Shipped on dry ice. Upon delivery aliquot and store at -80°C. Avoid freeze / thaw cycles. pH: 7.50 Constituents: 0.0038% EGTA, 0.00174% PMSF, 0.00385% DTT, 0.79% Tris HCl, 0.00292% EDTA, 25% Glycerol (glycerin, glycerine), 0.87% Sodium chloride This product is an active protein and may elicit a biological response in vivo, handle with caution.
------------------------------	--

## General Info

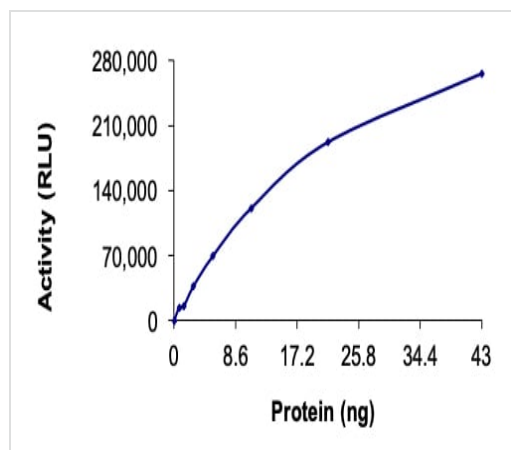
### Relevance

MAP4K6 is a serine/threonine kinase belonging to the germinal center kinase (GCK) family. These kinases regulate a wide variety of cellular processes by coupling cell surface receptors to MAPK pathways. This kinase appears to act upstream of the JUN N-terminal pathway and may be involved in brain development. It may also play a role in the response to environmental stress, in cytoskeleton reorganization, cell adhesion, and cell motility. Alternative splicing occurs at this locus and four transcript variants encoding distinct isoforms have been identified.

### Cellular localization

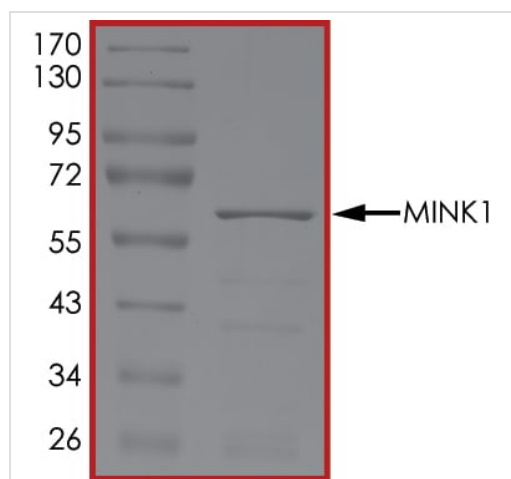
Cytoplasm. Cell junction; synapse; postsynaptic cell membrane; postsynaptic density. Cell projection; axon. Cell projection; dendrite. Isoform 4: Golgi apparatus

## Images



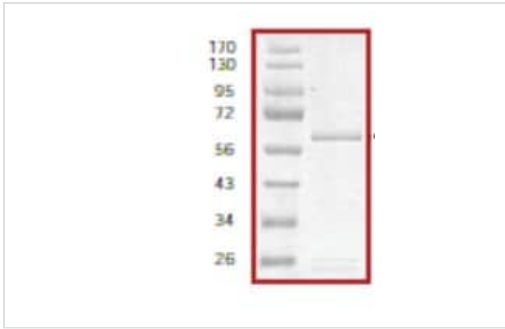
The specific activity of MAP4K6 (ab55712) was determined to be 22 nmol/min/mg as per activity assay protocol and was equivalent to 22 nmol/min/mg as per radiometric assay

Functional Studies - Recombinant human MAP4K6 protein (ab55712)



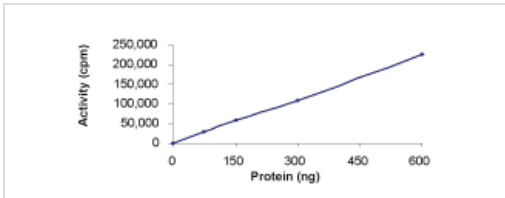
SDS PAGE analysis of ab55712

SDS-PAGE - Recombinant human MAP4K6 protein (ab55712)



SDS-PAGE analysis of ab55712 with molecular weight markers.  
Approximate molecular weight 61kDa.

SDS-PAGE - Recombinant human MAP4K6 protein  
(ab55712)



Kinase assay using ab55712. Specific activity: 19 nmol/min/mg.

Functional Studies - Recombinant human MAP4K6  
protein (ab55712)

**Please note:** All products are "FOR RESEARCH USE ONLY. NOT FOR USE IN DIAGNOSTIC PROCEDURES"

### Our Abpromise to you: Quality guaranteed and expert technical support

- Replacement or refund for products not performing as stated on the datasheet
- Valid for 12 months from date of delivery
- Response to your inquiry within 24 hours
- We provide support in Chinese, English, French, German, Japanese and Spanish
- Extensive multi-media technical resources to help you
- We investigate all quality concerns to ensure our products perform to the highest standards

If the product does not perform as described on this datasheet, we will offer a refund or replacement. For full details of the Abpromise, please visit <https://www.abcam.com/abpromise> or contact our technical team.

### Terms and conditions

- Guarantee only valid for products bought direct from Abcam or one of our authorized distributors