

Product datasheet

Recombinant human MCP1 protein (Active) ab270081

[5 Images](#)

Description

Product name	Recombinant human MCP1 protein (Active)
Biological activity	Fully biologically active determined by the dose dependent migration of human PBMCs or THP-1 monocytes. ED ₅₀ is ≤10-50 ng/ml, corresponding to a specific activity of 0.1-0.02 x 10 ⁶ units/mg.
Purity	≥ 95 % SDS-PAGE. =95% by HPLC
Endotoxin level	≤0.005 Eu/μg
Expression system	HEK 293 cells
Accession	<u>P13500</u>
Protein length	Full length protein
Animal free	Yes
Carrier free	Yes
Nature	Recombinant
Species	Human
Sequence	QPDAINAPVT CCYNFTNRKI SVQRLASYRR ITSSKCPKEA VIFKTIVAKE ICADPKQKWV QDSMDHLDKQ TQTPKT
Predicted molecular weight	9 kDa
Actual molecular weight	9 kDa
Molecular weight information	Predicted mass is 8742.08 Da (+/- 10 Da by ESI TOF). Observed mass is 8742 Da.
Amino acids	24 to 99
Additional sequence information	N-terminal glycine. Full-length mature chain lacking the signal peptide.

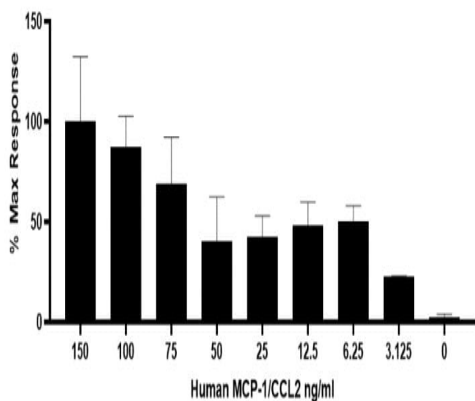
Specifications

Our **Abpromise guarantee** covers the use of **ab270081** in the following tested applications.

The application notes include recommended starting dilutions; optimal dilutions/concentrations should be determined by the end user.

Applications	Sandwich ELISA
	Cell Culture
	SDS-PAGE

	Functional Studies
	Mass Spectrometry
	HPLC
Form	Lyophilized
Preparation and Storage	
Stability and Storage	<p>Shipped at Room Temperature. Store at Room Temperature.</p> <p>Constituents: 0.727% Dibasic monohydrogen potassium phosphate, 0.248% Monobasic dihydrogen potassium phosphate, 10.26% Trehalose</p> <p>This product is an active protein and may elicit a biological response in vivo, handle with caution.</p>
Reconstitution	<p>Reconstitute with phosphate buffered saline. Store lyophilized form at room temperature.</p> <p>Reconstitute, aliquot and store at -80°C for 12 months or +4°C for 1 week. Avoid repeated freeze-thaw. Lyophilized contents may appear as either a translucent film or a white powder. This variance does not affect the quality of the product. Lyophilized contents may appear as either a translucent film or a white powder. This variance does not affect the quality of the product.</p>
General Info	
Function	<p>Chemotactic factor that attracts monocytes and basophils but not neutrophils or eosinophils.</p> <p>Augments monocyte anti-tumor activity. Has been implicated in the pathogenesis of diseases characterized by monocytic infiltrates, like psoriasis, rheumatoid arthritis or atherosclerosis. May be involved in the recruitment of monocytes into the arterial wall during the disease process of atherosclerosis.</p>
Sequence similarities	Belongs to the intercrine beta (chemokine CC) family.
Post-translational modifications	Processing at the N-terminus can regulate receptor and target cell selectivity. Deletion of the N-terminal residue converts it from an activator of basophil to an eosinophil chemoattractant.
Cellular localization	Secreted.
Images	



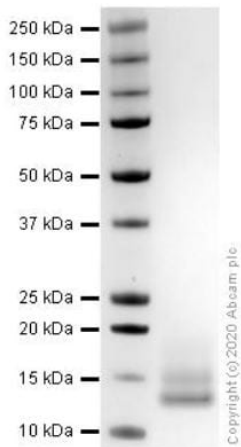
Functional Studies - Recombinant human MCP1 protein (ab270081)

Fully biologically active determined by the dose dependent migration of human PBMCs or THP-1 monocytes.

ED₅₀ is ≤10-50 ng/ml, corresponding to a specific activity of 0.1-0.02 x 10⁶ units/mg.

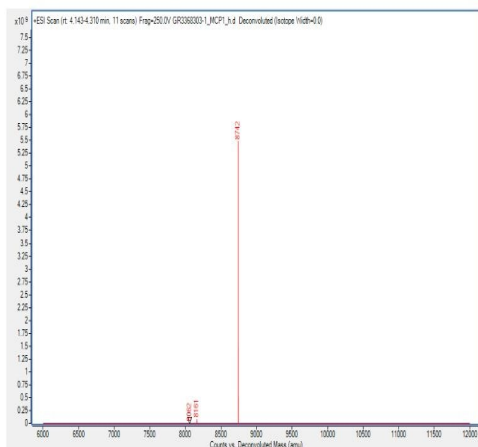
Cell based assay testing is performed on the first lot of protein only and is provided as a reference for protein activity; subsequent lots of protein must pass all biophysical quality control parameters that meet the same parameters as the first lot.

Lot: GR3368303-1



SDS-PAGE - Recombinant human MCP1 protein (ab270081)

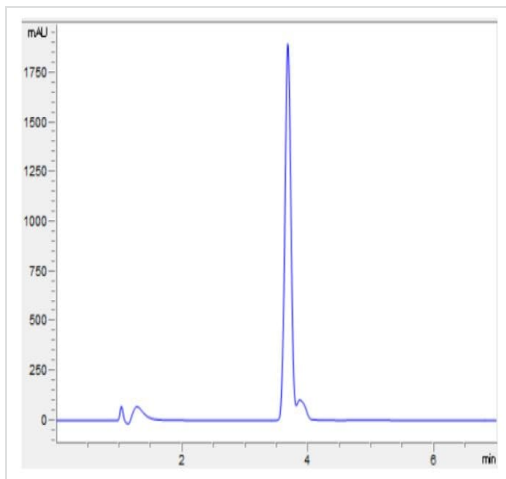
SDS-PAGE analysis of ab270081.



Mass Spectrometry - Recombinant human MCP1 protein (ab270081)

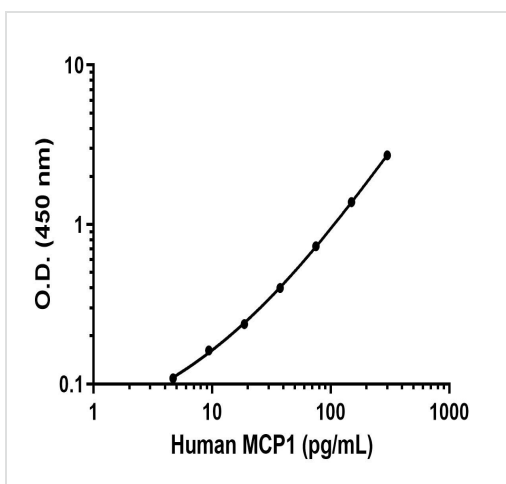
Mass determination by ESI TOF.

Predicted mass is 8742.08 Da (+/- 10 Da by ESI TOF). Observed mass is 8742 Da.



HPLC - Recombinant human MCP1 protein
(ab270081)

HPLC analysis of ab270081.



Sandwich ELISA - Recombinant human MCP1
protein (Active) (ab270081)

Background subtracted standard curve using Human MCP1
Antibody Pair - BSA and Azide free (**ab241803**) and Recombinant
human MCP1 protein (Active) (ab270081) in sandwich ELISA.
The ELISA was performed using the components of the
corresponding SimpleStep® kit, which uses the same antibody pair
with a different formulation and format.

Please note: All products are "FOR RESEARCH USE ONLY. NOT FOR USE IN DIAGNOSTIC PROCEDURES"

Our Abpromise to you: Quality guaranteed and expert technical support

- Replacement or refund for products not performing as stated on the datasheet
- Valid for 12 months from date of delivery
- Response to your inquiry within 24 hours
- We provide support in Chinese, English, French, German, Japanese and Spanish
- Extensive multi-media technical resources to help you
- We investigate all quality concerns to ensure our products perform to the highest standards

If the product does not perform as described on this datasheet, we will offer a refund or replacement. For full details of the Abpromise, please visit <https://www.abcam.com/abpromise> or contact our technical team.

Terms and conditions

- Guarantee only valid for products bought direct from Abcam or one of our authorized distributors