

Product datasheet

Recombinant Human MCT1/Monocarboxylic acid transporter 1 protein ab152689

[1 Image](#)

Description

Product name	Recombinant Human MCT1/Monocarboxylic acid transporter 1 protein
Expression system	Wheat germ
Accession	<u>P53985</u>
Protein length	Full length protein
Animal free	No
Nature	Recombinant
Species	Human
Sequence	MPPAVGGPVGYTTPDGGGWAVVIGAFISIGFSYAFPKSI TVFFKEIEGI FHATTSEVSWISSIMLAVMYGGGPISSILVNKYGSRIVMVG GCLSGCGL IAASFCNTVQQLYVCIGVIGGLGLAFNLPALTMIGKYFYKR RPLANGLA MAGSPVFLCTLAPLNQVFFGIFGWGRSFLILGLLLLNCCV AGALMRPIGP KPTKAGKDKSKASLEKAGKSGVKKDLHDANTDLIGRHPK QEKRSVFQTIN QFLDLTLFTHRGFLLYLSGNVIMFFGLFAPLVFLSSYGKSQ HYSSEKSAF LLSILAFVDMVARPSMGLVANTKPIRPRIQYFFAASVVANG VCHMLAPLS TTYVGFCVYAGFFGFAGWLSSVLFETLMDLVGPQRFSS AVGLVTVECC PVLLGPPLLGRLNDMYGDYKYTYWACGVVLIISGYLFIGMGI NYRLLAK EQKANEQKESKEEETSIDVAGKPNEVTKAAESPDQKDT EGGPKEEESPV
Predicted molecular weight	80 kDa
Amino acids	1 to 500

Specifications

Our **Abpromise guarantee** covers the use of **ab152689** in the following tested applications.

The application notes include recommended starting dilutions; optimal dilutions/concentrations should be determined by the end user.

Applications	Western blot ELISA SDS-PAGE
Form	Liquid
Additional notes	Protein corresponds to variant rs1049434 with D-E substitution at position 490.

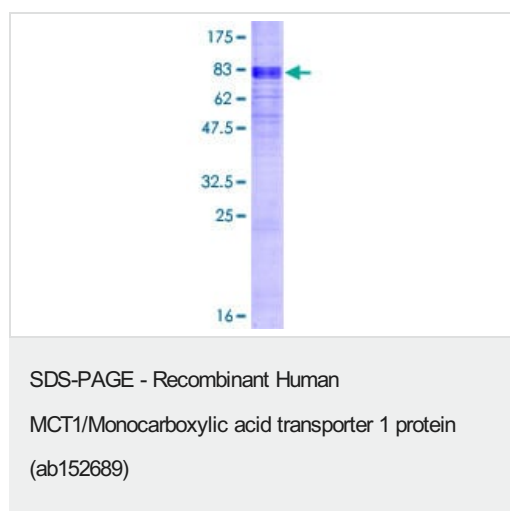
Preparation and Storage

Stability and Storage	Shipped on dry ice. Upon delivery aliquot and store at -80°C. Avoid freeze / thaw cycles. pH: 8.00 Constituents: 0.31% Glutathione, 0.79% Tris HCl
------------------------------	--

General Info

Function	Proton-linked monocarboxylate transporter. Catalyzes the rapid transport across the plasma membrane of many monocarboxylates such as lactate, pyruvate, branched-chain oxo acids derived from leucine, valine and isoleucine, and the ketone bodies acetoacetate, beta-hydroxybutyrate and acetate.
Tissue specificity	Widely expressed in normal and in cancer cells.
Involvement in disease	Symptomatic deficiency in lactate transport Familial hyperinsulinemic hypoglycemia 7
Sequence similarities	Belongs to the major facilitator superfamily. Monocarboxylate porter (TC 2.A.1.13) family.
Cellular localization	Cell membrane.

Images



12.5% SDS-PAGE showing ab152689 stained with Coomassie Blue.

Our Abpromise to you: Quality guaranteed and expert technical support

- Replacement or refund for products not performing as stated on the datasheet
- Valid for 12 months from date of delivery
- Response to your inquiry within 24 hours

- We provide support in Chinese, English, French, German, Japanese and Spanish
- Extensive multi-media technical resources to help you
- We investigate all quality concerns to ensure our products perform to the highest standards

If the product does not perform as described on this datasheet, we will offer a refund or replacement. For full details of the Abpromise, please visit <https://www.abcam.com/abpromise> or contact our technical team.

Terms and conditions

- Guarantee only valid for products bought direct from Abcam or one of our authorized distributors