

Product datasheet

Recombinant human MEK4/MKK4 protein (Active) ab268797

[2 Images](#)

Description

| | |
|--|---|
| Product name | Recombinant human MEK4/MKK4 protein (Active) |
| Biological activity | The specific activity of ab268797 was 4.6 nmol/min/mg in a kinase assay using unactive JNK1 protein as substrate. |
| Purity | > 75 % SDS-PAGE. Affinity purified. |
| Expression system | Baculovirus infected Sf9 cells |
| Accession | <u>P45985</u> |
| Protein length | Full length protein |
| Animal free | No |
| Nature | Recombinant |
| Species | Human |
| Molecular weight information | 46 kDa by SDS-PSGE |
| Tags | His tag N-Terminus |
| Additional sequence information | NM_003010 |

Specifications

Our **Abpromise guarantee** covers the use of **ab268797** in the following tested applications.

The application notes include recommended starting dilutions; optimal dilutions/concentrations should be determined by the end user.

| | |
|---------------------|--------------------------------|
| Applications | SDS-PAGE Functional Studies |
| Form | Liquid |

Preparation and Storage

| | |
|------------------------------|--|
| Stability and Storage | Shipped on Dry Ice. Upon delivery aliquot. Store at -80°C. Avoid freeze / thaw cycle. pH: 7 Constituents: 0.79% Tris HCl, 0.87% Sodium chloride, 0.004% DTT, 0.004% EGTA, 0.003% EDTA, 0.002% PMSF, 25% Glycerol (glycerin, glycerine) |
|------------------------------|--|

This product is an active protein and may elicit a biological response in vivo, handle with caution.

General Info

Function

Dual specificity kinase that activates the JUN kinases MAPK8 (JNK1) and MAPK9 (JNK2) as well as MAPK14 (p38) but not MAPK1 (ERK2) or MAPK3 (ERK1).

Tissue specificity

Abundant expression is seen in the skeletal muscle. It is also widely expressed in other tissues.

Sequence similarities

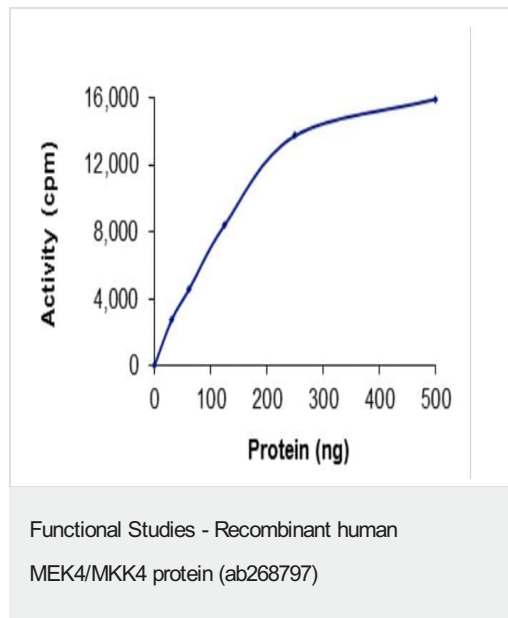
Belongs to the protein kinase superfamily. STE Ser/Thr protein kinase family. MAP kinase kinase subfamily.

Contains 1 protein kinase domain.

Post-translational modifications

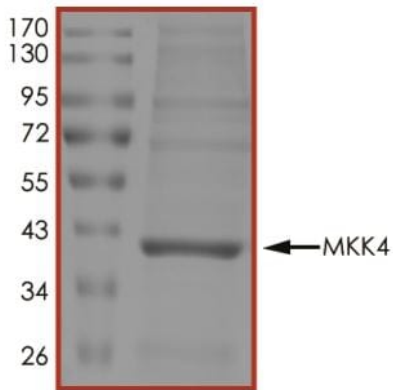
Activated by phosphorylation on Ser/Thr by MAP kinase kinase kinases.

Images



The specific activity of ab268797 was 4.6 nmol/min/mg in a kinase assay using inactive JNK1 protein as substrate.

SDS-PAGE analysis of ab268797.



SDS-PAGE - Recombinant human MEK4/MKK4 protein (ab268797)

Please note: All products are "FOR RESEARCH USE ONLY. NOT FOR USE IN DIAGNOSTIC PROCEDURES"

Our Abpromise to you: Quality guaranteed and expert technical support

- Replacement or refund for products not performing as stated on the datasheet
- Valid for 12 months from date of delivery
- Response to your inquiry within 24 hours
- We provide support in Chinese, English, French, German, Japanese and Spanish
- Extensive multi-media technical resources to help you
- We investigate all quality concerns to ensure our products perform to the highest standards

If the product does not perform as described on this datasheet, we will offer a refund or replacement. For full details of the Abpromise, please visit <https://www.abcam.com/abpromise> or contact our technical team.

Terms and conditions

- Guarantee only valid for products bought direct from Abcam or one of our authorized distributors