

Product datasheet

Recombinant Human MLD protein ab160100

[1 References](#) [1 Image](#)

Description

Product name	Recombinant Human MLD protein
Expression system	Wheat germ
Accession	<u>O15121</u>
Protein length	Full length protein
Animal free	No
Nature	Recombinant
Species	Human
Sequence	MGSRVSREDFEWVYTDQPHADRRREILAKYPEIKSLMKP DPNLWIIIMM VL TQLGAFYMKDLDWKWVIFGAYAFGSCINHSMTLAIHEIA HNAAFGNC KAMWNRWFGMFANLPIGIPYSISFKRYHMDHHRYLGADGV DVDIPTDFEG WFFCTAFRKFIVVILQPLFYAFRPLFINPKPITYLEVINTVAQ VTFDILI YYFLGIKSLVYMLAASLLGLGLHPISGHFIAEHYMFLLKGHET YSYGPLN LLTFNVGYHNEHDFPNIPGKSLPLVRKIAAEYYDNLPHYN SWIKVLYDF VMDDTISPYSRMKRHQKGMVLE
Amino acids	1 to 323
Tags	GST tag N-Terminus

Specifications

Our **Abpromise guarantee** covers the use of **ab160100** in the following tested applications.

The application notes include recommended starting dilutions; optimal dilutions/concentrations should be determined by the end user.

Applications	ELISA Western blot
Form	Liquid
Additional notes	This product was previously labelled as DEGS1.

Preparation and Storage

Stability and Storage

Shipped on dry ice. Upon delivery aliquot and store at -80°C. Avoid freeze / thaw cycles.

pH: 8.00

Constituents: 0.31% Glutathione, 0.79% Tris HCl

General Info

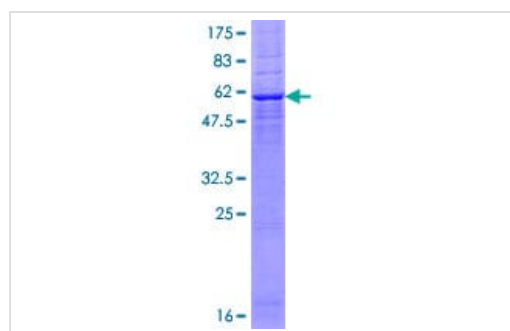
Relevance

DEGS1 is a member of the membrane fatty acid desaturase family which is responsible for inserting double bonds into specific positions in fatty acids. It contains three His containing consensus motifs that are characteristic of a group of membrane fatty acid desaturases. It has sphingolipid-delta-4-desaturase activity and converts D-erythro-sphinganine to D-erythro-sphingosine (E-sphing-4-ene).

Cellular localization

Endoplasmic reticulum and Mitochondrial

Images



SDS-PAGE - Recombinant Human MLD protein
(ab160100)

ab160100 on a 12.5% SDS-PAGE stained with Coomassie Blue.

Please note: All products are "FOR RESEARCH USE ONLY. NOT FOR USE IN DIAGNOSTIC PROCEDURES"

Our Abpromise to you: Quality guaranteed and expert technical support

- Replacement or refund for products not performing as stated on the datasheet
- Valid for 12 months from date of delivery
- Response to your inquiry within 24 hours

- We provide support in Chinese, English, French, German, Japanese and Spanish
- Extensive multi-media technical resources to help you
- We investigate all quality concerns to ensure our products perform to the highest standards

If the product does not perform as described on this datasheet, we will offer a refund or replacement. For full details of the Abpromise, please visit <https://www.abcam.com/abpromise> or contact our technical team.

Terms and conditions

- Guarantee only valid for products bought direct from Abcam or one of our authorized distributors