

Product datasheet

Recombinant human MMP3 protein (Active) ab96555

[3 References](#) [1 Image](#)

Description

Product name	Recombinant human MMP3 protein (Active)
Biological activity	<p>ab96555 activity was measured by its ability to cleave a chromogenic peptide MMP3 substrate at room temperature.</p> <p>At a MMP3 concentration of 2.5 µg/ml, 50% cleavage was achieved at an incubation time of approximately 75 minutes.</p>
Purity	<p>>= 98 % SDS-PAGE.</p> <p>>=98% HPLC analyses.</p>
Endotoxin level	< 1.000 Eu/µg
Expression system	Escherichia coli
Accession	<u>P08254</u>
Protein length	Full length protein
Animal free	No
Nature	Recombinant
Species	Human
Sequence	<p>MRTFPGIPKW RKTHLTYRIV NYTPDLPKDA VDSAVEKALK VWEEVTPLTF SRLYEGEADI MISFAVREHG DFYPFDGPGN VLAHAYAPGP GINGDAHFDDEQWTKDITG TNLFLVAAHE IGHSLGLFHS ANTEALMYPL YHSLDITRFLRSQDDINGI QSLYGPPPDSPETPLVPTEPPPEPGTPAN CDPALSFDAVSTLRGEILIFKDRHFWRKSLRKLEPELHLI SSFWPSLPSGVDAAYEVTSKDLVFIFKGNQ FWAIRGNEVRAGYPRGIHTLGFPPPTVRKIDAAISDKEKNK TYFFVEDKYWRFDEKRNSMEPGFPKQIAED FPGIDSKIDAVFEEFGFFYFTGSSQLEFD PNAKKVTHTL KSNLWLNC</p>
Predicted molecular weight	43 kDa
Amino acids	101 to 477

Specifications

Our **Abpromise guarantee** covers the use of **ab96555** in the following tested applications.

The application notes include recommended starting dilutions; optimal dilutions/concentrations should be determined by the end user.

Applications	HPLC
	SDS-PAGE
	Functional Studies
	Western blot
Form	Lyophilized

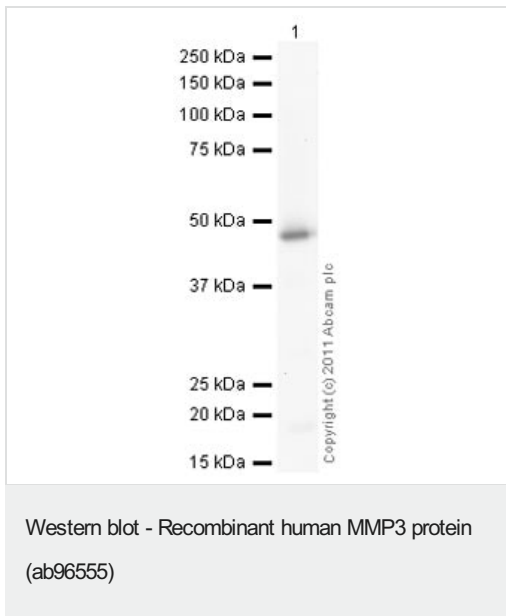
Preparation and Storage

Stability and Storage	<p>Shipped at 4°C. Store at +4°C short term (1-2 weeks). Upon delivery aliquot. Store at -20°C or -80°C. Avoid freeze / thaw cycle. For long term storage it is recommended to add a carrier protein on reconstitution (0.1% HSA or BSA). Working aliquots stored with a carrier protein are stable for at least 3 months at -20°C to -80°C..</p> <p>Constituents: 0.00111% Calcium chloride, 0.164% Sodium phosphate, 0.1% CHAPS, 0.002% EDTA disodium salt</p> <p>This product is an active protein and may elicit a biological response in vivo, handle with caution.</p>
Reconstitution	<p>Centrifuge the vial prior to opening. Reconstitute in water to a concentration of 0.5-1.0 mg/ml. Do not vortex.</p>

General Info

Function	<p>Can degrade fibronectin, laminin, gelatins of type I, III, IV, and V; collagens III, IV, X, and IX, and cartilage proteoglycans. Activates procollagenase.</p>
Sequence similarities	<p>Belongs to the peptidase M10A family.</p> <p>Contains 4 hemopexin-like domains.</p>
Domain	<p>The conserved cysteine present in the cysteine-switch motif binds the catalytic zinc ion, thus inhibiting the enzyme. The dissociation of the cysteine from the zinc ion upon the activation-peptide release activates the enzyme.</p>
Cellular localization	<p>Secreted > extracellular space > extracellular matrix.</p>

Images



Please note: All products are "FOR RESEARCH USE ONLY. NOT FOR USE IN DIAGNOSTIC PROCEDURES"

Our Abpromise to you: Quality guaranteed and expert technical support

- Replacement or refund for products not performing as stated on the datasheet
- Valid for 12 months from date of delivery
- Response to your inquiry within 24 hours
- We provide support in Chinese, English, French, German, Japanese and Spanish
- Extensive multi-media technical resources to help you
- We investigate all quality concerns to ensure our products perform to the highest standards

If the product does not perform as described on this datasheet, we will offer a refund or replacement. For full details of the Abpromise, please visit <https://www.abcam.com/abpromise> or contact our technical team.

Terms and conditions

- Guarantee only valid for products bought direct from Abcam or one of our authorized distributors