

Product datasheet

Recombinant Human MMP8 protein ab158906

1 Image

Description

Product name	Recombinant Human MMP8 protein
Expression system	Wheat germ
Protein length	Full length protein
Animal free	No
Nature	Recombinant
Species	Human
Sequence	MFSLKTLPFLLLLHVQISKAFPVSSKEKNTKTVQDYLEKFY QLPSNQYQS TRKNGTNVVEKLEKEMQRFFGLNVTGKPNEETLDMMKKP RCGVPDSSGGFM LTPGNPKWERTNLTyrIRNYTPQLSEAEVERAIKDAFELWS VASPLIFTR ISQGEADINIAFYQRDHGDNSPFDGPNGLAHAFQPGQGIG GDAHFDAEE TWTNTSANYNLFVAAHEFGHSLGLAHSSDPGALMYPNY AFRETSNYSLP QDDIDGIQAIYGLSSNIQPTGPSTPKPCDPSLTFDAITLR GEILFFKD RYFWRRHPQLQRVEMNFISLFWPSLPTGIQAAAYEDFDRDL IFLFKGNQYW ALSGYDILQGYPKDISNYGFPSSVQAIDAAVFYRSKTYFFV NDQFWRYDN QRQFMEPGYPKSISGAFPGIESKVDVAVFQQEHFFHVFSG PRYYAFDLIAQ RVTRVARGNKWLNCRYG
Amino acids	1 to 467
Tags	GST tag N-Terminus

Specifications

Our **Abpromise guarantee** covers the use of **ab158906** in the following tested applications.

The application notes include recommended starting dilutions; optimal dilutions/concentrations should be determined by the end user.

Applications	ELISA Western blot
---------------------	-----------------------

Form Liquid

Additional notes

Preparation and Storage

Stability and Storage Shipped on dry ice. Upon delivery aliquot and store at -80°C. Avoid freeze / thaw cycles.
pH: 8.00
Constituents: 0.31% Glutathione, 0.79% Tris HCl

General Info

Function Can degrade fibrillar type I, II, and III collagens.

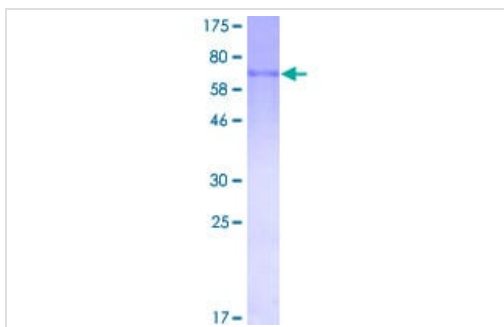
Tissue specificity Neutrophils.

Sequence similarities Belongs to the peptidase M10A family.
Contains 4 hemopexin-like domains.

Domain The conserved cysteine present in the cysteine-switch motif binds the catalytic zinc ion, thus inhibiting the enzyme. The dissociation of the cysteine from the zinc ion upon the activation-peptide release activates the enzyme.

Cellular localization Cytoplasmic granule. Secreted > extracellular space > extracellular matrix. Stored in intracellular granules.

Images



SDS-PAGE - Recombinant Human MMP8 protein
(ab158906)

ab158906 on a 12.5% SDS-PAGE stained with Coomassie Blue.

Please note: All products are "FOR RESEARCH USE ONLY. NOT FOR USE IN DIAGNOSTIC PROCEDURES"

Our Abpromise to you: Quality guaranteed and expert technical support

- Replacement or refund for products not performing as stated on the datasheet
- Valid for 12 months from date of delivery

- Response to your inquiry within 24 hours
- We provide support in Chinese, English, French, German, Japanese and Spanish
- Extensive multi-media technical resources to help you
- We investigate all quality concerns to ensure our products perform to the highest standards

If the product does not perform as described on this datasheet, we will offer a refund or replacement. For full details of the Abpromise, please visit <https://www.abcam.com/abpromise> or contact our technical team.

Terms and conditions

- Guarantee only valid for products bought direct from Abcam or one of our authorized distributors