

Product datasheet

Recombinant Human MPPB protein ab160523

1 Image

Description

Product name Recombinant Human MPPB protein

Expression system Wheat germ

Protein length Full length protein

Animal free No

Nature Recombinant

Species Human

Sequence

```
MAAAAARVVLSSAARRRLWGFSESLLRGAAGRSLYFGE
NRLRSTQAATQ
VVLNVPETRVTCLESGLRVASEDSGLSTCTVGLWIDAGS
RYENEKNNGTA
HFLEHMAFKGTKKRSQLDLELEIENMGAHLNAYSREQTV
YYAKAFSKDL
PRAVEILADIQNSTLGEAEIERERGVILREMQEVEVETNLQEV
VFDYLHAT
AYQNTALGRTLGP TENIKSISRKDLVDYITTHYKGRIVLAA
AGGVSHD
ELLDLAKFHFGDSLCTHKGEIPALPPCKFTGSEIRVRDDK
MPLAHLAIAV
EAVGWAHPDTICLMVANTLIGNWDRSFGGGMNLSSKLAQ
LTCHGNLCHSF
QSFNTSYTDTGLWGLYMVCESSVADMLHVQKEWMRL
CTSVTESEVARA
RNLLKTNMLLQLDGSTPICEDIGRQMLCYNRRIPPELARI
DAVNAETI
REVCTKYINRSPAIAAVGKPGFFSSMQKVGQVLLINSSF
```

Amino acids 1 to 490

Tags GST tag N-Terminus

Specifications

Our **Abpromise guarantee** covers the use of **ab160523** in the following tested applications.

The application notes include recommended starting dilutions; optimal dilutions/concentrations should be determined by the end user.

Applications ELISA

	Western blot
Form	Liquid
Additional notes	This product was previously labelled as PMPCB.

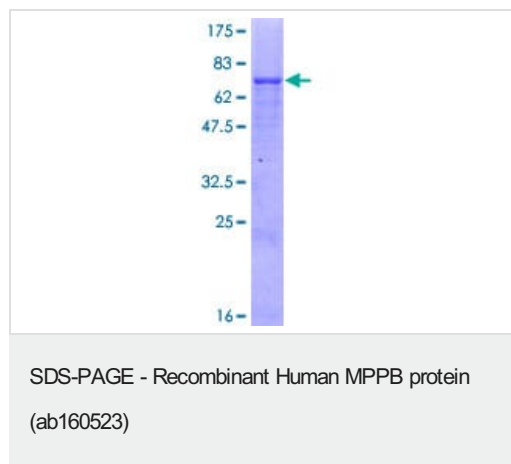
Preparation and Storage

Stability and Storage	Shipped on dry ice. Upon delivery aliquot and store at -80°C. Avoid freeze / thaw cycles. pH: 8.00 Constituents: 0.31% Glutathione, 0.79% Tris HCl
------------------------------	--

General Info

Function	Cleaves presequences (transit peptides) from mitochondrial protein precursors.
Sequence similarities	Belongs to the peptidase M16 family.
Cellular localization	Mitochondrion matrix.

Images



ab160523 on a 12.5% SDS-PAGE stained with Coomassie Blue.

Please note: All products are "FOR RESEARCH USE ONLY. NOT FOR USE IN DIAGNOSTIC PROCEDURES"

Our Abpromise to you: Quality guaranteed and expert technical support

- Replacement or refund for products not performing as stated on the datasheet
- Valid for 12 months from date of delivery
- Response to your inquiry within 24 hours
- We provide support in Chinese, English, French, German, Japanese and Spanish
- Extensive multi-media technical resources to help you
- We investigate all quality concerns to ensure our products perform to the highest standards

If the product does not perform as described on this datasheet, we will offer a refund or replacement. For full details of the Abpromise, please visit <https://www.abcam.com/abpromise> or contact our technical team.

Terms and conditions

- Guarantee only valid for products bought direct from Abcam or one of our authorized distributors