

## Product datasheet

# Recombinant Human MRM1 protein ab140719

1 Image

### Description

---

<b>Product name</b>	Recombinant Human MRM1 protein
<b>Purity</b>	> 90 % SDS-PAGE. ab140719 is purified using conventional chromatography techniques.
<b>Expression system</b>	Escherichia coli
<b>Accession</b>	<b><u>Q6IN84</u></b>
<b>Protein length</b>	Full length protein
<b>Animal free</b>	No
<b>Nature</b>	Recombinant
<b>Species</b>	Human
<b>Sequence</b>	MGSSHHHHHH SSGLVPRGSH MGSSHAARHG ERPGGEELSR LLLDDLVPST RLELLFGMTP CLLALQAARR SVARLLLQAG KAGLQ GKRAE LLRMAEARDI PVLRRRQKL DTMCRYQVHQ GVCMEVSPLR PRPWREAGEA SPGDDPQQLW LVLDGIQDPR NFGAVLRS AH FLGVDKVITS RRNSCPLTPV VSKSSAGAME VMDVFSTDDL TGFLQTKAQQ GWLVAGTVGC PSTEDPQSSE IPIMSCLEFL WERPTLLVLG NEGSGLSQEV QASCQLLLTI LPRRQLPPGL ESLNVSVAAG ILLHSICSQR KGFPTEGERR QLLQDPQEPS ARSEGLSMAQ HPGLSSGPEK ERQNEG
<b>Predicted molecular weight</b>	39 kDa including tags
<b>Amino acids</b>	21 to 353
<b>Tags</b>	His tag N-Terminus

### Specifications

---

Our **Abpromise guarantee** covers the use of **ab140719** in the following tested applications.

The application notes include recommended starting dilutions; optimal dilutions/concentrations should be determined by the end user.

<b>Applications</b>	SDS-PAGE Mass Spectrometry
<b>Mass spectrometry</b>	MALDI-TOF

**Form** Liquid

## Preparation and Storage

**Stability and Storage** Shipped at 4°C. Store at +4°C short term (1-2 weeks). Upon delivery aliquot. Store at -20°C or -80°C. Avoid freeze / thaw cycle.

pH: 8.00  
Constituents: 0.002% PMSF, 0.02% DTT, 0.32% Tris HCl, 30% Glycerol (glycerin, glycerine), 0.88% Sodium chloride

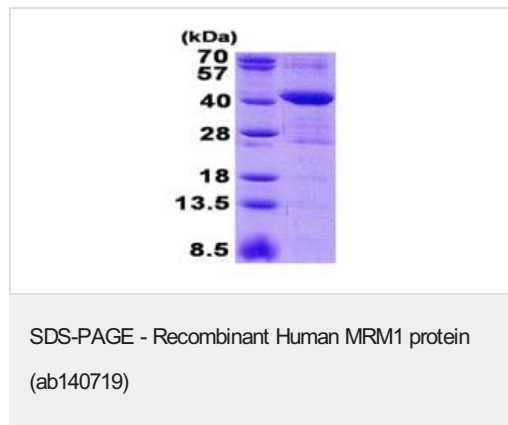
## General Info

**Function** Probably methylates the ribose of guanosine G-2270 in the peptidyl transferase center of the mitochondrial large ribosomal RNA (21S).

**Sequence similarities** Belongs to the RNA methyltransferase TrmH family.

**Cellular localization** Mitochondrion.

## Images



15% SDS-PAGE analysis of ab140719 (3µg).

**Please note:** All products are "FOR RESEARCH USE ONLY. NOT FOR USE IN DIAGNOSTIC PROCEDURES"

## Our Abpromise to you: Quality guaranteed and expert technical support

- Replacement or refund for products not performing as stated on the datasheet
- Valid for 12 months from date of delivery
- Response to your inquiry within 24 hours
- We provide support in Chinese, English, French, German, Japanese and Spanish
- Extensive multi-media technical resources to help you
- We investigate all quality concerns to ensure our products perform to the highest standards

If the product does not perform as described on this datasheet, we will offer a refund or replacement. For full details of the Abpromise, please visit <https://www.abcam.com/abpromise> or contact our technical team.

## Terms and conditions

---

- Guarantee only valid for products bought direct from Abcam or one of our authorized distributors