

Recombinant Human MS2 protein - BSA and Azide free

ab174041

1 Image

Description

Product name	Recombinant Human MS2 protein - BSA and Azide free
Purity	> 90 % SDS-PAGE.
Endotoxin level	< 1.000 Eu/µg
Expression system	HEK 293 cells
Accession	<u>P78325-1</u>
Protein length	Protein fragment
Animal free	No
Carrier free	Yes
Nature	Recombinant
Species	Human
Sequence	IAPSRPWALMEQYEVVLPWRLPGPRVRRALPSHLGLHPE RVSYVLGATGH NFTLHLRKNRDLLGSGYTETYTAANGSEVTEQPRGQDHCF YQGHVEGYPD SAASLSTCAGLRGFFQVGSDLHLIEPLDEGGEGGRHAVY QAEHLLQTAGT CGVSDDSLGSLGPRTA AVFRPRPGDSLPSRETRYVELY VVVDNAEFQML GSEAAVRHRVLEVNVHVDKLYQKLNFRVVLVGLEIWNSQ DRFHVSPDPSV TLENLLTWQARQRTRRHLHDNVQLITGVDFGTGTVGFARV SAMCSHSSGA VNQDHSKNPVGVACTMAHEMGHNLGMDHDENVQGCRC QERFEAGRCIMAG SIGSSFPRMFSDCSQAYLESFLERPQSVCLANAPDLSHL VGGPVCGNLFV ERGEQCDCGPPEDCRNRCCNSTTCQLAEGAQCAHGTC CQECKVKPAGELC RPKKDMCDLEEFCDGRHPECPEDAFQENGTP
Predicted molecular weight	72 kDa including tags

Molecular weight information	This protein has a calculated MW of 53.8 kDa, which migrates as a 130-150 kDa band in DTT-reduced SDS-PAGE due to glycosylation. Two main fragments bands are visible with apparent MW of 58-68 kDa and 35-40 kDa respectively in reduced SDS-PAGE as a result of its being prone to proteolytic cleavage.
Amino acids	17 to 497
Tags	His tag C-Terminus
Description	Recombinant Human MS2 protein (BSA and azide free)

Specifications

Our **Abpromise guarantee** covers the use of **ab174041** in the following tested applications.

The application notes include recommended starting dilutions; optimal dilutions/concentrations should be determined by the end user.

Applications	SDS-PAGE
Form	Lyophilized
Additional notes	Lyophilized from 0.22 µm filtered solution. This product is stable after storage at: -20°C to -70°C for 12 months in lyophilized state; -70°C for 3 months under sterile conditions after reconstitution.

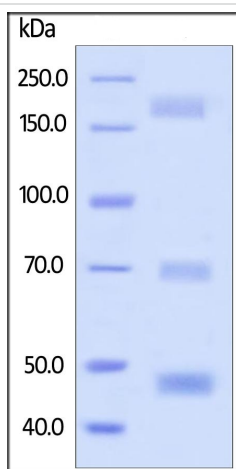
Preparation and Storage

Stability and Storage	Shipped at 4°C. Upon delivery aliquot. Store at -20°C or -80°C. Avoid freeze / thaw cycle. Please see notes section. pH: 7.4 Constituents: 0.88% Sodium chloride, 0.61% Tris, 0.11% Calcium chloride, 5% Trehalose
Reconstitution	Reconstitute with sterile deionized water to a concentration of 200 µg/ml.

General Info

Function	Possible involvement in extravasation of leukocytes.
Tissue specificity	Expressed on neutrophils and monocytes.
Sequence similarities	Contains 1 disintegrin domain. Contains 1 EGF-like domain. Contains 1 peptidase M12B domain.
Cellular localization	Membrane.

Images



SDS-PAGE - Recombinant Human MS2 protein -
BSA and Azide free (ab174041)

SDS-PAGE of reduced ab174041 stained overnight with Coomassie Blue. The protein migrates as 180-220 kDa due to glycosylation. Two main fragments are visible with apparent molecular weight of 69-73 kDa and 46-48 kDa as a result of its being prone to proteolytic cleavage.

Please note: All products are "FOR RESEARCH USE ONLY. NOT FOR USE IN DIAGNOSTIC PROCEDURES"

Our Abpromise to you: Quality guaranteed and expert technical support

- Replacement or refund for products not performing as stated on the datasheet
- Valid for 12 months from date of delivery
- Response to your inquiry within 24 hours
- We provide support in Chinese, English, French, German, Japanese and Spanish
- Extensive multi-media technical resources to help you
- We investigate all quality concerns to ensure our products perform to the highest standards

If the product does not perform as described on this datasheet, we will offer a refund or replacement. For full details of the Abpromise, please visit <https://www.abcam.com/abpromise> or contact our technical team.

Terms and conditions

- Guarantee only valid for products bought direct from Abcam or one of our authorized distributors