

Recombinant Human MSP/MST1 protein ab158921

1 Image

Description

Product name	Recombinant Human MSP/MST1 protein
Expression system	Wheat germ
Protein length	Full length protein
Animal free	No
Nature	Recombinant
Species	Human
Sequence	MGWLPLLLLLTQCLGVPGQRSPLNDFQVLRGTELQHLLH AVVPGPWQEDV ADAEECAGRCGPLMDCRAFHYNVSSHGCQLLPWTQHSP HTRLRRSGRCDL FQKKDYVRTCIMNNGVGYRGTMATTVGGLPCQAWSHKFP NDHKYTPTLRN GLEENFCRNPDGDPPGGPWCYTTDPAVRFQSCGIKSCRE AACVWCNGEETR GAVDRTESGRECQRWDLQHPHQHPFEPGKFLDQGLDD NYCRNPDGSERPW CYTTDPQIEREFCDLPRCGSEAQPRQEATTVSCFRGKGE GYRGTA GVPCQRWDAQIPHQHRFTPEKYACKDLRENFCRNPDGS EAPWCFTLRPGM RAAFCYQIRRCTDDVRPQDCYHGAGEQYRGTVSKTRKGV QCQRWSAETPH KPQFTFTSEPHAQLEENFCRNPDGDHGPWCYTMDPRT PFDYCALRRCAD DQPPSILDPPDQVQFEKCGKRVDRDQRRSKLRVVGHH PGNSPWTVSLRN RQGQHFCGGSQVKEQWILTARQCFSSCHMPLTGYEVWL GTLFQNPQHGEF SLQRVPVAKMVCGPSGSQVLLKLEKSVTLNQRVALICLP PEWYVPPGT KCEIAGWGETKGTGNDTVLNVALLNVISNQEKNIKHRGRV RESEMCTEGL LAPVGACEGDYGGPLACFTHNCWWLEGIIIPNRVCARSRW PAVFTRVSVF VDWIHKVMRLG

<b>Amino acids</b>	1 to 711
<b>Tags</b>	GST tag N-Terminus

## Specifications

---

Our **Abpromise guarantee** covers the use of **ab158921** in the following tested applications.

The application notes include recommended starting dilutions; optimal dilutions/concentrations should be determined by the end user.

<b>Applications</b>	Western blot ELISA
<b>Form</b>	Liquid
<b>Additional notes</b>	

## Preparation and Storage

---

<b>Stability and Storage</b>	Shipped on dry ice. Upon delivery aliquot and store at -80°C. Avoid freeze / thaw cycles. pH: 8.00 Constituents: 0.31% Glutathione, 0.79% Tris HCl
------------------------------	--

## General Info

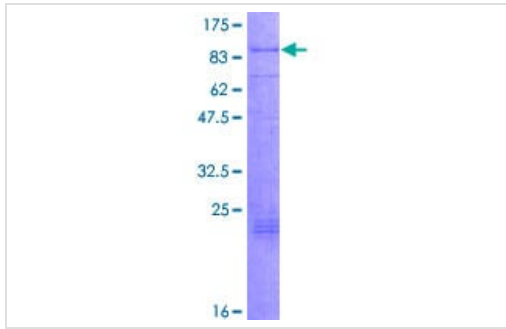
---

<b>Function</b>	Probably has no proteolytic activity, since crucial characteristic of serine proteases catalytic sites are not conserved.
<b>Sequence similarities</b>	Belongs to the peptidase S1 family. Plasminogen subfamily. Contains 4 kringle domains. Contains 1 PAN domain. Contains 1 peptidase S1 domain.
<b>Post-translational modifications</b>	May be cleaved after Arg-483, to yield two chains held together by disulfide bonds, or two separate polypeptides.
<b>Cellular localization</b>	Secreted.

---

## Images

---



ab158921 on a 12.5% SDS-PAGE stained with Coomassie Blue.

SDS-PAGE - Recombinant Human MSP/MST1  
protein (ab158921)

**Please note:** All products are "FOR RESEARCH USE ONLY. NOT FOR USE IN DIAGNOSTIC PROCEDURES"

### Our Abpromise to you: Quality guaranteed and expert technical support

---

- Replacement or refund for products not performing as stated on the datasheet
- Valid for 12 months from date of delivery
- Response to your inquiry within 24 hours
- We provide support in Chinese, English, French, German, Japanese and Spanish
- Extensive multi-media technical resources to help you
- We investigate all quality concerns to ensure our products perform to the highest standards

If the product does not perform as described on this datasheet, we will offer a refund or replacement. For full details of the Abpromise, please visit <https://www.abcam.com/abpromise> or contact our technical team.

### Terms and conditions

---

- Guarantee only valid for products bought direct from Abcam or one of our authorized distributors