

Recombinant Human NAGA protein (His tag) ab222442

1 Image

Description

Product name	Recombinant Human NAGA protein (His tag)		
Purity	> 90 % SDS-PAGE. Affinity purified		
Endotoxin level	< 1.000 Eu/µg		
Expression system	Baculovirus infected insect cells		
Accession	<b>P17050</b>		
Protein length	Full length protein		
Animal free	No		
Nature	Recombinant		
Species	Human		
Sequence	LDNGLLQTPPMGWLAWERFRCNINCDEDPKNCISEQLFM EMADRMAQDGW RDMGYTYLNIDDCWIGGRDASGRMLMPDKRFPHGIPFLAD YVHSLGLKLG IYADMGNFTCMGYPGTTLDKVVQDAQTFAEWKVDMLKLD GCFSTPEERAQ GYPKMAAALNATGRPIAFSCSWPAYEGGLPPRVNYSLLA DICNLWRNYDD IQDSWWSVLSILNWFVEHQDILQPVAGPGHWNDPDMLLIG NFGLSLEQSR AQMALWTVLAAPLLMSTDLRTISAQNMDILQNPLMIKINQD PLGIQGRRRI HKEKSLIEVYMRPLSNKASALVFFSCRTDMPYRYHSSLGQ LNFTGSVIYE AQDVYSGDIISGLRDETNTFTVIINPSGVVMWYLYPIKNLEMS QQHHHHHHH		
Predicted molecular weight	46 kDa including tags		
Amino acids	18 to 411		
Tags	His tag C-Terminus		
Additional sequence information	Full length mature chain without signal peptide.		

Specifications

Our **Abpromise guarantee** covers the use of **ab222442** in the following tested applications.

The application notes include recommended starting dilutions; optimal dilutions/concentrations should be determined by the end user.

**Applications** SDS-PAGE

**Form** Liquid

## Preparation and Storage

**Stability and Storage** Shipped at 4°C. Store at +4°C short term (1-2 weeks). Upon delivery aliquot. Store at -20°C or -80°C. Avoid freeze / thaw cycle.

pH: 7.40

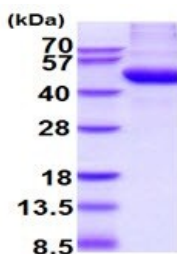
Constituents: 10% Glycerol (glycerin, glycerine), PBS

## General Info

**Relevance** NAGA encodes the lysosomal enzyme alpha N acetylgalactosaminidase, which cleaves alpha N acetylgalactosaminyl moieties from glycoconjugates. Mutations in NAGA have been identified as the cause of Schindler disease types I and II (type II also known as Kanzaki disease). Alpha galactosidase B was first found to be an isoenzyme of alpha galactosidases, but apparently it differs from alpha galactosidase A in substrate specificity and is alpha N acetylgalactosaminidase.

**Cellular localization** Lysosome

## Images



ab222442 (3 µg) was analysed by 15% SDS-PAGE.

Predicted molecular mass: 45.5 kDa

SDS-PAGE - Recombinant Human NAGA protein  
(His tag) (ab222442)

**Please note:** All products are "FOR RESEARCH USE ONLY. NOT FOR USE IN DIAGNOSTIC PROCEDURES"

## Our Abpromise to you: Quality guaranteed and expert technical support

- Replacement or refund for products not performing as stated on the datasheet
- Valid for 12 months from date of delivery
- Response to your inquiry within 24 hours

- We provide support in Chinese, English, French, German, Japanese and Spanish
- Extensive multi-media technical resources to help you
- We investigate all quality concerns to ensure our products perform to the highest standards

If the product does not perform as described on this datasheet, we will offer a refund or replacement. For full details of the Abpromise, please visit <https://www.abcam.com/abpromise> or contact our technical team.

#### **Terms and conditions**

---

- Guarantee only valid for products bought direct from Abcam or one of our authorized distributors