

Product datasheet

Recombinant Human Natriuretic peptides A protein  
ab114317

1 Image

Description

Product name	Recombinant Human Natriuretic peptides A protein		
Expression system	Wheat germ		
Accession	<u>P01160</u>		
Protein length	Full length protein		
Animal free	No		
Nature	Recombinant		
Species	Human		
Sequence	MSSFSTTTVSFLLLLAFQLLGQTRANPMYNAVSNADLMDF KNLLDHLEEK MPLEDEVVPPQVLSEPNEEAGAALSPLPEVPPWTGEVS PAQRDGGALGRG PWDSSDRSALLKSKLRALLTAPRSLRRSSCFGGRMDGIG AQSGLG CNSFR YRR		
Predicted molecular weight	43 kDa including tags		
Amino acids	1 to 153		

Specifications

Our **Abpromise guarantee** covers the use of **ab114317** in the following tested applications.  
The application notes include recommended starting dilutions; optimal dilutions/concentrations should be determined by the end user.

Applications	SDS-PAGE
	ELISA
	Western blot
Form	Liquid

Preparation and Storage

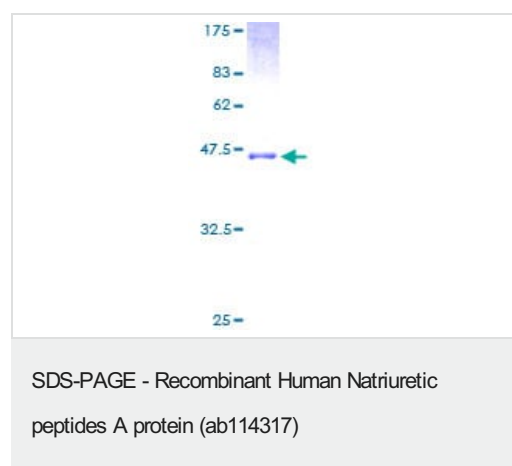
Stability and Storage	Shipped on dry ice. Upon delivery aliquot and store at -80°C. Avoid freeze / thaw cycles. pH: 8.00
-----------------------	---

Constituents: 0.3% Glutathione, 0.79% Tris HCl

## General Info

<b>Function</b>	Hormone playing a key role in cardiovascular homeostasis through regulation of natriuresis, diuresis, and vasodilation. Also plays a role in female pregnancy by promoting trophoblast invasion and spiral artery remodeling in uterus. Specifically binds and stimulates the cGMP production of the NPR1 receptor. Binds the clearance receptor NPR3.
<b>Involvement in disease</b>	Atrial standstill 2 Atrial fibrillation, familial, 6
<b>Sequence similarities</b>	Belongs to the natriuretic peptide family.
<b>Post-translational modifications</b>	Cleaved by CORIN upon secretion to produce the functional hormone. Atrial natriuretic factor: Cleaved by MME. The cleavage initiates degradation of the factor and thereby regulate its activity.
<b>Cellular localization</b>	Secreted.

## Images



SDS-PAGE analysis of ab114317 on a 12.5% gel stained with Coomassie Blue.

**Please note:** All products are "FOR RESEARCH USE ONLY. NOT FOR USE IN DIAGNOSTIC PROCEDURES"

## Our Abpromise to you: Quality guaranteed and expert technical support

- Replacement or refund for products not performing as stated on the datasheet
- Valid for 12 months from date of delivery
- Response to your inquiry within 24 hours
- We provide support in Chinese, English, French, German, Japanese and Spanish
- Extensive multi-media technical resources to help you
- We investigate all quality concerns to ensure our products perform to the highest standards

If the product does not perform as described on this datasheet, we will offer a refund or replacement. For full details of the Abpromise, please visit <https://www.abcam.com/abpromise> or contact our technical team.

## Terms and conditions

---

- Guarantee only valid for products bought direct from Abcam or one of our authorized distributors