

## Product datasheet

# Recombinant Human NCE2/UBE2F protein ab167934

1 Image

### Description

<b>Product name</b>	Recombinant Human NCE2/UBE2F protein
<b>Purity</b>	> 95 % Densitometry.
<b>Expression system</b>	Escherichia coli
<b>Accession</b>	<u><a href="#">Q969M7</a></u>
<b>Protein length</b>	Full length protein
<b>Animal free</b>	No
<b>Nature</b>	Recombinant
<b>Species</b>	Human
<b>Sequence</b>	MLTLASKLKRDDGLKGSRTAATASDSTRRVSVRDKLLVK EVAELEANLPC TCKVHFDPNKLHCFQLTVTPDEGYQGGKFQFETEPD AYNMVPPKVKC LTKIWHPNITETGEICLSLLREHSIDGTGWAPTRTLKDVVW GLNSLFTDL LNFDDPLNIEAAEHHLRDKEDFRNKVDDYIKRYAR
<b>Predicted molecular weight</b>	24 kDa including tags
<b>Amino acids</b>	1 to 185
<b>Tags</b>	His tag N-Terminus

### Specifications

Our **Abpromise guarantee** covers the use of **ab167934** in the following tested applications.

The application notes include recommended starting dilutions; optimal dilutions/concentrations should be determined by the end user.

<b>Applications</b>	Western blot SDS-PAGE
<b>Form</b>	Liquid
<b>Additional notes</b>	This product was previously labelled as NCE2

### Preparation and Storage

## Preparation and Storage

### Stability and Storage

Shipped on dry ice. Upon delivery aliquot and store at -80°C. Avoid freeze / thaw cycles.

pH: 7.00

Preservative: 1.02% Imidazole

Constituents: 0.002% PMSF, 0.82% Sodium phosphate, 0.004% DTT, 25% Glycerol (glycerin, glycerine), 1.75% Sodium chloride

## General Info

### Function

Accepts the ubiquitin-like protein NEDD8 from the UBA3-NAE1 E1 complex and catalyzes its covalent attachment to other proteins. The specific interaction with the E3 ubiquitin ligase RBX2, but not RBX1, suggests that the RBX2-UBE2F complex neddylates specific target proteins, such as CUL5.

### Tissue specificity

Widely expressed (at protein level).

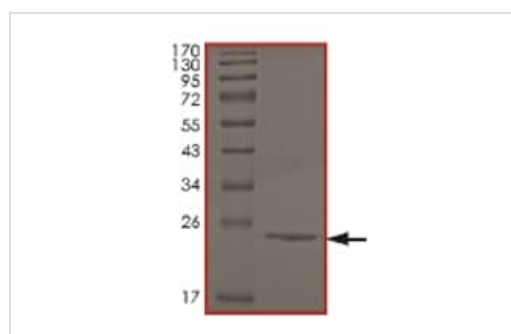
### Pathway

Protein modification; protein neddylation.

### Sequence similarities

Belongs to the ubiquitin-conjugating enzyme family. UBE2F subfamily.

## Images



SDS-PAGE analysis of ab167934.

SDS-PAGE - Recombinant Human NCE2/UBE2F protein (ab167934)

**Please note:** All products are "FOR RESEARCH USE ONLY. NOT FOR USE IN DIAGNOSTIC PROCEDURES"

## Our Abpromise to you: Quality guaranteed and expert technical support

- Replacement or refund for products not performing as stated on the datasheet
- Valid for 12 months from date of delivery
- Response to your inquiry within 24 hours
- We provide support in Chinese, English, French, German, Japanese and Spanish
- Extensive multi-media technical resources to help you
- We investigate all quality concerns to ensure our products perform to the highest standards

If the product does not perform as described on this datasheet, we will offer a refund or replacement. For full details of the Abpromise,

please visit <https://www.abcam.com/abpromise> or contact our technical team.

## **Terms and conditions**

---

- Guarantee only valid for products bought direct from Abcam or one of our authorized distributors