

Recombinant Human NCR1 protein ab191681

1 Image

Description	
Product name	Recombinant Human NCR1 protein
Purity	> 95 % SDS-PAGE.
Endotoxin level	< 1.000 Eu/µg
Expression system	HEK 293 cells
Accession	<b><u>O76036-6</u></b>
Protein length	Protein fragment
Animal free	No
Nature	Recombinant
Species	Human
Sequence	QQQTLPKPFIWAEPHF MVPKEKQVTICCQGNYGAVEYQL HFEGSLFAVDR PKPPERINKVKFYIPDMNSRMAGQYSCIYRVGELWSEPSN LLDLVVTEMY DTPTLSVHPGPEVISGEKVTFYCRLDTATSMFLLKEGRS SHVQRGYGKV QAEFPLGPVTTAHRGTYRCFGSYNNHAWSPSEPVKLLV TGDIENTSLAP EDPTFPDWTGYLLTTETGLQKDHALWDHTAQN
Predicted molecular weight	53 kDa
Amino acids	22 to 254
Additional sequence information	Accession AAH64806 from the Extracellular domain of Isoform 6, fused to a Fc fragment of human IgG1 at the C-terminus.

Specifications	
Our <b><u>Abpromise guarantee</u></b> covers the use of <b>ab191681</b> in the following tested applications.	
The application notes include recommended starting dilutions; optimal dilutions/concentrations should be determined by the end user.	
Applications	SDS-PAGE
Form	Lyophilized
Additional notes	No activity loss was observed after storage at:

- 4-8°C for 1 year in lyophilized state
- 70°C for 3 months under sterile conditions after reconstitution.

## Preparation and Storage

### Stability and Storage

Shipped at 4°C. Store at 4°C prior to reconstitution. Store at -80°C. Avoid freeze / thaw cycle. For long term storage it is recommended to add a carrier protein on reconstitution (0.1% HSA or BSA). Please see notes section.

pH: 7.4

Constituents: 0.61% Tris, 0.75% Glycine, Sodium chloride, L-Arginine, 5% Trehalose

ab191681 was lyophilized from 0.22 µm filtered solution.

### Reconstitution

Reconstitute with sterile deionized water to a concentration of 400 µg/ml.

## General Info

### Function

Cytotoxicity-activating receptor that may contribute to the increased efficiency of activated natural killer (NK) cells to mediate tumor cell lysis.

### Tissue specificity

Selectively expressed by both resting and activated NK cells.

### Sequence similarities

Belongs to the natural cytotoxicity receptor (NCR) family.  
Contains 2 Ig-like (immunoglobulin-like) domains.

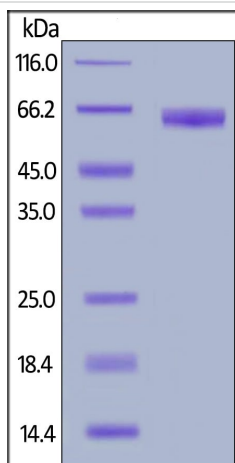
### Post-translational modifications

N-glycosylated.  
O-glycosylated.

### Cellular localization

Cell membrane.

## Images



SDS-PAGE - Recombinant Human NCR1 protein  
(ab191681)

DTT-reduced SDS-PAGE analysis of ab191681 stained overnight with Coomassie Blue. DTT-reduced protein migrates at 53-75 kDa due to glycosylation.

**Please note:** All products are "FOR RESEARCH USE ONLY. NOT FOR USE IN DIAGNOSTIC PROCEDURES"

### **Our Abpromise to you: Quality guaranteed and expert technical support**

---

- Replacement or refund for products not performing as stated on the datasheet
- Valid for 12 months from date of delivery
- Response to your inquiry within 24 hours
  
- We provide support in Chinese, English, French, German, Japanese and Spanish
- Extensive multi-media technical resources to help you
- We investigate all quality concerns to ensure our products perform to the highest standards

If the product does not perform as described on this datasheet, we will offer a refund or replacement. For full details of the Abpromise, please visit <https://www.abcam.com/abpromise> or contact our technical team.

### **Terms and conditions**

---

- Guarantee only valid for products bought direct from Abcam or one of our authorized distributors